

# BRAUN

*design collection*

**WK 600**



*Impressions*

Type 3214  
Modèle 3214  
Modelo 3214

[www.braun.com/register](http://www.braun.com/register)

**English** Thank you for purchasing a Braun product.  
We hope you are completely satisfied with  
your new Braun Impressions kettle.  
If you have any questions, please call:  
US residents 1-800-BRAUN-11  
1-800-272-8611  
Canadian residents 1-800-387-6657

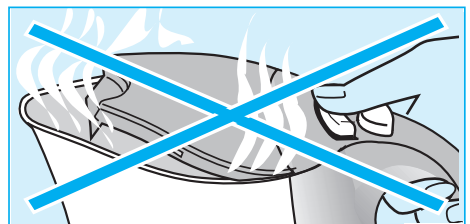
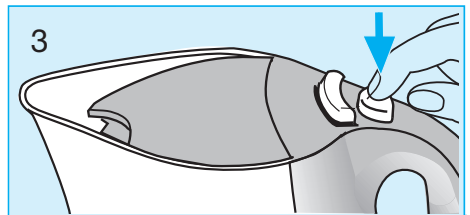
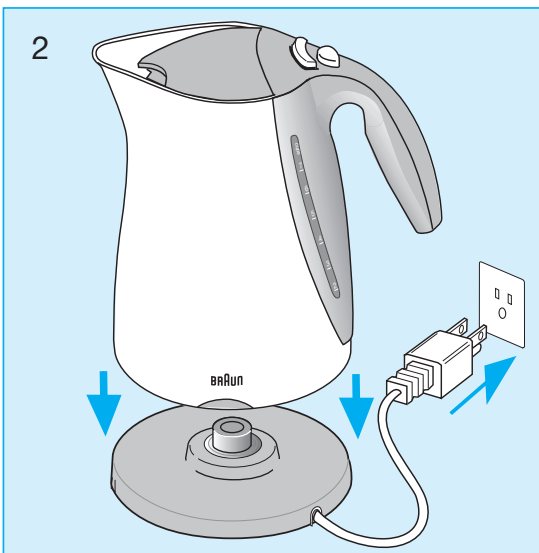
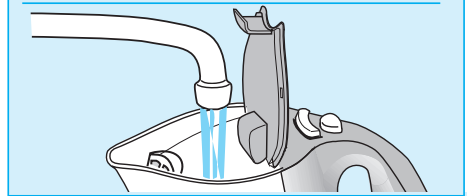
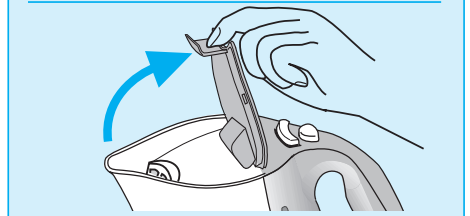
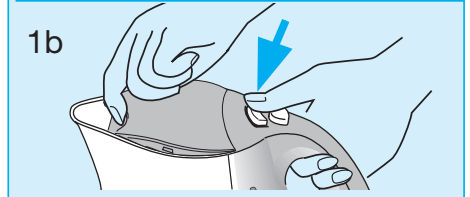
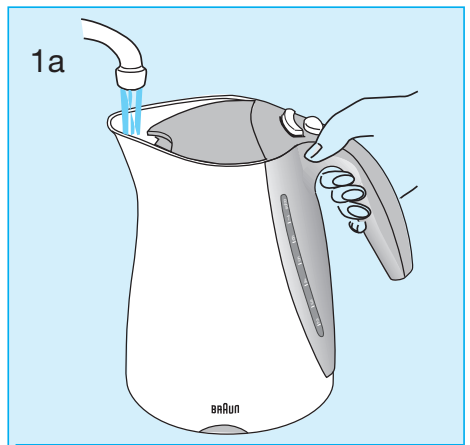
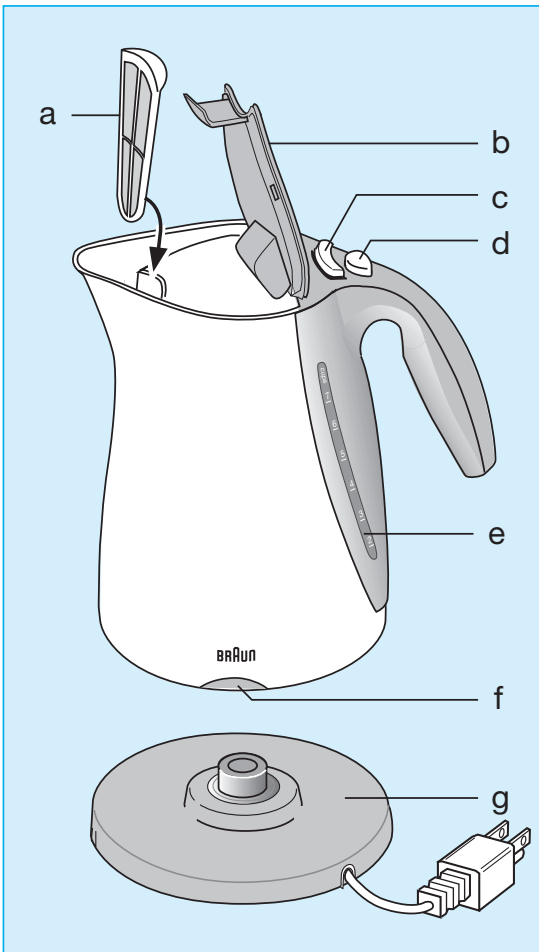
**For household use only**

**Français** Merci d'avoir fait l'achat d'un produit Braun.  
Nous espérons que vous serez pleinement  
satisfaite de votre nouvelle bouilloire Braun.  
Si vous avez des questions, veuillez appeler  
Braun Canada : 1-800-387-6657

**Pour usage ménager  
seulement**

**Español** Gracias por haber comprado un producto  
Braun.  
Esperamos que Ud. completamente  
satisfecha con su nuevo hervidor de agua  
Braun.  
Si Ud. tiene alguna duda, por favor, llame al:  
México: 01 (800) 508-5800  
Venezuela: 0 800 44 55 388

**Para uso doméstico  
unicamente**



# IMPORTANT SAFEGUARDS

When using electrical appliances, basic safety precautions should always be followed including the following:

1. Read all instructions.
2. Do not touch hot surfaces. Use handles or knobs.
3. To protect against electric shock, do not immerse cord, plug, base or appliance in water or other liquid.
4. Close supervision is necessary when any appliance is used by or near children.
5. Unplug from outlet when not in use and before cleaning.  
Allow to cool before putting on or taking off parts, and before cleaning.
6. Do not operate any appliance with a damaged cord or plug or after the appliance malfunctions, or has been damaged in any manner. Return appliance to an authorized service facility for examination, repair or adjustment.
7. The use of an accessory not recommended for use with this appliance may cause injury.
8. Do not use outdoors.
9. Do not let cord hang over the edge of table or counter, or touch hot surfaces.
10. Do not place on or near a hot gas or electric burner, or in a heated oven.
11. Do not use the kettle other than for heating water.
12. Scalding may occur if the lid is opened during the boiling cycle.
13. Water will remain hot for some time after boiling and can present a scalding hazard.
14. Ensure that the kettle is properly located on the base before switching it on.
15. Use the kettle only with the base supplied.
16. Remove the kettle from its base before filling or pouring.
17. Do not attempt to remove the kettle from its base until it is switched off, either manually or automatically.

---

## SAVE THESE INSTRUCTIONS

---

# SHORT CORD INSTRUCTIONS

A short power supply cord is provided to reduce risks resulting from becoming entangled in or tripping over a longer cord. Longer detachable power supply cords or extension cords are available and may be used if care is exercised in their use.

If an extension cord is used follow these guidelines:

- A. The marked electrical rating should be at least as great as the electrical rating of the appliance.
- B. If the appliance is of the grounded type, the extension cord should be a grounding type 3-wire cord.
- C. The longer cord should be arranged so that it will not drape over the countertop or tabletop where it can be pulled on by children or tripped over.

---

## INTENDED FOR HOUSEHOLD USE ONLY

---

Our products are engineered to meet the highest standards of quality, functionality and design. We hope you enjoy your new Braun appliance.

## Important

- Read all instructions thoroughly before using this product.
- Make sure that your voltage corresponds to the voltage printed on the bottom of the kettle. The kettle may only be operated on the base (g) supplied.
- Keep the appliance out of reach of children.
- Operate the kettle on a dry, level surface only.
- The cord length may be reduced by winding it into the cord channel on the bottom of the base.
- The base, the kettle and the cord must never be in contact with hot surfaces (e.g. stove burners).
- **Caution:** During and after operation, never touch the metal surfaces of the kettle as they will get hot and may cause burns and scalds. Only use the handle to carry it. Always hold the kettle in an upright position, to avoid boiling water spilling out.
- In the event the kettle is switched on when empty, the overheating protection will immediately shut the kettle off. If this happens, allow the kettle to cool down for 10 minutes before filling it with water.
- **Caution:** Do not fill the kettle above the «7 cups» mark! Water could boil over and result in scalding.
- Do not open the lid while water is boiling.
- Never leave the appliance unsupervised when switched on.
- Check the cord regularly for possible damage.
- Braun electric appliances meet applicable safety standards. Repairs on electric appliances must only be done by authorized service personnel. Faulty or unqualified repair work may cause accidents or injury to the user.

## Description

- a Anti-calcification filter (removable)
  - b Lid
  - c Lid release switch
  - d On/off switch
  - e Water level indicator
  - f Power indicator light
  - g Base with cord storage
- Maximum capacity: 1.7 l / 56 oz / 7 cups of water

## Before first use

Bring 1.7 l / 56 oz / 7 cups of water to a boil. Discard the boiled water and repeat this process.

## Setting into operation

- 1a Fill the kettle through the spout with the lid closed, or:

- 1b Press the lid release switch (c) to open the lid, fill with water and close the lid again (the kettle will not operate with the lid open).
- 2 Place the kettle on the base and plug the base into an electrical outlet.
- 3 Press the on/off switch (d) and the power indicator will come on (do not open the lid once the kettle is switched on).
- 4 When the water has boiled, the kettle will automatically switch off provided the anti-calcification filter is in place. Failure to have this filter in place will mean a delay in the kettle shutting off automatically upon boiling.  
You may also stop the kettle from boiling at any time by pressing the on/off switch (d).

## Automatic shut-off feature

The kettle switches off automatically if ...

- the water has boiled,
- it contains no water (if accidentally switched on),
- the lid is opened,
- it is removed from the base.

## Cleaning

- Always unplug the appliance and allow cooling down before cleaning.
- Never clean the appliance under running water, nor immerse it in water. Clean the exterior surfaces of the kettle with a damp cloth only. Do not use steel wool or abrasive cleaners. Small amounts of dishwashing liquids may be used. Never use any solvents such as alcohol, gasoline or benzene.
- The anti-calcification filter can be cleaned with a soft brush; do not use a metal brush. The anti-calcification filter is dishwasher-safe.

## Descaling

- In order to extend the lifetime of the kettle, it should be descaled regularly.
- Boil 0.8 l / 27 oz / 3 cups of water in the kettle.
- After boiling, add 0.4 l / 14 oz / 1 1/2 cups of white vinegar to the boiled water and leave this solution to soak in the kettle overnight.
- Important: Do not boil this solution as it will overflow and could cause scalding.
- Empty the kettle and rinse the inside thoroughly with clean, fresh water.  
Then fill the kettle with clean water and boil it.
- After the kettle has boiled, empty it and rinse it out again with clean water.
- If the kettle still contains scale, repeat this procedure.
- To remove any scale from the anti-calcification filter, soak it in diluted vinegar.

Subject to change without notice.

---

# FOR USA ONLY

---

## How to obtain service in the USA

Should your Braun product require service, please call 1-800-BRAUN 11 (800-272-8611) to be referred to the authorized Braun Service Center closest to you.

*To obtain service:*

- A. Take the product in to the authorized Braun Service Center of your choice or,
- B. Ship the product to the authorized Braun Service Center of your choice.  
Pack the product well. Ship the product prepaid and insured (recommended). Include a copy of your proof of purchase to verify warranty coverage, if applicable.

## Limited Warranty

Braun warrants this Braun appliance to be free of defects in material and workmanship for a period of one year from the date of original purchase at retail. If the appliance exhibits such a defect, Braun will, at its option, repair or replace it without cost for parts and labor. The product must be carried in or shipped, prepaid and insured (recommended), to an authorized Braun Service Center. Proof of date of original purchase is required.

The cost to ship the product to an authorized Service Center is the responsibility of the consumer, the cost to return the product to the consumer is the responsibility of Braun.

This warranty does not cover finishes, normal wear, nor does it cover damage resulting from accident, misuse, dirt, water, tampering, unreasonable use, service performed or attempted by unauthorized service centers, failure to provide reasonable and necessary maintenance, including recharging, or units that have been modified or used for commercial purposes.

ALL IMPLIED WARRANTIES, INCLUDING ANY IMPLIED WARRANTY OF MERCHANTABILITY OR FITNESS FOR ANY PARTICULAR PURPOSE, ARE LIMITED IN DURATION TO ONE YEAR FROM DATE OF ORIGINAL PURCHASE.

IN NO EVENT WILL BRAUN BE RESPONSIBLE FOR CONSEQUENTIAL DAMAGES RESULTING FROM THE USE OF THIS PRODUCT.

Some states do not allow the exclusion or limitation of incidental or consequential damages, so the above limitation may not apply to you.

This warranty gives you specific legal rights, and you may have other legal rights which vary from state to state.

---

# FOR CANADA ONLY

---

## How to obtain service in Canada

Should your Braun product require service, please call 1-800-387-6657 to be referred to the authorized Braun Service Center closest to you.

*To obtain service:*

- A. Carry the product in to the authorized Braun Service Center of your choice or,
- B. Ship the product to the authorized Braun Service Center of your choice.  
Pack the product well. Ship the product prepaid and insured (recommended). Include a copy of your proof of purchase to verify warranty coverage, if applicable.

## Limited 1-year Warranty

In the event a Braun appliance fails to function within the specified warranty period because of defects in material or workmanship, and the consumer returns the unit to an authorized service center, Braun Canada will, at its option either repair or replace the unit without additional charge to the consumer. This warranty does not cover any product which has been damaged by dropping, tampering, servicing performed or attempted by un-authorized service agencies, misuse or abuse. This warranty excludes units which have been modified or used for commercial purposes.

To the extent allowed by law, Braun Canada shall not be responsible for loss of the product, loss of time, inconvenience, commercial loss, special or consequential damages.

The provisions of this warranty are in addition to and not a modification of or subtraction from the statutory warranties and other rights and remedies contained in applicable provincial legislation.