

BRAUN

FreeControl

1775



Type 5729

www.braun.com/register



Braun Infoline

Deutsch 6, 48, 55

English 9, 48, 55

Français 12, 49, 55

Español 15, 49, 55

Português 18, 50, 55

Italiano 21, 51, 55

Nederlands 24, 51, 55

Dansk 27, 52, 55

Norsk 30, 52, 55

Svenska 33, 53, 55

Suomi 36, 53, 55

Türkçe 39, 55

Ελληνικά 42, 54, 55

(D) Haben Sie Fragen zu diesem Produkt?

(A) Rufen Sie an (gebührenfrei):
00 800 27 28 64 63
00 800 BRAUNINFOLINE

(CH) **08 44 - 88 40 10**

(E) Servicio al consumidor para España:
9 01-11 61 84

(P) Serviço ao Consumidor para Portugal:
808 20 00 33

(I) Servizio consumatori:
(02) 6 67 86 23

(NL) Heeft u vragen over dit produkt?
Bel Braun Consumenten-infolijn:
0 800-445 53 88

(B) Vous avez des questions sur ce produit ?
Appelez Braun Belgique
(02) 711 92 11

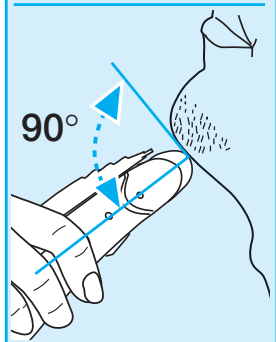
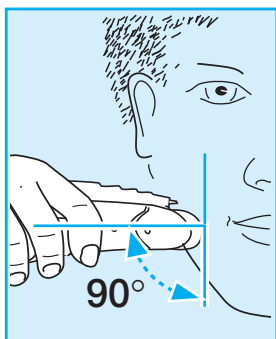
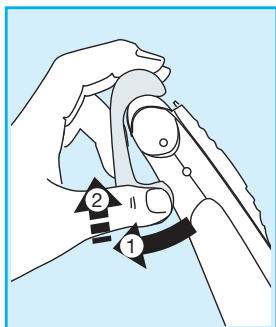
(DK) Har du spørgsmål om produktet? Så ring
70 15 00 13

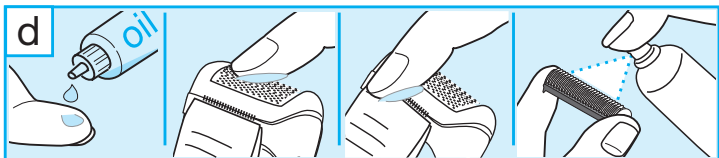
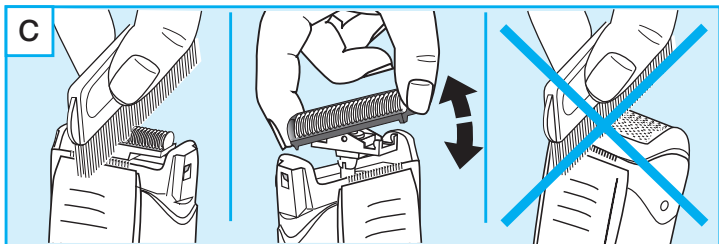
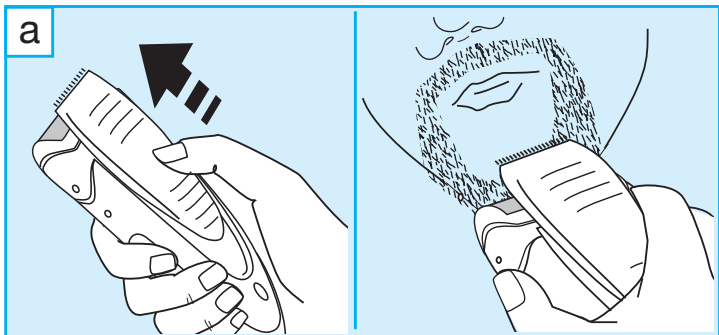
(N) Spørsmål om dette produktet? Ring
22 63 00 93

(S) Frågor om apparaten? Ring Kundservice
020 - 21 33 21

(FIN) Onko Sinulla kysyttävää tuotteesta? Soita
0203 77877

(TR) Müşteri Hizmetleri Merkezi:
0212 - 473 75 85





English

Our products are designed to meet the highest standards of quality, functionality and design. We hope you entirely enjoy your new Braun shaver.

Warning

Your shaver is provided with a special cord set with integrated Safety Extra Low Voltage power supply. Do not exchange or manipulate any part of it. Otherwise there is a risk of electric shock.

Description

- 1 Foil protection cap
- 2 Shaver foil
- 3 Cutter block
- 4 Long hair trimmer
- 5 Charging light
- 6 On/off switch
- 7 Special cord set

Charging

The best environmental temperature for charging is between 15 °C and 35 °C.

- Using the special cord set, connect the shaver to an electrical outlet with the motor switched off.
- When charging for the first time, leave the shaver to charge continuously for 4 hours. The charging light (5) shows that the shaver is being charged. When the battery is fully charged, the charging light intermittently blinks on and off. This indicates that the battery maintains its full capacity.
- A full charge provides up to 30 minutes of cordless shaving time depending on your beard growth.
- Once the shaver is completely charged, discharge the shaver through normal use. Then recharge to full capacity. Subsequent charges will take about 1 hour.
- Maximum battery capacity will only be reached after several charging/ discharging cycles.
- If the rechargeable batteries are discharged, you may also shave by connecting the shaver to an electrical outlet via the special cord set.

Shaving

Remove the foil protection cap (1). Activate the on/off switch (6). The floating foil frame automatically adapts to your skin surface for a close, smooth shave.

For pre-shaving after a few days of not having shaved, use the long hair trimmer (4) to pre-cut long hairs. For a close, smooth shave, finish with the foil.

Trimming

Push out the long hair trimmer (a). It allows controlled trimming of moustache and sideburns. It evenly cuts and trims larger areas: ideal for shaping sideburns, moustaches and partial short beards.

Frequent use of the long hair trimmer may reduce the battery capacity.

Tips for the perfect shave

- We recommend that you shave before washing, as the skin tends to be slightly swollen after washing.
- Hold the shaver at right angles (90°) to the skin. Stretch the skin and shave against the direction of beard growth.
- To maintain 100% shaving performance, replace your foil and cutter block at least every 18 months or when worn.

Cleaning



This appliance is suitable for cleaning under an open water tap.

Warning: Detach the hand-held part from the power supply before cleaning it in water.

Regular cleaning ensures better shaving performance. Rinsing the shaving head after each shave under running water is an easy and fast way to keep it clean:

- Switch the shaver on (cordless) and rinse the shaving head under hot running water (b). A natural based soap may also be used provided it contains no particles or abrasive substances. Rinse off all foam and let the shaver run for a few more seconds.
- Next, switch off the shaver, remove the shaver foil and the cutter block. Then leave the disassembled shaving parts to dry.

Alternatively, you may clean the shaver using the brush provided (c):

- Switch off the shaver. Remove the shaver foil.
- Using the brush, clean the cutter block and the inner area of the shaver head. However, do not clean the shaver foil with the brush as this may damage the foil.

Keeping your shaver in top shape

About every four weeks, clean the cutter block with Braun cleaning agents. Put a drop of light machine oil onto the long hair trimmer and the shaver foil (d).

Replacing the shaving parts

To maintain 100% shaving performance, replace your foil and cutter block at least every 18 months or when worn. Change both parts at the same time for a closer shave with less skin irritation.
(Shaver foil and cutter block: 1000 series)

Preserving the batteries

In order to maintain the optimum capacity of the rechargeable batteries, the shaver has to be fully discharged (by shaving) every 6 months approximately. Then recharge the shaver to full capacity. Do not expose the shaver to temperatures higher than 50 °C for extended periods of time.

Environmental notice

This appliance is provided with nickel-hydride rechargeable batteries. To protect the environment, do not dispose of this appliance in the household waste at the end of its useful life. Open the housing as shown on page 46, remove and dispose of the batteries at your retail store or at appropriate collection sites according to national or local regulations.

Subject to change without notice.

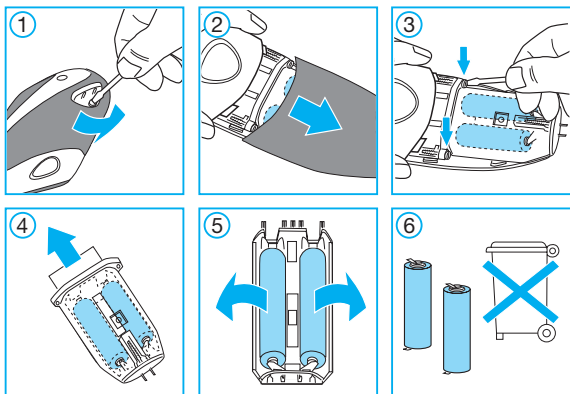
This product conforms to the European Directives EMC 89/336/EEC and Low Voltage 73/23/EEC.



Electric specifications see printing on the special cord set.

At the end of the product's useful life, please dispose of it at appropriate collection points provided in your country.





Deutsch

Akku-Entsorgung am Ende der Lebensdauer des Gerätes

English

Battery removal at the end of the product's useful life

Français

Retrait des batteries à la fin de la durée de vie du produit

Español

Extracción de la pila al finalizar la vida útil del producto

Português

Remoção da bateria no fim da vida útil do produto

Italiano

Eliminazione delle batterie alla fine del ciclo di vita del prodotto

Nederlands

Het verwijderen van batterijen aan het eind van de nuttige levensduur van het apparaat

Deutsch

Garantie

Als Hersteller übernehmen wir für dieses Gerät – nach Wahl des Käufers zusätzlich zu den gesetzlichen Gewährleistungsansprüchen gegen den Verkäufer – eine Garantie von 2 Jahren ab Kaufdatum. Innerhalb dieser Garantiezeit beseitigen wir nach unserer Wahl durch Reparatur oder Austausch des Gerätes unentgeltlich alle Mängel, die auf Material- oder Herstellungsfehlern beruhen. Die Garantie kann in allen Ländern in Anspruch genommen werden, in denen dieses Braun Gerät von uns autorisiert verkauft wird.

Von der Garantie sind ausgenommen: Schäden durch unsachgemäßen Gebrauch (Knickstellen an der Scherfolie, Bruch), normaler Verschleiß (z.B. Scherfolie oder Klingenblock) sowie Mängel, die den Wert oder die Gebrauchstauglichkeit des Gerätes nur unerheblich beeinflussen. Bei Eingriffen durch nicht von uns autorisierte Braun Kundendienstpartner sowie bei Verwendung anderer als Original Braun Ersatzteile erlischt die Garantie.

Im Garantiefall senden Sie das Gerät mit Kaufbeleg bitte an einen autorisierten Braun Kundendienstpartner. Die Anschrift für Deutschland können Sie kostenlos unter 00800/27 28 64 63 erfragen.

English

Guarantee

We grant 2 years guarantee on the product commencing on the date of purchase. Within the guarantee period we will eliminate, free of charge, any defects in the appliance resulting from faults in materials or workmanship, either by repairing or replacing the complete appliance as we may choose.

This guarantee extends to every country where this appliance is supplied by Braun or its appointed distributor.

This guarantee does not cover: damage due to improper use, normal wear and tear (e.g. shaver foil or cutter block) as well as defects that have a negligible effect on the value or operation of the appliance. The guarantee becomes void if repairs are undertaken by unauthorised persons and if original Braun parts are not used.

To obtain service within the guarantee period, hand in or send the complete appliance with your sales receipt to an authorised Braun Customer Service Centre.

For UK only:

This guarantee in no way affects your rights under statutory law.