

BRAUN

4775



TriControl

www.braun.com/register

Type 5713

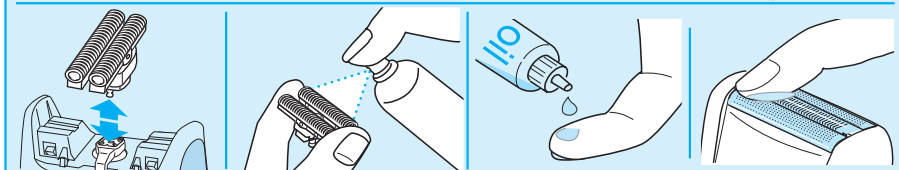
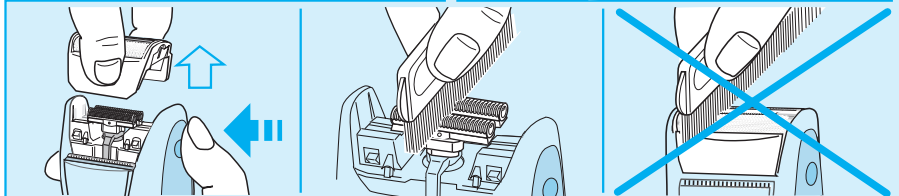
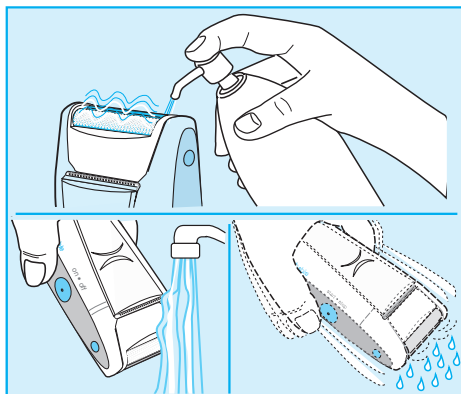
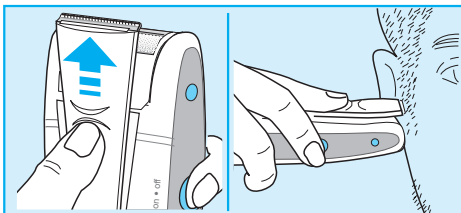
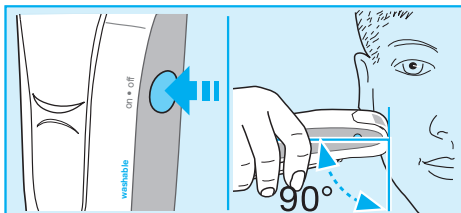
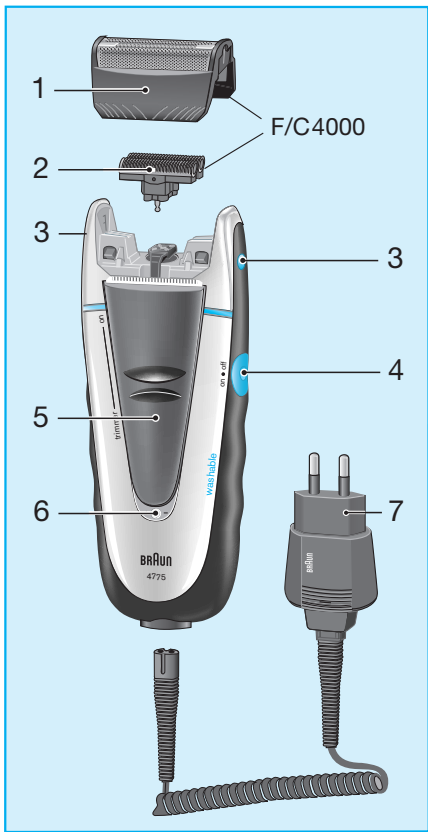
5-713-450/00/X-03/G2
D/G/B/F/E/P/I/NL/DK/N/S/FIN/TR/GR



Braun Infoline

Deutsch	4, 33, 37
English	6, 33, 37
Français	8, 33, 37
Español	10, 34, 37
Português	12, 34, 37
Italiano	14, 34, 37
Nederlands	16, 35, 37
Dansk	18, 35, 37
Norsk	20, 35, 37
Svenska	22, 36, 37
Suomi	24, 36, 37
Türkçe	26, 37
Ελληνικά	28, 36, 37

- (D)** Haben Sie Fragen zu diesem Produkt?
- (A)** Rufen Sie an (gebührenfrei):
00 800 27 28 64 63
00 800 BRAUNINFOLINE
- (CH)** **08 44 - 88 40 10**
- (E)** Servicio al consumidor para España:
9 01-11 61 84
- (P)** Serviço ao Consumidor para Portugal:
808 20 00 33
- (I)** Servizio consumatori:
(02) 6 67 86 23
- (NL)** Heeft u vragen over dit produkt?
Bel Braun Consumenten-infolijn:
(070) 4 13 16 58
- (B)** Vous avez des questions sur ce produit ?
Appelez Braun Belgique
(02) 711 92 11
- (DK)** Har du spørgsmål om produktet? Så ring
70 15 00 13
- (N)** Spørsmål om dette produktet? Ring
88 02 55 03
- (S)** Frågor om apparaten? Ring Kundservice
020 - 21 33 21
- (FIN)** Onko Sinulla kysyttävää tuotteesta? Soita
0203 77877
- (TR)** Müşteri Hizmetleri Merkezi:
0212 - 473 75 85



English

Our products are designed to meet the highest standards of quality, functionality and design. We hope you enjoy your new Braun shaver.

Warning

Your shaver is provided with a special cord set with integrated Safety Extra Low Voltage power supply. Therefore you must not exchange or manipulate any part of it. Otherwise there is a risk of electric shock.

Description

- 1 Shaver foil
- 2 Cutter block
- 3 Release button
- 4 «on/off» switch
- 5 Long hair trimmer
- 6 Dual function light
green: charging
red: low-charge
- 7 Special cord set

Charging

The best environmental temperature for charging is between 15 °C and 35 °C.

- Using the special cord set, connect the shaver to an electrical outlet with the motor switched off.
- When charging for the first time, leave the shaver to charge continuously for 4 hours. Subsequent charges will take about 1 hour.
- As soon as you start charging the shaver, the green charging light (6) comes on. When the batteries are fully charged, the green light goes off. If it comes on again while connected to an electrical outlet, this indicates the shaver is recharging to maintain its full capacity.
- Once the shaver is completely charged, discharge the shaver through normal use. Then recharge to full capacity.
- A full charge will give up to 40 minutes of

cordless shaving time depending on your beard growth. However, the maximum battery capacity will only be reached after several charging/discharging cycles.

- When the batteries are running low, the dual function light (6) turns red (provided the shaver is switched on). The red light indicates the shaver capacity has dropped below 20%, which is sufficient for 2 to 3 shaves.
- When fully discharged, you may also shave with the shaver connected to an electrical outlet via the special cord set.

Shaving

Press the «on/off» switch (4) to turn the shaver on.

Trimmer: When the long hair trimmer (5) is activated, it allows controlled trimming of moustache or sideburns.

Tips for the perfect shave

- We recommend that you shave before washing, as the skin tends to be slightly swollen after washing.
- Hold the shaver at right angles (90°) to the skin. Stretch the skin and shave against the direction of beard growth.
- To maintain 100% shaving performance, replace your foil and cutter block every 18 months or when worn.

Cleaning

Always unplug the appliance before cleaning.

Regular cleaning ensures better shaving performance. Rinsing the shaving head after each shave under hot running water is an easy and fast way to keep it clean:

- Switch the shaver on (cordless) and rinse the shaving head under hot running water. A natural based soap may also be used provided it contains no particles or

abrasive substances. Rinse off all foam and let the shaver run for a few more seconds.

- Next switch the shaver off and press the release buttons. Lift the shaver foil off and pull the cutter block out. Then leave the disassembled shaving parts to dry.

Alternatively, you may clean the shaver using the brush provided:

- Switch the shaver off. Press the release buttons and lift shaver foil off.
- Using the brush, clean the cutter block and the inner area of the shaver head. However, do not clean the shaver foil with the brush as this may damage the foil.

Keeping your shaver in top shape

About every four weeks, clean the cutter block with Braun cleaning agents. Put a drop of light machine oil onto the long hair trimmer and the shaver foil.

Preserving the batteries

In order to maintain the optimum capacity of the rechargeable batteries, the shaver has to be fully discharged (through normal use) every 6 months approximately. Then recharge the shaver to full capacity. Do not expose the shaver to temperatures higher than 50 °C for extended periods of time.

Replacing the shaving parts

To maintain 100% shaving performance, replace your foil and cutter block every 18 months or when worn. Change both parts at the same time for a closer shave with less skin irritation.

(Shaver foil and cutter block: part no. 4000)

Environmental notice

This appliance is provided with nickel-cadmium rechargeable batteries.

To protect the environment, do not dispose of this appliance in the household waste at the end of its useful life. Disposal can take place at a Braun Service Centre or appropriate collection sites.



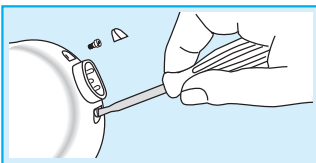
However, if you prefer to dispose of the appliance yourself, remove the batteries as shown on page 31.

Subject to change without notice.

This product conforms to the EMC-Directive 89/336/EEC and to the Low Voltage Regulation (73/23 EEC).



Electric specifications see printing on the special cord set.



Deutsch

Akku-Entsorgung am Ende der Lebensdauer des Gerätes

Öffnen Sie das Handstück wie dargestellt. Nehmen Sie den Akku heraus und entsorgen Sie ihn gemäß örtlicher Vorschriften für Umweltschutz und Rohstoffrückgewinnung. Vorsicht! Durch das Öffnen wird das Gerät zerstört. Keine Garantie für ein geöffnetes Gerät.

English

Battery removal at the end of the product's useful life

Open the handle as shown, remove the battery and dispose of it according to local environmental regulations. Caution: Opening the handle will destroy the appliance and invalidate the guarantee.

Français

Retrait des batteries à la fin de la durée de vie du produit

Ouvrir le corps de brosse comme indiqué, retirer les batteries et les mettre au rebut, conformément à la réglementation sur l'environnement.

Attention : en ouvrant l'appareil, vous le détruisez et la garantie est invalidée.

Español

Extracción de la pila al finalizar la vida útil del producto

Abra el mango como se indica, extraiga la pila, y deséchela conforme a la normativa medioambiental local.

Aviso: La apertura del mango inutilizará el aparato e invalidará la garantía.

Português

Remoção da bateria no fim da vida útil do produto

Abra o cabo da escova conforme a figura, retire a bateria e deite-a fora de acordo com as normas ambientais locais.

Atenção: a abertura do cabo da escova destrói o aparelho e invalida a garantia.

Italiano

Eliminazione delle batterie alla fine del ciclo di vita del prodotto

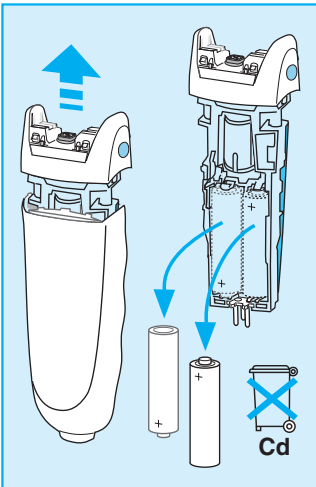
Aprire il corpo motore come illustrato in figura, rimuovere le batterie e smaltirle seguendo le locali norme ambientali.

Attenzione: l'apertura del corpo motore distrugge lo strumento ed invalida la garanzia del prodotto.

Nederlands

Het verwijderen van batterijen aan het eind van de nuttige levensduur van het apparaat

Open het aandrijfdeel als hiernaast afgebeeld, verwijder de batterij en lever deze in bij de daarvoor bestemde adressen.



Deutsch

Garantie

Als Hersteller übernehmen wir für dieses Gerät – nach Wahl des Käufers zusätzlich zu den gesetzlichen

Gewährleistungsansprüchen gegen den Verkäufer – eine Garantie von 2 Jahren ab Kaufdatum. Innerhalb dieser Garantiezeit beseitigen wir nach unserer Wahl durch Reparatur oder Austausch des Gerätes unentgeltlich alle Mängel, die auf Material- oder Herstellungsfehlern beruhen.

Die Garantie kann in allen Ländern in Anspruch genommen werden, in denen dieses Braun Gerät von uns autorisiert verkauft wird.

Von der Garantie sind ausgenommen:

Schäden durch unsachgemäßen Gebrauch, normaler Verschleiß und Verbrauch sowie Mängel, die den Wert oder die Gebrauchstauglichkeit des Gerätes nur unerheblich beeinflussen. Bei Eingriffen durch nicht von uns autorisierte Braun Kundendienstpartner sowie bei Verwendung anderer als Original Braun Ersatzteile erlischt die Garantie.

Im Garantiefall senden Sie das Gerät mit Kaufbeleg bitte an einen autorisierten Braun Kundendienstpartner. Die Anschrift für Deutschland können Sie kostenlos unter 00800/27 28 64 63 erfragen.

English

Guarantee

We grant 2 years guarantee on the product commencing on the date of purchase. Within the guarantee period we will eliminate, free of charge, any defects in the appliance resulting from faults in materials or workmanship, either by repairing or replacing the complete appliance as we may choose.

This guarantee extends to every country where this appliance is supplied by Braun or its appointed distributor.

This guarantee does not cover: damage due to improper use, normal wear or use as well as defects that have a negligible effect on the value or operation of the appliance.

The guarantee becomes void if repairs are undertaken by unauthorised persons and if original Braun parts are not used.

To obtain service within the guarantee period, hand in or send the complete appliance with your sales receipt to an authorised Braun Customer Service Centre.

For UK only:

This guarantee in no way affects your rights under statutory law.

Françe

Garantie

Nous accordons une garantie de 2 ans sur ce produit, à partir de la date d'achat. Pendant la durée de la garantie, Braun prendra gratuitement à sa charge la réparation des vices de fabrication ou de matière en se réservant le droit de décider si certaines pièces doivent être réparées ou si l'appareil lui-même doit être échangé.

Cette garantie s'étend à tous les pays où cet appareil est commercialisé par Braun ou son distributeur exclusif.

Cette garantie ne couvre pas : les dommages occasionnés par une utilisation inadéquate et l'usure normale. Cette garantie devient caduque si des réparations ont été effectuées par des personnes non agréées par Braun et si des pièces de rechange ne provenant pas de Braun ont été utilisées.

Pour toute réclamation intervenant pendant la période de garantie, retournez ou rapportez l'appareil ainsi que l'attestation de garantie à votre revendeur ou à un Centre Service Agréé Braun.

Appelez au 01.47.48.70.00 pour connaître le Centre Service Agréé Braun le plus proche de chez vous.

Clause spéciale pour la France

Outre la garantie contractuelle exposée ci-dessus, nos clients bénéficient de la garantie légale des vices cachés prévue aux articles 1641 et suivants du Code civil.