

# BRAUN

3775  
3770



InterFace<sup>Excel</sup>

Type 5635  
Type 5634



## Braun Infoline

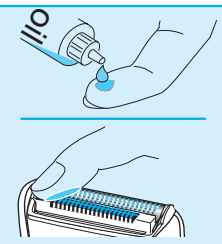
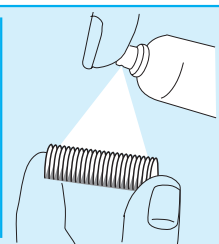
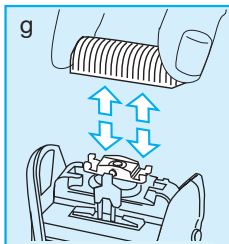
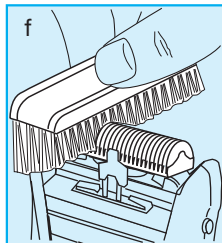
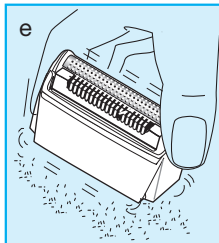
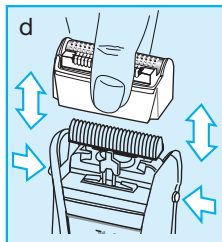
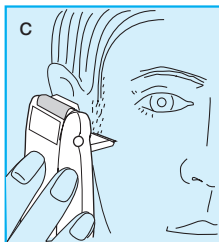
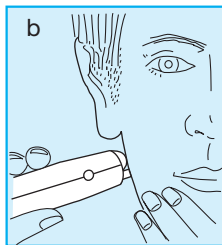
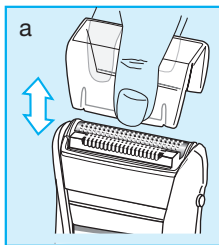
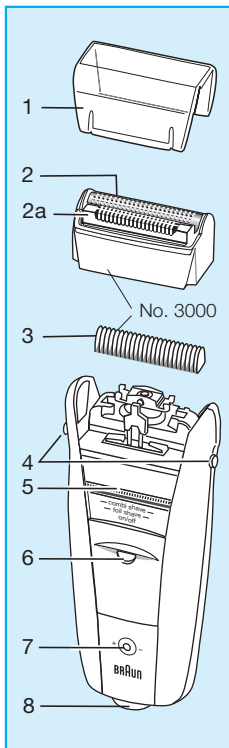
Deutsch	4, 6, 44
English	7, 9, 44
Français	10, 12, 44
Español	13, 15, 44
Português	16, 18, 44
Italiano	19, 21, 44
Nederlands	22, 24, 44
Dansk	25, 27, 44
Norsk	28, 30, 44
Svenska	31, 33, 44
Suomi	34, 36, 44
Türkçe	37, 44
Ελληνικά	40, 43, 44

### Internet:

[www.braun.com](http://www.braun.com)

5-635-301/00/X-05/M  
D/GB/F/E/P/I/NL/DK/N/S/FIN/  
TR/GR  
Printed in China

- D** Haben Sie Fragen zu diesem Produkt?
- A** Rufen Sie an (gebührenfrei):  
**00 800 27 28 64 63**  
**00 800 BRAUNINFOLINE**  
**08 44 - 88 40 10**
- CH** **08 44 - 88 40 10**
- GB** **Helpline**  
Should you require any further assistance please call Braun (UK) Consumer Relations on  
**0800 783 70 10**
- IRL** **1 800 509 448**
- E** Servicio al consumidor para España:  
**901 11 61 84**
- P** Serviço ao Consumidor para Portugal:  
**808 20 00 33**
- I** Servizio consumatori:  
**(02) 6 67 86 23**
- NL** Heeft u vragen over dit produkt?  
Bel Braun Consumenten-infolijn:  
**0 800-445 53 88**
- B** Vous avez des questions sur ce produit ?  
Appelez Braun Belgique  
**(02) 711 92 11**
- DK** Har du spørgsmål om produktet?  
Så ring  
**70 15 00 13**
- N** Spørsmål om dette produktet? Ring  
**22 63 00 93**
- S** Frågor om apparaten? Ring Kundservice  
**020 - 21 33 21**
- FIN** Onko Sinulla kysyttävää tuotteesta? Soita  
**0203 77877**
- TR** Müşteri Hizmetleri Merkezi:  
**0212 - 473 75 85**



## English

Our products are designed to meet the highest standards of quality, functionality and design. We hope you enjoy your new Braun shaver.

### Warning

- Keep the appliance dry.
- For safety reasons, periodically check the cord for damage and replace it.

## 1 Description

- |    |                           |   |   |
|----|---------------------------|---|---|
| 1  | Foil protection cap       | 6 | Switch  |
| 2  | Shaver foil               | 7 | 3775 model: Dual function light:<br>charging (green)/low charge (red) |
| 2a | InterFace trimmer         |   | 3770 model: Charging light (green)                                    |
| 3  | Cutter block              | 8 | Shaver socket   |
| 4  | Release button            |   |   |
| 5  | Pop-out long hair trimmer |   |   |

## 2 Charging the shaver

- When charging for the first time: Connect the shaver to the mains and charge it for at least 4 hours (switch position «off»). Then shave without the cord until the batteries are fully discharged. Then recharge to full capacity again (subsequent charges will take about 1 hour).
- The green charging light shows that the shaver is being charged. When the rechargeable battery is fully charged, the charging light goes off. If later on, the charging light comes on again, this indicates that the shaver is being recharged to maintain its full capacity.
- 3775 model: The red low-charge light glows when the battery capacity has dropped below 20%, provided the shaver is switched on. The remaining capacity will then be sufficient for 1 to 2 shaves.
- A full charge will give up to 30 minutes of cordless shaving time depending on your beard growth. However, the maximum battery capacity will only be reached after several charging/discharging cycles. Best environmental temperature range for charging is 15 °C to 35 °C.
- Wattage: 4 Watts  
Voltage range during charging: 12–240 V ≈ / 50 or 60 Hz (automatic adaptation)

## 3 Shaving

### 3.1 Switch positions

- |             |  |
|-------------|--|
| off         | = Switch is locked.  |
| foil shave  | = Shaver foil only.  |
| combi shave | = Combination shave (InterFace trimmer works in tandem with the shaver foil to first cut the longer problem hairs, which then allows the foil to shave the shorter hairs even closer) (b). |
| trimmer     | = The long hair trimmer is activated (for trimming sideburns, moustache and beard) (c).  |

### 3.2 Shaving with the cord

If the batteries are discharged, you may also shave with the shaver connected to the mains (100–240 V ~). (If the shaver should not run immediately, charge it with the switch position «off» for approx. 1 minute.)

#### Tips for the perfect shave

- We recommend that you shave before washing, as the skin tends to be slightly swollen after washing.
- Hold the shaver at right angles (90°) to the skin.
- Stretch your skin and shave against the direction of beard growth.
- To maintain 100% shaving performance, replace your foil and cutter block every 18 months or when worn.

## 4 Keeping your shaver in top shape

### 4.1 Cleaning

- After shaving, switch the shaver off. Press the release buttons, take off the shaver foil (d) and gently tap it out on a flat surface (e).
- Then thoroughly clean the cutter block with the brush (f). About every four weeks, clean the cutter block with Braun cleaning agents (g).
- Do not clean the shaver foil with the brush.
- If you have a very dry skin and you notice a reduced operation time of the shaver, you should put a drop of light machine oil onto the InterFace trimmer and shaver foil (g).

### 4.2 Replacing the shaving parts

- To maintain 100% shaving performance, replace your foil and cutter block every 18 months or when worn. Change both parts at the same time for a closer shave with less skin irritation.  
(Shaver foil and cutter block: part no. 3000)
- Press the release buttons, take off the shaver foil. Replace the new shaver foil in the right direction until it locks in place.
- To remove the cutter block, lift it off (g).
- To replace the cutter block, snap onto the holding studs.

### 4.3 Preserving the rechargeable batteries

- In order to optimise the capacity and life of the batteries, the shaver should be fully discharged through regular use every 6 months approximately. Then recharge to full capacity again. This reconditions the rechargeable batteries.
- Do not expose the shaver to temperatures of more than 50 °C for long periods of time.

## 5 Environmental notice

This product contains rechargeable batteries. In the interest of protecting the environment, please do not dispose of the product in the household waste at the end of its useful life. Disposal can take place at a Braun Service Centre or at appropriate collection points provided in your country.



Subject to change without notice.

This product conforms to the European Directives EMC 89/336/EEC and Low Voltage 73/23/EEC.



### Guarantee

We grant 2 years guarantee on the product commencing on the date of purchase. Within the guarantee period we will eliminate, free of charge, any defects in the appliance resulting from faults in materials or workmanship, either by repairing or replacing the complete appliance as we may choose. This guarantee extends to every country where this appliance is supplied by Braun or its appointed distributor.

This guarantee does not cover: damage due to improper use, normal wear and tear (e.g. shaver foil or cutter block) as well as defects that have a negligible effect on the value or operation of the appliance. The guarantee becomes void if repairs are undertaken by unauthorised persons and if original Braun parts are not used.

To obtain service within the guarantee period, hand in or send the complete appliance with your sales receipt to an authorised Braun Customer Service Centre.

### For UK only:

This guarantee in no way affects your rights under statutory law.