

BRAUN

3615
3614
3612



InterFace

Type 5 629



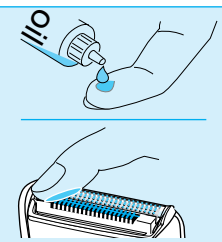
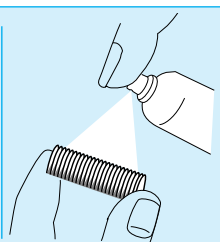
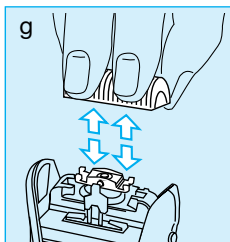
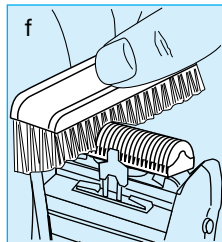
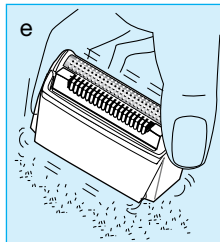
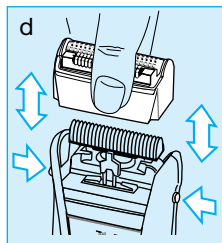
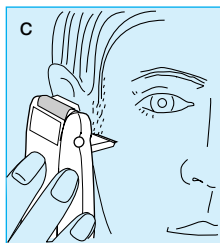
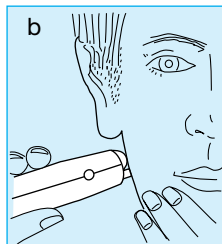
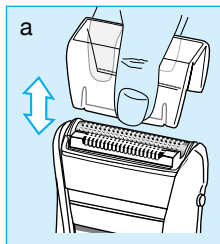
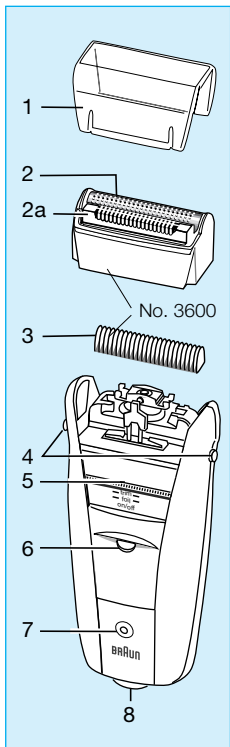
Braun Infoline

Deutsch	4, 6, 42
English	7, 9, 42
Français	10, 12, 42
Español	13, 15, 42
Português	16, 18, 42
Italiano	19, 21, 42
Nederlands	22, 24, 42
Dansk	25, 27, 42
Norsk	28, 30, 42
Svenska	31, 33, 42
Suomi	34, 36, 42
Türkçe	37, 42
Ελληνικά	39, 41, 42

Internet:

www.braun.com

- (D)** Haben Sie Fragen zu diesem Produkt?
Rufen Sie an: (in Deutschland und Österreich zum Nulltarif)
00 800 27 28 64 63
00 800 BRAUNINFOLINE
- (CH)** **08 44 - 88 40 10**
- (E)** Servicio al consumidor para España:
9 01-11 61 84
- (P)** Serviço ao Consumidor para Portugal:
080 820 00 33
- (I)** Servizio consumatori:
(02) 6 67 86 23
- (NL)** Heeft u vragen over dit produkt?
Bel Braun Consumenten-infolijn:
(070) 4 13 16 58
- (B)** Vous avez des questions sur ce produit ?
Appelez Braun Belgique
(02) 711 92 11
- (DK)** Har du spørgsmål om produktet? Så ring
70 15 00 13
- (N)** Spørsmål om dette produktet? Ring
88 02 55 03
- (S)** Frågor om apparaten? Ring Kundservice
020 - 21 33 21
- (FIN)** Onko Sinulla kysyttävää tuotteesta? Soita
0203 77877
- (TR)** Türkiye'deki Tüketici Danışma Servisi:
0 800 261 19 53



English

Our products are designed to meet the highest standards of quality, functionality and design. We hope you enjoy your new Braun shaver.

Caution

- Do not use the shaver near, or over, basins filled with water (e.g. bath tubs, showers etc.).
- For safety reasons, periodically check the cord for damage and replace it, if it is loose in the shaver socket.

1 Description

1	Foil protection cap	5	Pop-out long hair trimmer
2	Shaver foil	6	Switch
2a	Floating cutter	7	Charging light
3	Cutter block	8	Shaver socket
4	Release button		

2 Charging the shaver

- For the 3 first chargings: Connect the shaver to the mains and charge it for at least 4 hours (switch position «off»).
The charging light (7) illuminates when the shaver is in charging mode.
Then shave without the cord until it runs distinctly slower.
- Subsequent charges will take approximately 1 hour.
The full capacity is reached after several charge/discharge cycles.
A full charge will give you approximately 30 min shaving capacity.
- Wattage: 4 Watts
Voltage range during charging: 12–240 V \approx / 50 or 60 Hz (automatic adaptation).
Best environmental temperature range for charging: 15 °C to 35 °C.

3 Shaving

3.1 Switch positions

off = Switch is locked.

To activate it, press the red button and push the switch up:

on = Combination shave (simultaneous use of floating cutter and shaver foil).

The floating cutter cuts off 3-day beards or longer «problem hairs», the foil follows to give a close, smooth shave (b).

foil = Shaver foil only (for difficult to reach areas, e.g. under the nose).

trim = The long hair trimmer is activated (for trimming sideburns, moustache and beard) (c).

3.2 Shaving with the cord

If the cell unit is discharged, you may also shave with the shaver connected to the mains (100–240 V \approx). (If the shaver should not run immediately, charge it with the switch on position «off» for approx. 1 minute.)

Tips for the perfect shave

- We recommend that you shave before washing, as the skin tends to be slightly swollen after washing.
- Hold the shaver at right angles (90°) to the skin.
- Stretch your skin and shave against the direction of beard growth.
- Replace the shaver foil and cutter block every 1 1/2 years, or when the parts are worn, to ensure optimum shaving performance.

4 Keeping your shaver in top shape

4.1 Cleaning

- After shaving, switch the shaver off. Press the release buttons, take off the shaver foil (d) and gently tap it out on a flat surface (e).
- Then thoroughly clean the cutter block with the brush (f). About every four weeks, clean the cutter block with Braun cleaning agents (g).
- Do not clean the shaver foil with the brush.
- If you have a very dry skin and you notice a reduced operation time of the shaver, you should put a drop of sewing machine oil onto the floating cutter and shaver foil (g).

4.2 Replacing the shaving parts

- The shaver foil and cutter block are precision parts that, in time, are subject to wear. A regular replacement of the parts every 1 1/2 years or when these parts are worn, will ensure, that you are getting the close, comfortable and quick shave you expect from your Braun shaver.
(Shaver foil and cutter block: part no. 3600)
- Press the release buttons, take off the shaver foil. Replace the new shaver foil in the right direction until it locks in place.
- To remove the cutter block, lift it off (g).
To replace the cutter block, snap onto the holding studs.

4.3 Preserving the rechargeable battery

- In order to optimise the capacity and life of the battery, it should be fully discharged through regular use every 6 months approximately. Then recharge to full capacity again. This reconditions the rechargeable battery.
- Do not expose the shaver to temperatures of more than 50 °C for long periods of time.

5 Environmental notice

This appliance is provided with nickel-hydride rechargeable batteries. To protect the environment, do not dispose of the appliance in the household waste at the end of its useful life. Open the housing as shown on page 45, remove and dispose of the batteries at your retail store or at appropriate collection sites according to national or local regulations.

Subject to change without notice.

This product conforms to the EMC-Requirements as laid down by the Council Directive 89/336/EEC and to the Low Voltage Regulation (73/23 EEC).



Guarantee

We grant a 1 year guarantee on the product commencing on the date of purchase.

Within the guarantee period we will eliminate, free of charge, any defects in the appliance resulting from faults in material or workmanship either by repairing, or exchanging parts or exchanging the whole appliance as we may choose.

Not covered by this guarantee: damage arising from improper use (kinks in the shaver foil, breakage), normal wear on the shaver foil and defects which have a negligible effect on the value or operation of the appliance.

The guarantee becomes void if repairs are undertaken by unauthorized persons and if original Braun parts are not used.
The guarantee only comes into force if the date of purchase is confirmed by the dealer's stamp and signature on the guarantee card and registration card.

This guarantee extends to every country where this appliance is supplied by Braun or its appointed distributor and where no import restrictions or other legal regulations hinder or prevent service being given under guarantee.

Service under the guarantee does not affect the expiry date of the guarantee. The guarantee on parts or entire appliances which are exchanged ends when the guarantee on this appliance expires.

In the event of a claim under this guarantee, hand in the complete appliance with the valid guarantee card to your dealer, or send both to the nearest Braun Customer Service Centre.

All other claims including for damages resulting from this guarantee are excluded unless our liability is legally mandatory.

Those claims arising out of the sales contract with the vendor are not affected by this guarantee.

For UK only:

This guarantee in no way affects your rights under statutory law.

Braun InterFace

3615
3614
3612

Garantiekarte
Guarantee Card
Carte de garantie
Tarjeta de garantía
Cartão de garantia
Carta di garanzia
Garantiebewijs
Garantibevis
Köpbbevis
Takuukortti
Κάρτα εγγυήσεως

Braun InterFace

3615
3614
3612

Registrierkarte
Registration Card
Carte de contrôle
Tarjeta de registro
Cartão de registo
Cartolina di registrazione
Registratiekaart
Registreringskort
Κάρτα καταχώρησης

Kaufdatum
Date of purchase
Date d'achat
Fecha de adquisición
Data de compra
Data d'acquisto
Koopdatum
Købsdato
Kjøpsdato
Inköpsdatum
Ostopäivä
Ημερομηνία αγοράς

Stempel und Unterschrift des Händlers
Stamp and signature of dealer
Cachet et signature du commerçant
Sello y firma del proveedor
Carimbo e assinatura do revendedor
Timbro e firma del negozio
Stempel en handtekening van de handelaar
Forhandlerens stempel og underskrift
Stempel og underskrift av forhandleren
Återförsäljares stämpel och underskrift
Myyjän leima ja allekirjoitus
Σφραγίδα και υπογραφή καταστήματος