

# BRAUN

7493 

+



7475 



# Syncro

Type 5494

[www.braun.com/register](http://www.braun.com/register)

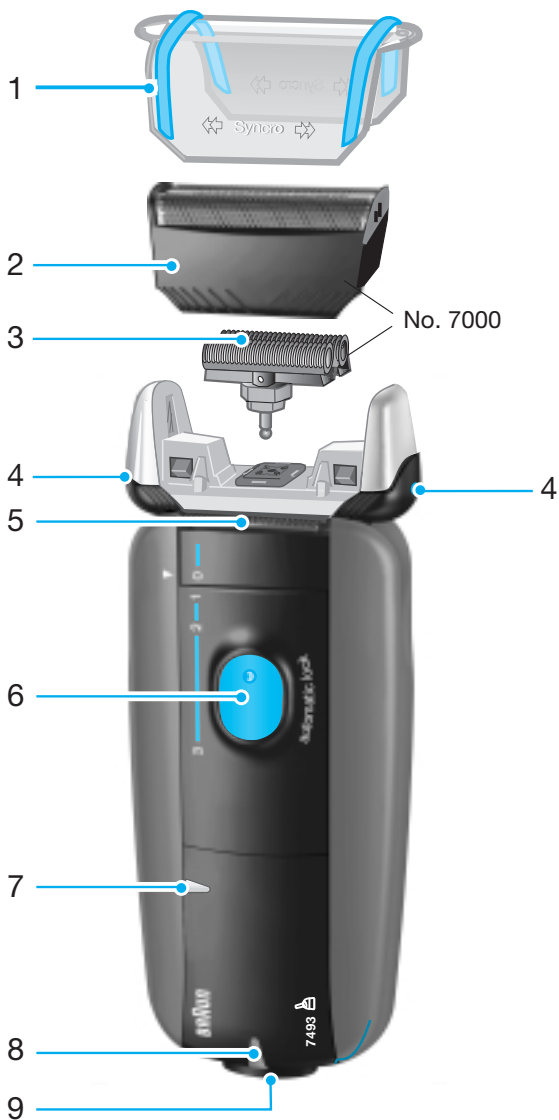


## Braun Infoline

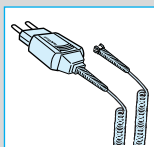
Deutsch	4, 56, 60
English	8, 56, 60
Français	12, 56, 60
Español	16, 57, 60
Português	20, 57, 60
Italiano	24, 57, 60
Nederlands	28, 58, 60
Dansk	32, 58, 60
Norsk	36, 58, 60
Svenska	40, 59, 60
Suomi	44, 59, 60
Türkçe	48, 60
Ελληνικά	52, 59, 60

- (D)** Haben Sie Fragen zu diesem Produkt?
- (A)** Rufen Sie an (gebührenfrei):  
**00 800 27 28 64 63**  
**00 800 BRAUNINFOLINE**
- (CH)** **08 44 - 88 40 10**
- (E)** Servicio al consumidor para España:  
**901 11 61 84**
- (P)** Serviço ao Consumidor para Portugal:  
**808 20 00 33**
- (I)** Servizio consumatori:  
**(02) 6 67 86 23**
- (NL)** Heeft u vragen over dit produkt?  
Bel Braun Consumenten-infolijn:  
**(070) 4 13 16 58**
- (B)** Vous avez des questions sur ce produit ?  
Appelez Braun Belgique  
**(02) 711 92 11**
- (DK)** Har du spørgsmål om produktet? Så ring  
**70 15 00 13**
- (N)** Spørsmål om dette produktet? Ring  
**22 63 00 93**
- (S)** Frågor om apparaten? Ring Kundservice  
**020 - 21 33 21**
- (FIN)** Onko Sinulla kysyttävää tuotteesta? Soita  
**0203 77877**
- (TR)** Müşteri Hizmetleri Merkezi:  
**0212 - 473 75 85**

# Syncro 7493/7475



Our products are designed to meet the highest standards of quality, functionality and design. We hope you enjoy your new Braun shaver.



## Warning

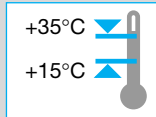
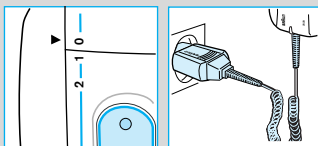
Your shaver is provided with a special cord set with an integrated Safety Extra Low Voltage power supply. Do not exchange or manipulate any part of it. Otherwise there is risk of electric shock.

## Description

- |                       |                          |
|-----------------------|--------------------------|
| 1 Foil protection cap | 6 Switch                 |
| 2 Shaver foil         | 7 Charging light (green) |
| 3 Cutter block        | 8 Pilot light            |
| 4 Foil release button | 9 Shaver socket          |
| 5 Long hair trimmer   |                          |

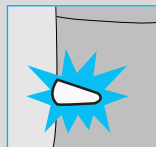
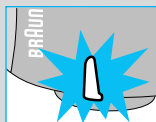
## Charging the shaver

- **First charging:** Using the special cord set, connect the shaver to the mains with the switch on position «0» and charge it for at least 4 hours (plug might get warm).
- Once the shaver is completely charged, shave without the cord until fully discharged. Then recharge to full capacity again (subsequent charges will take about 1 hour).
- A full charge will give up to 50 minutes of cordless shaving time depending on your beard growth. However, the maximum battery capacity will only be reached after several charging/discharging cycles.
- Best environmental temperature range for charging is 15 °C to 35 °C.



## Indicator lights

- The pilot light shows that the shaver is connected to the mains.
- The green charging light shows that the shaver is being charged. When the rechargeable battery is fully charged, the charging light flashes or goes off. If later on, the charging light comes on again, this indicates that the shaver is being recharged to maintain its full capacity.



## Shaving

### Switch positions

0 = Off (switch is locked)

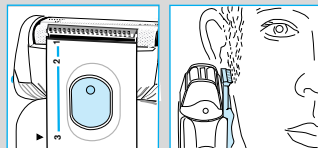
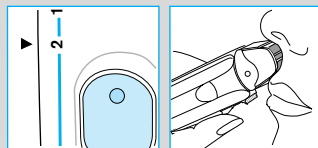
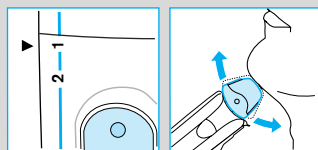
Press and push up the switch to operate the shaver:

- 1 = Shaving with the pivoting head (the pivoting cutting system automatically adjusts to every contour of your face).
- 2 = Shaving with the pivoting head locked at an angle (to permit shaving in difficult areas, e.g. under the nose).
- 3 = The long hair trimmer is activated (for trimming sideburns, moustache and beard).

### Shaving with the cord

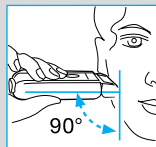
If the rechargeable battery is discharged, you may also shave connecting the shaver to an electrical outlet via the special cord set.

(If the shaver does not run immediately, charge it with the switch on position «0» for approx. 1 minute.)

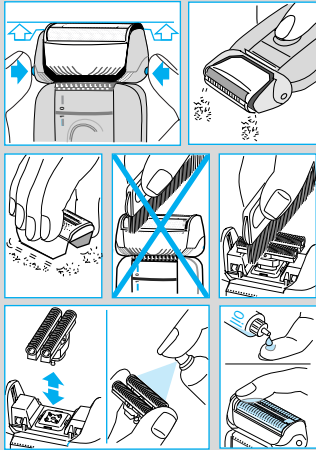


### Tips for the perfect shave

- We recommend that you shave before washing, as the skin tends to be slightly swollen after washing.
- Hold the shaver at right angles (90°) to the skin.
- Stretch your skin and shave against the direction of beard growth.
- To maintain 100% shaving performance, replace your foil and cutter block at least every 18 months or when worn.



## Keeping your shaver in top shape



7000

### Automated cleaning

The Braun Clean&Charge (only with model 7493) automatically takes care of all cleaning and lubrication needs of your shaver. Please refer to separate use instructions.

### Manual cleaning

For easy cleaning after each shave, switch the shaver off. Press the release buttons to lift the shaver foil (do not remove the foil completely). Switch on the shaver for approx. 5-10 seconds so that the shaved stubbles can fall out.

For a thorough cleaning (weekly), remove the shaving foil and tap it out on a flat surface. Using the brush, clean the cutter block and the inner area of the pivoting head. About every four weeks, clean the cutter block with Braun cleaning agents.

If your skin is very dry and you notice a reduced operation time of the shaver, apply a drop of light machine oil onto the shaver foil.

### Replacing the shaving parts

To maintain 100% shaving performance, replace your foil and cutterblock every 18 months or when worn. Change both parts at the same time for a closer shave with less skin irritation.

(Shaver foil and cutter block: part no. 7000)

### Preserving the cell unit

- In order to maintain the optimum capacity of the rechargeable battery, the shaver has to be fully discharged (by shaving) every 6 months approximately. Then recharge the shaver to full capacity again. This reconditions the rechargeable battery.
- Do not expose the shaver to temperatures of more than 50 °C for longer periods of time.

## Accessories

available at your dealer or Braun Service Centres:

- **Braun Clean&Charge**
- **Cleaning cartridge Clean&Charge (CCR)**
- **Shaver foil and cutter block** (part no. 7000)
- **Wall holder**

## Environmental notice

This appliance is provided with nickel-hydride rechargeable batteries. To protect the environment, do not dispose of the appliance in the household waste at the end of its useful life. Open the housing as shown, remove and dispose of the batteries at your retail store or at appropriate collection sites according to national or local regulations.

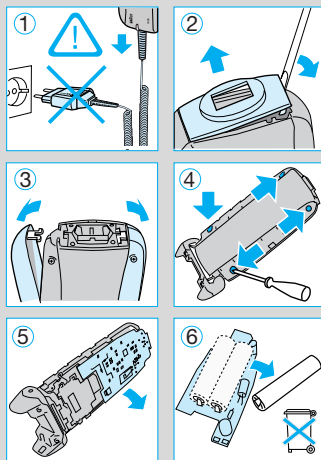
Subject to change without notice.

This product conforms to the EMC-Directive 89/336/EEC and to the Low Voltage Regulation 73/23 EEC.



Electric specifications see printing on the special cord set.

At the end of the product's useful life, please dispose of it at appropriate collection points provided in your country.



## Deutsch

### Garantie

Als Hersteller übernehmen wir für dieses Gerät – nach Wahl des Käufers zusätzlich zu den gesetzlichen Gewährleistungsansprüchen gegen den Verkäufer – eine Garantie von 2 Jahren ab Kaufdatum. Innerhalb dieser Garantiezeit beseitigen wir nach unserer Wahl durch Reparatur oder Austausch des Gerätes unentgeltlich alle Mängel, die auf Material- oder Herstellungsfehlern beruhen. Die Garantie kann in allen Ländern in Anspruch genommen werden, in denen dieses Braun Gerät von uns autorisiert verkauft wird.

Von der Garantie sind ausgenommen: Schäden durch unsachgemäßen Gebrauch (Knickstellen an der Scherfolie, Bruch), normaler Verschleiß (z.B. Scherfolie oder Klingenblock) sowie Mängel, die den Wert oder die Gebrauchstauglichkeit des Gerätes nur unerheblich beeinflussen. Bei Eingriffen durch nicht von uns autorisierte Braun Kundendienstpartner sowie bei Verwendung anderer als Original Braun Ersatzteile erlischt die Garantie.

Im Garantiefall senden Sie das Gerät mit Kaufbeleg bitte an einen autorisierten Braun Kundendienstpartner. Die Anschrift für Deutschland können Sie kostenlos unter 00800/27 28 64 63 erfragen.

## English

### Guarantee

We grant 2 years guarantee on the product commencing on the date of purchase. Within the guarantee period we will eliminate, free of charge, any defects in the appliance resulting from faults in materials or workmanship, either by repairing or replacing the complete appliance as we may choose.

This guarantee extends to every country where this appliance is supplied by Braun or its appointed distributor.

This guarantee does not cover: damage due to improper use, normal wear and tear (e.g. shaver foil or cutter block) as well as defects that have a negligible effect on the value or operation of the appliance. The guarantee becomes void if repairs

are undertaken by unauthorised persons and if original Braun parts are not used.

To obtain service within the guarantee period, hand in or send the complete appliance with your sales receipt to an authorised Braun Customer Service Centre.

### For UK only:

This guarantee in no way affects your rights under statutory law.

## Français

### Garantie

Nous accordons une garantie de 2 ans sur ce produit, à partir de la date d'achat. Pendant la durée de la garantie, Braun prendra gratuitement à sa charge la réparation des vices de fabrication ou de matière en se réservant le droit de décider si certaines pièces doivent être réparées ou si l'appareil lui-même doit être échangé.

Cette garantie s'étend à tous les pays où cet appareil est commercialisé par Braun ou son distributeur exclusif.

Cette garantie ne couvre pas: les dommages occasionnés par une utilisation inadéquate, l'usure normale (par exemple, grille et bloc-couteaux) ainsi que les défauts d'usures qui ont un effet négligeable sur la valeur ou l'utilisation de l'appareil. Cette garantie devient caduque si des réparations ont été effectuées par des personnes non agréées par Braun et si des pièces de rechange ne provenant pas de Braun ont été utilisées.

Pour toute réclamation intervenant pendant la période de garantie, retournez ou rapportez l'appareil ainsi que l'attestation de garantie à votre revendeur ou à un Centre Service Agréé Braun.

Appelez au 01.47.48.70.00 pour connaître le Centre Service Agréé Braun le plus proche de chez vous.

### Clause spéciale pour la France

Outre la garantie contractuelle exposée ci-dessus, nos clients bénéficient de la garantie légale des vices cachés prévue aux articles 1641 et suivants du Code civil.