

BRAUN

4615



Twin Control

Type 5100



English	6
Français	13
Español	19

Thank you for purchasing a Braun product.
We hope you are completely satisfied with
your new Braun shaver.

If you have any questions, please call:

US residents	1-800-BRAUN-11
	1-800-272-8611
Canadian residents	1-800-387-6657

Merci d'avoir fait l'achat d'un produit Braun.
Nous espérons que vous serez pleinement
satisfait de votre nouveau rasoir Braun.

Si vous avez des questions, veuillez appeler
Braun Canada : 1-800-387-6657

Gracias por haber comprado un producto
Braun.

Esperamos que Ud. quede completamente
satisfecho con su nueva afeitadora Braun.

Si Ud. tiene alguna duda, por favor, en México,
llame al: 01(800) 508-5800

Internet

www.Braun.com

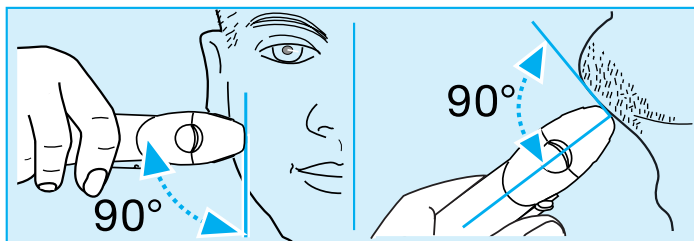
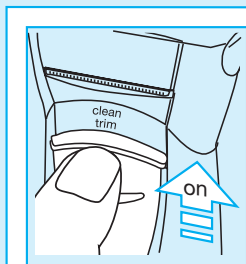
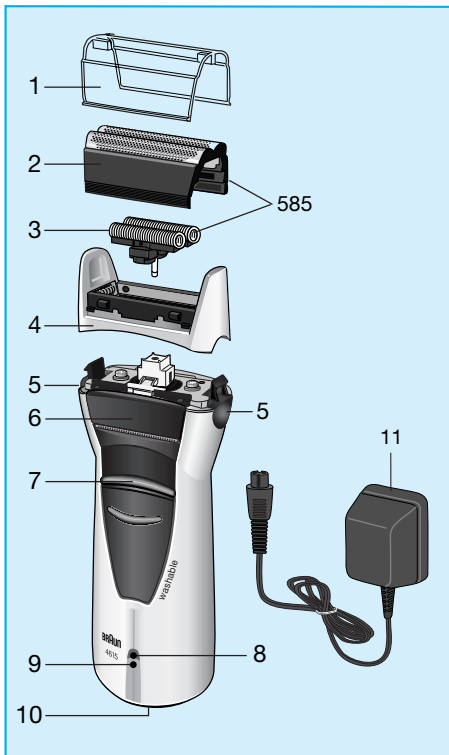
5-100-212/02/III-03/G2

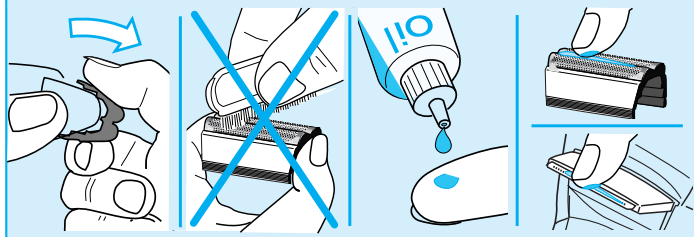
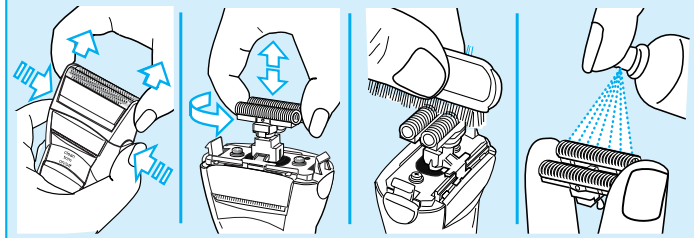
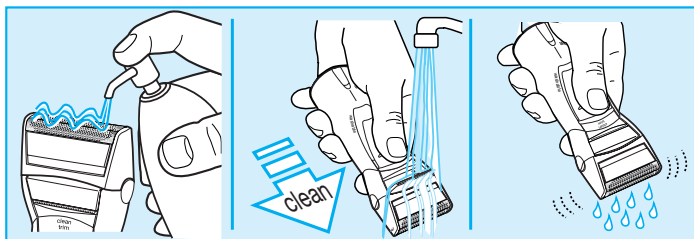
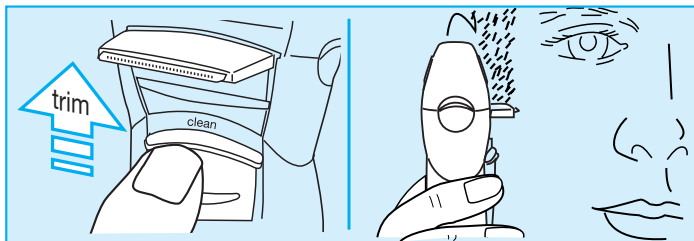
USA/CND/MEX

Printed in Germany

Imprimé en Allemagne

Impreso en Alemania





Technical specifications

Wattage via low voltage adapter:
4 W, input voltage 120 V ac / 50-60 Hz

Description

- 1 Foil protection cap
- 2 Shaver foil
- 3 Cutter block
- 4 Foil frame
- 5 Release buttons
- 6 Long hair trimmer
- 7 Central switch
- 8 Low charge light
- 9 Charging light
- 10 Shaver socket
- 11 Low voltage adapter

Charging the shaver

- Via the low voltage adapter, connect the shaver to an electrical outlet with the motor switched off. Charge for at least 8 hours (adapter and shaver might get warm). Once the shaver is completely charged, shave until fully discharged. Then recharge to full capacity again.
- A full charge will give up to 25 minutes of cordless shaving time depending on your beard growth. However, the maximum battery capacity will only be reached after several charging/discharging cycles.
- Best environmental temperature range for charging is 60 °F to 90 °F / 15°C to 35°C.

Indicator lights

- The green charging light shows that the shaver is being charged.
- The red low charge light will come on when the battery capacity has

dropped below 20%, provided the shaver is switched on. The remaining capacity will then be sufficient for 1 to 2 shaves.

Shaving

Turn on the shaver («on»)
Trimmer («trim»): When the long hair trimmer is activated, it allows the controlled trimming of moustache or sideburns.

Tips for the perfect shave

- We recommend that you shave before washing, as the skin tends to be slightly swollen after washing.
- Hold the shaver at right angles (90°) to the skin. Stretch your skin and shave against the direction of beard growth.
- To ensure optimum shaving performance, we recommend to replace the shaver foil and cutter block every 18 months, or when the parts are worn.

Keeping your shaver in top shape

Before cleaning, always unplug the shaver.

Cleaning under running water

After each shave, turn on the shaver and clean it under running hot water. Occasionally use soap (natural based liquid soap without particles and abrasive substances). Then rinse off all foam and let the shaver run for another moment.

Brush cleaning

Instead of cleaning under running water, you may clean your shaver with a dry

brush: turn the shaver off, remove the foil frame and, using the brush provided, clean the cutter block and the area below the cutter block. To clean underneath the long hair trimmer, push the switch to «clean».

Do not clean the shaver foil with the brush.

General cleaning

About every four weeks, clean the cutter block with Braun cleaning agents. Put a drop of light machine oil onto the long hair trimmer and shaver foil.

Replacing the shaving parts

The shaver foil and cutter block are precision parts that, in time, are subject to wear. To exchange the shaver foil, remove it from the foil frame as shown in the illustrations. Lift the foil first on the front side, then the back. Be careful that you do not squeeze the foil too tightly while removing or replacing.

Replace your shaver foil and cutter block every 18 months and get a 25% better shave.*

(Shaver foil and cutter block: part no. 585, available at your dealer or Braun Service Centers)

*(Overall evaluation from Braun users comparing their shave with new parts and those used for 18 months.)

Preserving the batteries

- In order to maintain the optimum capacity of the rechargeable batteries, the shaver has to be fully discharged (by shaving) every 6 months approximately. Then recharge the shaver to full capacity again.
- Do not expose the shaver to temperatures of more than 50°C or 122°F for longer periods of time.

Environmental notice

This appliance is provided with nickel-cadmium rechargeable batteries. To protect the environment, do not dispose of this appliance in the household waste at the end of its useful life. Disposal can take place at a Braun Service Center or appropriate collection sites.

Subject to change without notice



Attention:

The EPA certified RBRC Battery Recycling Seal on the Nickel-Cadmium (Ni-Cd) battery indicates Braun is voluntarily

participating in an industry program to collect and recycle these batteries at the end of their useful life, when taken out of service in the United States or Canada. The RBRC program provides a convenient alternative to placing used Ni-Cd batteries into the trash or the municipal waste stream, which may be illegal in your area.

Please call 1-800-8-BATTERY for information on Ni-Cd battery recycling and disposal bans/restrictions in your area. Braun's involvement in this program is part of our commitment to preserving our environment and conserving our natural resources.