

Oral-B®

**sonic
complete™**

NOT JUST SONIC. **ORAL-B SONIC COMPLETE.™**



powered by **BRAUN**



Infoline

- GB** **Helpline**
(free call): **0 800 73 11 792**
- CZ** **Zelenou linku**
00420-800-11-33-22
- SK** **Zelenú linku**
00420-800-11-33-22
- H** **Információs vonalat**
+36 (1) 801-3800
- TR** **Danışma Hattı**
0212-473-75-85
- GR** **Τηλεφων. βοήθεια**
210 9478700
- RUS** **Телефонный помощь**
8-800-200-1444
- UA** **Телефон допомоги**
38044 417 24 15

Internet:

www.oralb.com

www.braun.com

Congratulations!

You have chosen a sonic toothbrush specifically designed to offer you complete mouth care – **Oral-B Sonic Complete™**.

Oral-B Sonic Complete cares for the health of your mouth by helping prevent decay, stimulating gums and cleaning harmful, odor-causing bacteria from your tongue.

Oral-B Sonic Complete offers customised brushing modes targeting the needs of your mouth:

- «Clean» for a complete cleaning of your teeth and gums,
- «Soft» for the gentle care of your tongue and other sensitive areas,
- «Massage» for a gentle stimulation designed to help keep gums firm and healthy.

Oral-B Sonic Complete also features multi-angled, multi-textured bristles that are clinically proven to clean tooth surfaces, between teeth and along the gumline.

Oral-B Sonic Complete is brought to you by Oral-B, the worldwide leader in toothbrushes and the brand more dentists use themselves.

If you have any questions about using your new **Oral-B Sonic Complete** toothbrush, please visit our web site at www.oralb.com or contact our helpline (please see page 2).

Thank you for choosing **Oral-B Sonic Complete**.

Sincerely,

Bruce Cleverly
President, Oral-B

Not just sonic. **Oral-B Sonic Complete.™**

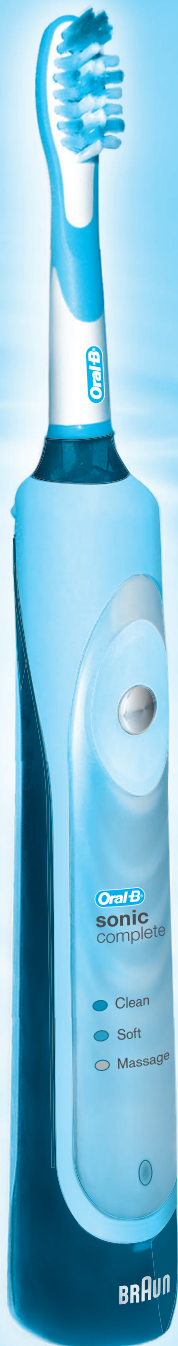
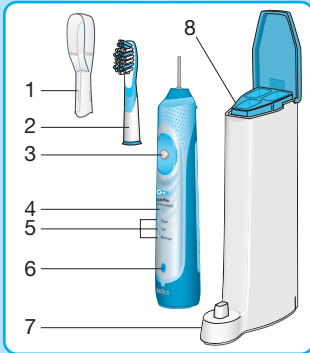


Table of contents

Introducing your Oral-B Sonic Complete	5
Getting to know your Oral-B Sonic Complete	6
Charging your Oral-B Sonic Complete	7
Ready to brush?	7
Customise your clean	8
Keeping your Oral-B Sonic Complete at its best	9
Caring for your environment	9
Questions? Ask Oral-B	10
Guarantee.....	11
Polski.....	12
Český	21
Slovenský.....	30
Magyar	39
Türkçe	48
عربي	68
Ελληνικά.....	69
Русский	79
Українська	90

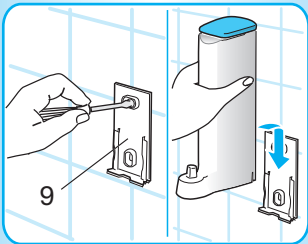
Introducing your Oral-B Sonic Complete

Every **Oral-B Sonic Complete** features the following:



- 1) Travel cap (deluxe model only)
- 2) Brush head
- 3) On/off button
- 4) Sonic handle
- 5) Brushing modes
- 6) Charge indicator
- 7) Charger base
- 8) Storage tower for additional brush heads
- 9) Wall holder

A travel case for your **Oral-B Sonic Complete** is included with all deluxe models.



Your **Oral-B Sonic Complete** comes with a convenient wall holder. The wall holder can be mounted easily using the enclosed items.

Important

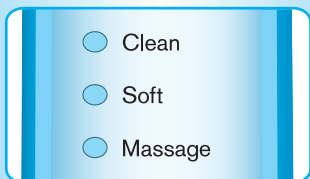
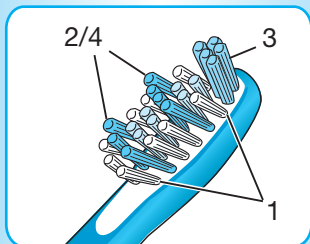
If the cord to your charger base should appear damaged, please contact the customer service centre immediately. A damaged or non-functioning base should no longer be used.

Getting to know your Oral-B Sonic Complete

Oral-B Sonic Complete has the following features designed to offer you complete mouth care:

Premium bristling technology

- 1) **CrissCross™** bristles
Advanced multi-textured bristles clinically proven to clean tooth surfaces, between teeth and along the gumline.
- 2) **Interdental** bristles
Raised to reach between teeth for better interdental cleaning.
- 3) **Power Tip™** bristles
Extra-long bristles at the tip to help clean hard-to-reach areas.
- 4) **Indicator®** bristles
Blue colour fades halfway with use, signaling the need to replace the brush head.

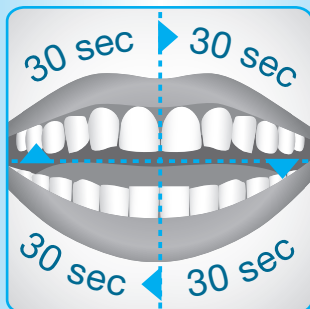


Different brushing modes for complete mouth care

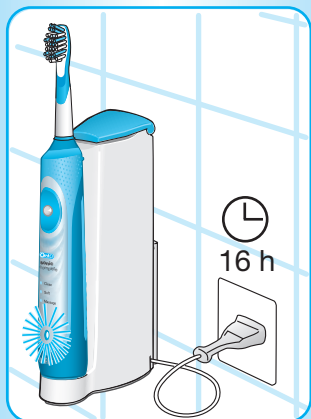
- **«Clean»**
for a complete cleaning of your teeth and gums.
- **«Soft»**
for the gentle care of your tongue and other sensitive areas.
- **«Massage»** (deluxe model only)
for a gentle stimulation designed to help keep gums firm and healthy.

Timers to encourage thorough brushing

- **Professional Timer:** A short stuttering sound at 30-second intervals reminds you to brush the four quadrants of your mouth equally for a better overall clean.
- **2-Minute Timer:** A longer stuttering sound indicates when the dentist recommended 2-minute brushing time has been reached.



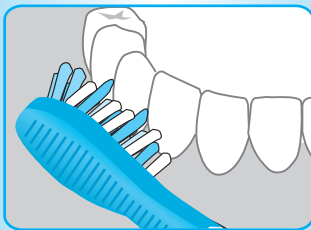
Charging your Oral-B Sonic Complete



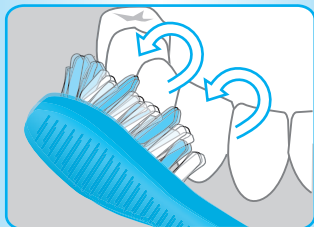
- When you place your handle on the charger base and plug the base into an electrical outlet, the blue charge indicator will light up. While charging, the light blinks. Once the handle is fully charged, the light will stop blinking and shine continuously. If you then use your brush and place it back on the charger, the charging light will again blink to let you know it is charging.
- A full charge lasts for approximately two weeks of regular brushing, so you can easily take your **Oral-B Sonic Complete** with you on holiday.
- Your **Oral-B Sonic Complete** is designed to provide you with an effective clean consistently. If the battery has run too low to provide this clean, your brush will stop. To resume brushing, place your handle on the charger base for a minimum of 10 minutes.
- We recommend keeping your brush on the charger base when not in use to maintain a full battery charge. If your rechargeable battery does run down completely, it will take about 16 hours for your **Oral-B Sonic Complete** to fully charge.
- To maintain the maximum capacity of the rechargeable battery, you should fully discharge it at least once every 6 months. To do this, unplug the charger base and allow the battery to run down with normal use.

Refer to the bottom of the charger base for voltage specifications.

Ready to brush?



- Slide the brush head on the handle. There will be a tiny space (2 mm) between the brush head and the handle. This is to allow for a full range of motion for the many brush head movements.
- Place the brush head in your mouth before turning on your **Oral-B Sonic Complete**.
- Angle the bristles toward the gumline (see diagram).
- Hold the handle with a light grip and turn your **Oral-B Sonic Complete** on.



- Gently move the brush head in a slightly circular motion. Allow the longer interdenal bristles to reach between your teeth, while the CrissCross bristles focus on cleaning the tooth surface and gumline regions.
- After a few seconds, glide the bristles to the next section and pause while you gently circulate the bristles again. Try using only light pressure and let your **Oral-B Sonic Complete** do the brushing for you.
- Adjust your brushing, so that you keep as many bristles in contact with your teeth as possible. Don't forget to reach all areas, including the inner and chewing surfaces, and behind the back teeth.

Remember to floss daily.

Customise your clean

Different brushing modes for complete mouth care:

- Clean
- Soft
- Massage

- «Clean»
for a complete cleaning of your teeth and gums.
- «Soft»
for the gentle care of your tongue and other sensitive areas.
- «Massage» (deluxe model only)
for a gentle stimulation designed to help keep gums firm and healthy.

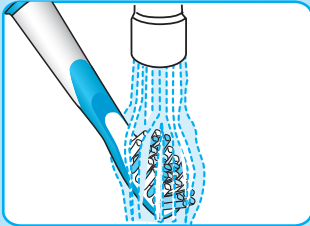
How to switch between modes:

- To start your **Oral-B Sonic Complete**, push the on/off button once, and your toothbrush automatically begins vibrating in the «Clean» mode.
- To shift from the «Clean» mode to the «Soft» mode, push the on/off button once more.
- If your **Oral-B Sonic Complete** has a «Massage» mode (deluxe model only), pushing the on/off button again will bring you from «Soft» to «Massage» mode.
- To turn your brush off from the «Massage» mode, push the on/off button again.
- If you wish to turn your **Oral-B Sonic Complete** off in the «Clean» or «Soft» mode, push and hold down the on/off button.

You may experience a slight tickling or tingling sensation when you first use **Oral-B Sonic Complete**. This will subside as your teeth and gums become accustomed to the **Oral-B Sonic Complete** cleaning experience. If you experience this initial tingling, you may want to brush in the «Soft» mode at first.

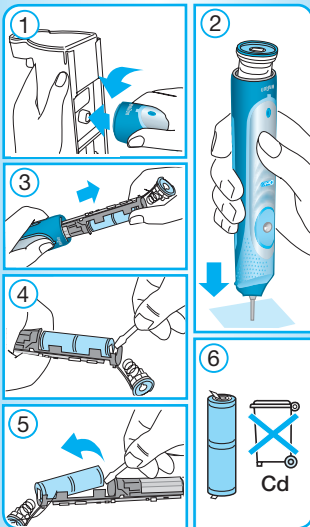
During the first few days of using your **Oral-B Sonic Complete**, it is possible that your gums may bleed slightly. This should stop after a few days. However, should it persist, please consult your dentist or hygienist.

Keeping your Oral-B Sonic Complete at its best



After brushing, switch off your **Oral-B Sonic Complete** and remove the brush head from the handle. Rinse the brush head under water. Wipe the handle dry after each use. Periodically wipe the charger base clean with a damp cloth. Do not use alcohol to clean any parts of your **Oral-B Sonic Complete**.

Caring for your environment





- **Oral-B Sonic Complete** has been designed to offer you complete mouth care for many years.
- Your **Oral-B Sonic Complete** contains a nickel cadmium battery. At the end of your product's life, please dispose of the rechargeable battery inside the handle properly. This battery cannot be replaced, but it is easily removed for recycling or proper disposal.
- To help protect your environment, please dispose of the battery properly at approved recycling or disposing locations in accordance with local regulations.

Subject to change without notice.

This product conforms to the EMC-Directive 89/336/EEC and to the Low Voltage Regulation 73/23 EEC.



 At the end of the product's useful life, please dispose of it at appropriate collection points  provided in your country.

Questions? Ask Oral-B

I have sensitive teeth and gums. What is the best way to brush with my Oral-B Sonic Complete?

If you have sensitive teeth and gums, plan for a 1-2 week adjustment period to your **Oral-B Sonic Complete**. During this time, we recommend using the «Soft» mode.

How can I best remove coffee, tea or tobacco stains?

Your **Oral-B Sonic Complete** is clinically proven to remove stains for naturally whiter teeth. For heavy stains, we recommend brushing slightly longer to aid in their removal.

My dentist told me I need to care more about my gums. Can my Oral-B Sonic Complete help?

Oral-B Sonic Complete is clinically proven to help you maintain firm, healthy gums. Proper brushing for the right amount of time is key to caring for your teeth and gums.

Oral-B Sonic Complete includes both the Professional Timer as well as the 2-Minute Timer. The Professional Timer lets you know when to move to the next quadrant of your mouth, so that you brush all four quadrants of your mouth equally and the 2-Minute Timer signals when the brushing time recommended by dental professionals has passed.

Can children use Oral-B Sonic Complete?

Yes. Children under 3 should only use the product under parental supervision to ensure that all teeth and areas of the mouth are properly cleaned. We recommend using the «Soft» mode of brushing on children's teeth, as this mode is specially designed for more delicate tooth and gum areas.

Someone in my family wears braces. What is the recommended way to brush with Oral-B Sonic Complete?

Gently place the brush at an angle between the brackets and gums. Using the «Clean» mode, move the brush in a light circular motion to clean both the brackets and teeth.

I have bridges, crowns and fillings in my mouth. What is the best way to brush with my Oral-B Sonic Complete?

Like all Oral-B power toothbrushes, **Oral-B Sonic Complete** can be used by people with bridges, implants and crowns. We recommend using the «Clean» mode to effectively remove plaque and bacteria and to help maintain firm, healthy gums.

One of my family members has a heart pacemaker. Can he or she use Oral-B Sonic Complete?

Your **Oral-B Sonic Complete** is believed to be safe with many common pacemakers. However, if you have any questions concerning usage with a pacemaker, consult your physician or pacemaker manufacturer prior to use.

I have recently had oral surgery. Can I use Oral-B Sonic Complete?

You should always follow the instructions given by your oral surgeon or periodontist after an operation. Typically in the first few days following surgery, teeth and gums may be too sensitive for any toothbrush use. As quickly as your teeth and gums heal to permit brushing, you can proceed with using **Oral-B Sonic Complete**. The powerful plaque removal capability of **Oral-B Sonic Complete** will be particularly beneficial, as a clean mouth will aid the healing process.

If I have comments/questions about my Oral-B Sonic Complete, what should I do?

For any additional questions or comments you have, please visit our website at www.oralb.com or contact our helpline (please see page 2).

Guarantee

We grant 2 years guarantee on the product commencing on the date of purchase. Within the guarantee period we will eliminate, free of charge, any defects in the appliance resulting from faults in materials or workmanship, either by repairing or replacing the complete appliance as we may choose.

This guarantee extends to every country where this appliance is supplied by Braun or its appointed distributor.

This guarantee does not cover: damage due to improper use, normal wear especially regarding the brushheads or use as well as defects that have a negligible effect on the value or operation of the appliance. The guarantee becomes void if repairs are undertaken by unauthorised persons and if original Braun parts are not used.

To obtain service within the guarantee period, hand in or send the complete appliance with your sales receipt to an authorised Braun Customer Service Centre.

For UK only:

This guarantee in no way affects your rights under statutory law.