

BRAUN

Oral-B

OC 15 525

OC 15 525 X, OC 15 545 X



OxyJet™ Center

Type 4715

Deutsch	4, 9, 95
English	10, 15, 95
Français	16, 21, 95
Español	22, 27, 95
Português	28, 33, 95
Italiano	34, 39, 95
Nederlands	40, 45, 95
Dansk	46, 51, 95
Norsk	52, 57, 95
Svenska	58, 63, 95
Suomi	64, 69, 95
Ελληνικά	70, 75, 95
Türkçe	76, 95
Русский	82, 86, 95
عربي	94, 88, 95

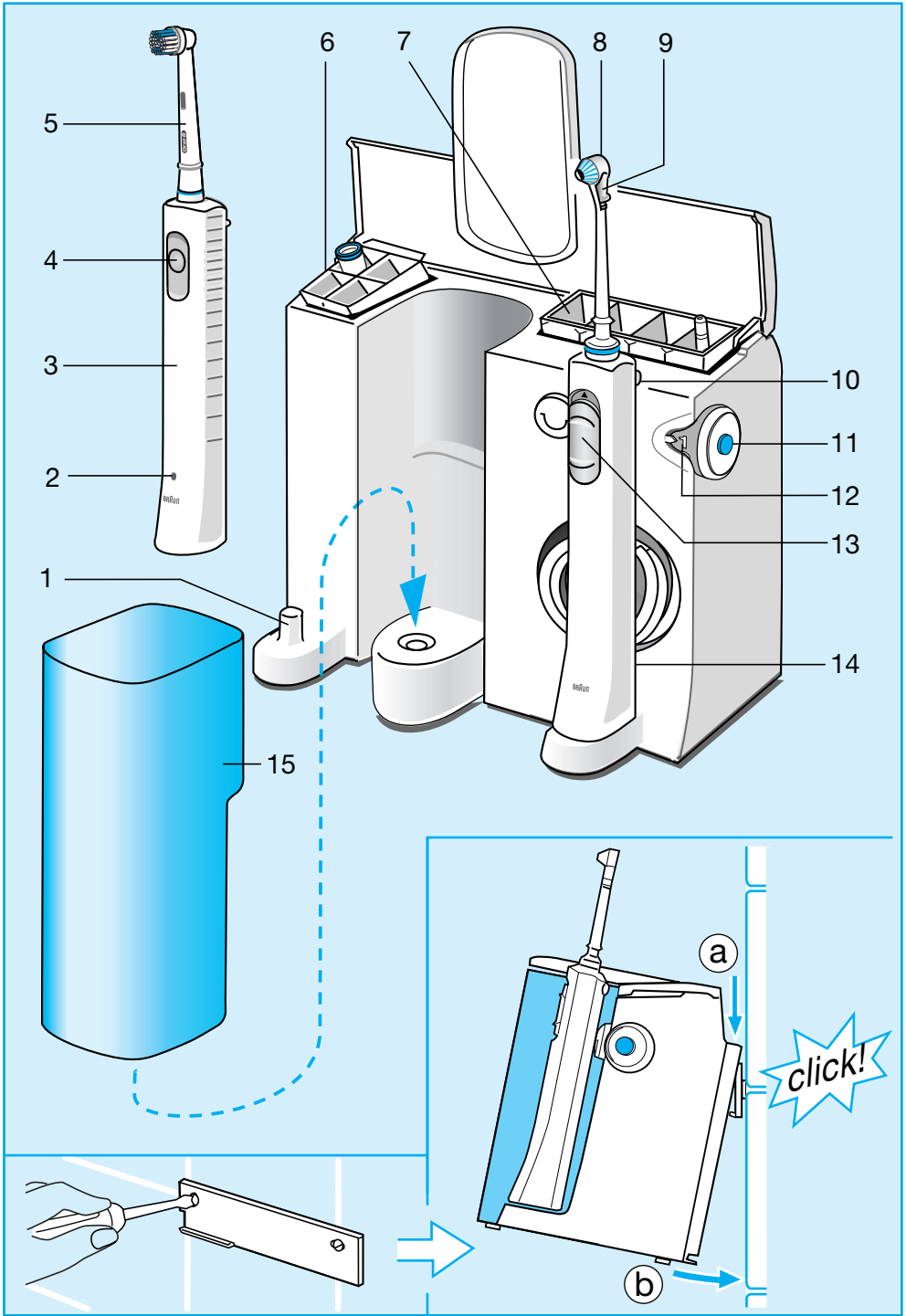
Internet:

www.braun.com
www.oralb.com



Braun Infoline

- Ⓓ Haben Sie Fragen zu diesem Produkt? Rufen Sie an: (in Deutschland und Österreich zum Nulltarif)
00 800 27 28 64 63
00 800 BRAUNINFOLINE
- Ⓒ🇨🇭 **08 44 - 88 40 10**
- Ⓔ Servicio al consumidor para España:
901-11 61 84
- Ⓟ Serviço ao Consumidor para Portugal:
080 820 00 33
- Ⓘ Servizio consumatori:
(02) 6 67 86 23
- Ⓝ🇳🇱 Heeft u vragen over dit produkt? Bel Braun Consumenten-infolijn:
(070) 4 13 16 58
- Ⓑ Vous avez des questions sur ce produit? Appelez Braun Belgique
(02) 711 92 11
- Ⓓ🇰🇩 Har du spørgsmål om produktet? Så ring
70 15 00 13
- Ⓝ Spørgsmål om dette produktet? Ring
88 02 55 03
- Ⓢ Frågor om apparaten? Ring Kundservice
020 - 21 33 21
- Ⓕ🇫🇮 Onko Sinulla kysyttävää tuotteesta? Soita
0203 77877
- Ⓓ🇹🇷 Türkiye'deki Tüketici Danışma Servisi:
0800 261 19 53



The Braun Oral-B OxyJet™ 3D Center has been developed together with leading dental professionals to effectively remove plaque from all areas of your teeth and to attack plaque bacteria.

The **Braun Oral-B 3D Plaque Remover** adds a gentle pulsating movement to its oscillation to create a deep-cleaning 3D brushing action. The plaque remover should be used twice a day for at least two minutes, the minimum brushing time recommended by dental professionals.

The **Braun Oral-B OxyJet™ irrigator** mixes air into water in the form of micro-bubbles. These micro-bubbles in the water stream attack plaque bacteria.

At the same time, it removes remaining food particles from between your teeth and massages your gums. Always use the irrigator after brushing your teeth.

Please read the use instructions carefully before first use.

Important

The plug should always be accessible.

Periodically check the cord for damage. Should this be the case, take the appliance to a Braun Service Centre. A damaged or non-functioning unit should no longer be used.

Description

Plaque remover

- ① Charging base
- ② Charge indicator
- ③ Plaque remover handle (rechargeable)
- ④ Switch
- ⑤ Brushhead
- ⑥ Brushhead compartment

Irrigator

- ⑦ Jet compartment
- ⑧ Irrigator jet
- ⑨ Jet switch
- ⑩ Jet release button
- ⑪ On/off switch
- ⑫ Water pressure control dial
- ⑬ Sliding switch (water stop and go)
- ⑭ Irrigator handle
- ⑮ Water container (600 ml/20 fl. oz.)

Specifications

Power supply: see bottom of housing

Power intake: 24 W

Using the plaque remover

Connecting and charging

Plug the appliance into an electrical outlet. Place the handle ③ on the charging base ①, the charge indicator will light up.

A full charge will take 16 hours and will provide 45 minutes operation time. For everyday use, the handle can be stored on the charging base to maintain it at full power. Overcharging is impossible.

Battery maintenance

To maintain the maximum capacity of the rechargeable battery, the following procedure should be done every 6 months: Do not place the handle back onto the charging base in order to discharge it by regular use. Once discharged, recharge the handle on the charging base.

Operating the switch

Press the switch ④ to operate the plaque remover, press again to stop it.

The «deluxe» models OC 15 525 X and OC 15 545 X additionally feature a reduced speed setting for sensitive areas of the mouth:

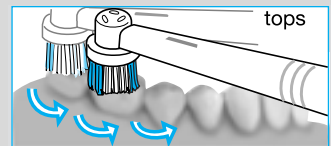
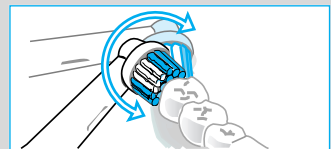
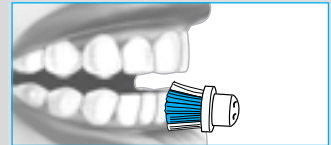
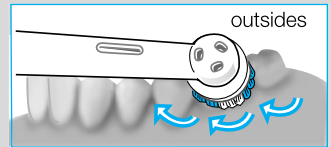
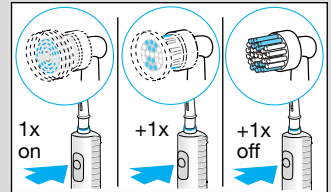
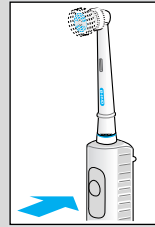
- Press the switch to operate with normal speed,
- press a second time to operate with reduced speed,
- press a third time to switch the handle off.

Removing plaque

The plaque remover can be used with any leading brand of toothpaste. However, we do not recommend toothpastes with whitening agents. To avoid splashing, guide the brushhead to your teeth before switching the handle on.

Guide the brushhead from tooth to tooth, following the curve of the gum and the shape of each tooth. Hold the brushhead in place for a few seconds before moving on to the next tooth. Brush the gums as well as the teeth. Do not press too hard nor scrub – simply let the brush do all the work.

During the first few days of using the plaque remover, your gums may bleed slightly. In general, bleeding should stop after a few days. Should it persist after 2 weeks, please consult your dentist or hygienist.

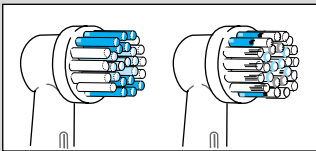


Pressure sensor

For safety and optimum brushing results, the plaque remover has a pressure control system: If too much pressure is applied, the oscillating movement of the brushhead will continue, but the pulsation will stop. There is a noticeable change in feeling and sound when the pressure sensor is activated.

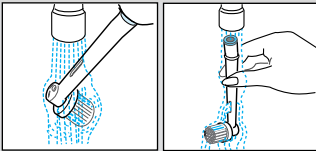
Memory timer

An incorporated timer memorises the elapsed brushing time, even when the handle is briefly switched off (max. 30 seconds). After two minutes – which is the minimum recommended brushing time – the timer signals by a short stutter.



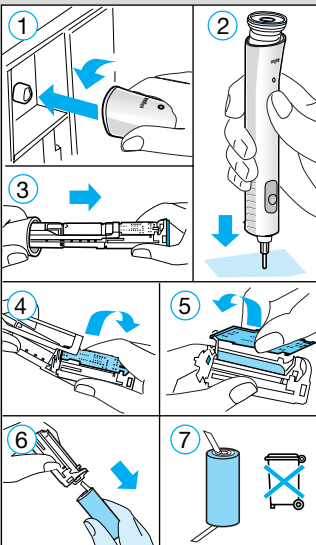
INDICATOR® brushhead

Dentists recommend that you replace any toothbrush every 3 months, since worn bristles do not remove plaque as effectively as new ones. Therefore, the brushhead is provided with indicator bristles. With proper brushing twice a day for two minutes using toothpaste, the colour will disappear half-way down the bristles in a 3-month period.



After use

Rinse the brushhead thoroughly under running water for several seconds with the handle switched on. Switch off the handle and take off the brushhead. Clean both parts separately under running water, then wipe them dry.



Environmental notice

The plaque remover handle is provided with a nickel-hydride rechargeable battery. To protect the environment, do not dispose of the product in the household waste at the end of its useful life. Open the handle as shown, remove the battery and dispose of it at your retail store or at appropriate collection sites according to national or local regulations.

Caution: Opening the handle will definitely destroy it.

Using the OxyJet™ Irrigator

Before using for the first time, fill the water container and allow the water to run through completely by holding the irrigator handle over a washbasin.

1. Attach one of the irrigator jets to the handle until it locks in place. Fill the water container with water and add mouthwash, if desired.
2. Turn on the irrigator by pressing the blue on/off switch. (When doing so, the sliding switch on the handle should not be pushed up.)
3. Select the water pressure with the pressure control dial (1 = gentle, 5 = strong). We recommend that you start with setting 1, especially if your gums tend to bleed or if children are using the irrigator.
4. Bend over the washbasin and guide the jet to your teeth and gums. Slide the handle switch up to start the water stream. Keep your mouth slightly open to allow the water to run into the washbasin.

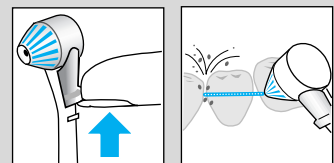
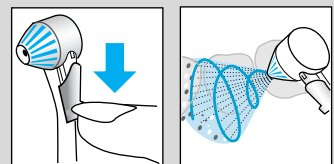
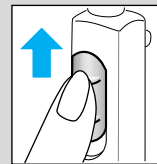
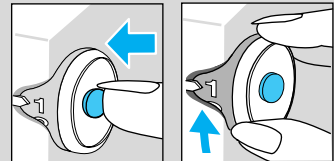
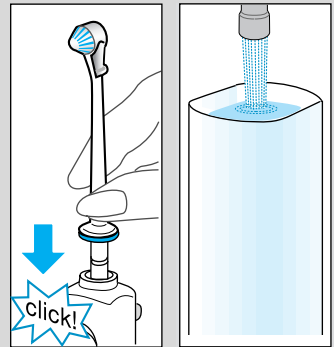
You can choose between two different jet functions by sliding the jet switch down or up (before doing so, turn off the water stream by pushing the sliding switch down):

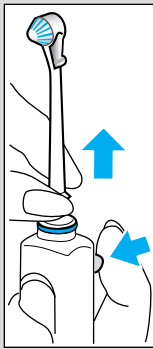
Rotating stream for general cleaning and gum massage (jet switch in lower position)

The rotation of the water stream and its micro-bubbles is designed for easy penetration below the gumline.

Mono stream: straight water stream for site-specific cleaning (jet switch in upper position)

Max. operating time: 15 minutes
Cooling off time: 2 hours





After use

Always empty the water container entirely. Otherwise bacteria could collect in the remaining water, if the unit is not used for some time. Should your dentist have recommended use of a chlorhexidine solution with your irrigator, allow some water to run through the irrigator after use with chlorhexidine, to prevent any deposit build-up.

Press the on/off switch to turn off the irrigator. The irrigator will automatically turn off after 10 minutes if you forget to turn it off manually. In this case, to turn it on again, you have to press the on/off switch twice.

To take off the irrigator jet, press the jet release button. The jets can be stored in the jet compartment. Wipe the handle dry and place it back onto its base.

Cleaning

Regularly clean the housing with a damp cloth. The water container, the brushhead compartment and the jet compartment are removable and dishwasher-safe.

Subject to change without notice.

This product conforms to the EMC-Requirements as laid down by the Council Directive 89/336/EEC and to the Low Voltage Regulation (73/23 EEC).



Guarantee

We grant a 1 year guarantee on the product commencing on the date of purchase. Within the guarantee period we will eliminate, free of charge, any defects in the appliance resulting from faults in material or workmanship either by repairing, or exchanging parts or exchanging the whole appliance as we may choose.

Not covered by this guarantee: damage arising from improper use (operation with incorrect current/voltage, plugging it into an unsuitable power point, breakage), normal wear and defects which have a negligible effect on the value or operation of the appliance.

The guarantee becomes void if repairs are undertaken by unauthorized persons and if original Braun parts are not used.

The guarantee only comes into force if the date of purchase is confirmed by the dealer's stamp and signature on the guarantee card and registration card.

This guarantee extends to every country where this appliance is supplied by Braun or its appointed distributor and where no import restrictions or other legal regulations hinder or prevent service being given under guarantee.

Service under the guarantee does not affect the expiry date of the guarantee. The guarantee on parts or entire appliances which are exchanged ends when the guarantee on this appliance expires.

In the event of a claim under this guarantee, hand in the complete appliance with the valid guarantee card to your dealer, or send both to the nearest Braun Customer Service Centre.

All other claims including for damages resulting from this guarantee are excluded unless our liability is legally mandatory.

Those claims arising out of the sales contract with the vendor are not affected by this guarantee.

For UK only:

This guarantee in no way affects your rights under statutory law.