



ProfessionalCare™

8500 series



powered
by **BRAUN**





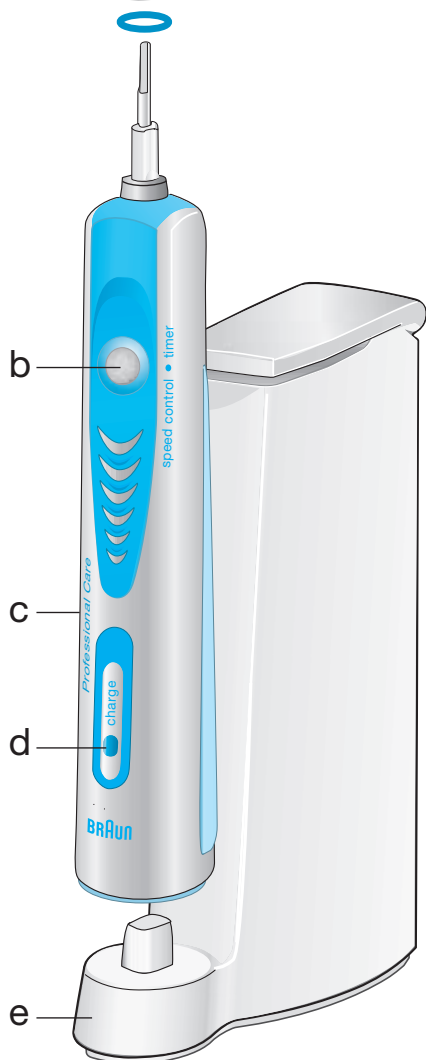
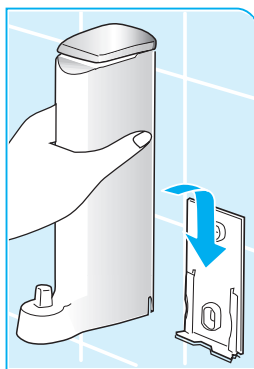
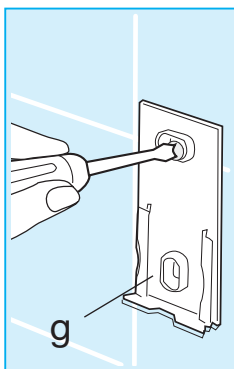
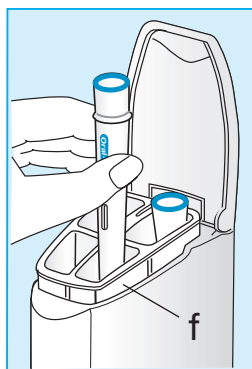
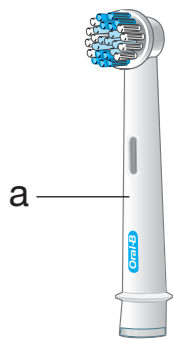
Infoline

English	4, 11, 84
Polski	12, 19, 84
Český	20, 27, 84
Slovenský	28, 35, 84
Magyar	36, 43, 84
Türkçe	44, 84
عربي	59, 51, 84
Ελληνικά	60, 67, 84
Русский	68, 75, 84
Українська	76, 83, 84

- GB** **Helpline**
(free call): **0 800 73 11 792**
- CZ** **Zelenou linku**
00420-800-11-33-22
- SK** **Zelenú linku**
00420-800-11-33-22
- H** **Információs vonalat**
+36 (1) 801-3800
- TR** **Danışma Hattı**
0212-473-75-85
- GR** **Helpline**
210 9478700
- RUS** **Телефонный помощь**
8-800-200-1444
- UA** **Телефон допомоги**
38044 417 24 15

Internet:

www.oralb.com
www.braun.com



h



1



2



3



4



Congratulations!

You have chosen an outstanding power toothbrush.

Oral-B® ProfessionalCare™ 8500 is a dentist-inspired oral care system for outstanding cleaning, gum care, whiter teeth and freshening.

It helps protect against gum disease for firm and healthy gums, cleans deep below the gumline and behind back teeth, naturally whitens teeth by removing stains and freshens your breath.

It delivers outstanding performance:

- Patented 3D oscillating-pulsating technology – for outstanding cleaning and gum care
- Innovative accessories and brushheads to clean and polish teeth as well as freshen your tongue and mouth
- Customised Speed Control which offers a broad variety of speed levels to meet your individual brushing needs
- Premium handle design and ergonomics for greater comfort and control

Oral-B® ProfessionalCare™ 8500 is brought to you by Oral-B, the worldwide leader in power toothbrushes and the brand more dentists use themselves.

If you have any questions about using your new **Oral-B® ProfessionalCare™ 8500**, please visit our web site at www.oralb.com or call (please see page 2).

Thank you for choosing
Oral-B® ProfessionalCare™ 8500.

Sincerely,

Bruce Cleverly
President, Oral-B

Oral-B® ProfessionalCare™ 8500 has been carefully designed to offer you and your family a new and unique brushing experience that is both safe and effective. However, when using electrical products, basic safety precautions should always be followed. Please read carefully before use.

Important

Periodically check the cord for damage. A damaged or non-functioning appliance should no longer be used. Take it to a Braun Service Centre.

Introducing your Oral-B® ProfessionalCare™ 8500

- a FlexiSoft® brushhead
- b On/off button
- c ProfessionalCare handle
- d Charge indicator
- e Charger base
- f Brushhead compartment
- g Wall holder
- h Range of brushheads and accessories

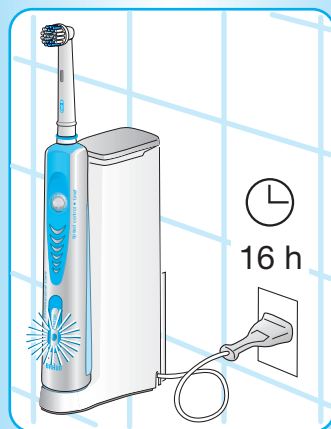
Connecting and charging

Your toothbrush has a waterproof handle, is electrically safe and can be used in the bathroom without hesitation.

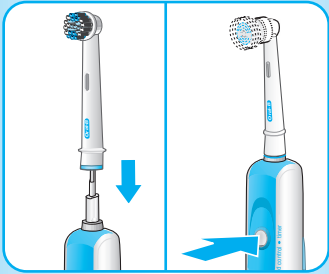
- Plug the charger base (e) into an electrical outlet and place the toothbrush handle (c) on the charger base.
- The blue charge indicator (d) flashes while the handle is being charged. If you then use your brush and place it back on the charger, the charging light will again flash to let you know it is charging.
- When the handle is fully charged, the charge indicator shines continuously. A full charge takes at least 16 hours and enables up to two weeks of regular brushing.
- When the rechargeable battery is running low, your toothbrush will slow down, then stop. It will then need a 10-minute charge before you can use it for a 2-minute cleaning session.
- For everyday use, the toothbrush handle can be stored on the charger base to maintain it at full power. Overcharging is impossible.
- To maintain the maximum capacity of the rechargeable battery, unplug the charger base and fully discharge the handle by regular use at least every 6 months.

Specifications

Refer to the bottom of the charger base for voltage specifications.



Using your toothbrush



Attach one of the brushheads (1 or 2) to the handle. They can be used with any kind of toothpaste. To avoid splashing, guide the brushhead to your teeth before switching the appliance on.

Customised Speed Control

Oral-B® ProfessionalCare™ 8500 offers a variable range of speeds to best meet your individual needs. High speed is ideal for tooth and gumline cleaning. For cleaning sensitive teeth and gum tissue as well as precision use of the accessory (4), we recommend using a lower speed.

- Press the on/off button once to operate at maximum speed.
- Continue to hold the on/off button to shift from the highest speed to the Customised Speed Control mode.
- As long as you keep the on/off button pressed, the handle will continuously run through all speed levels.
- Release the on/off button to brush with your preferred speed level.
- Push the on/off button once more to turn the toothbrush off.
- If you then turn it on again you will automatically come back to the maximum speed level.

Ultimate Plaque Removal

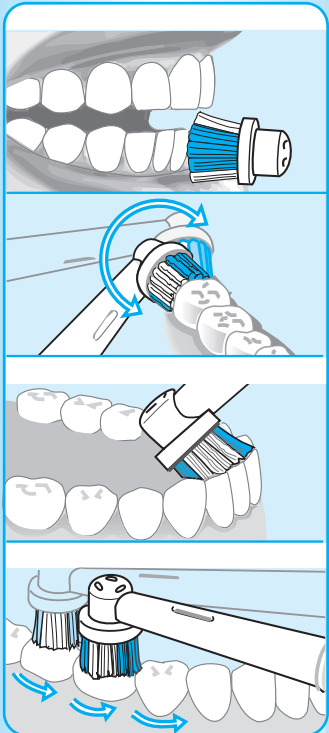
For cleaner teeth and healthier, firmer gums, **Oral-B® ProfessionalCare™ 8500** gently cleans in areas where plaque bacteria can collect. It removes up to 97% of plaque from hard-to-reach areas, prevents build-up of tartar and is gentle on teeth and gums.

Brushing technique:

- Guide the brushhead slowly from tooth to tooth.
- Hold the brushhead in place for a few seconds before moving on to the next tooth.
- Brush the gums as well as the teeth, first the outsides, then the insides, finally the chewing surfaces.
- Do not press too hard or scrub, simply let the brush do all the work.

Pressure Sensor

For optimal brushing results **Oral-B® ProfessionalCare™ 8500** has a pressure control feature to ensure that the right degree of pressure is applied. This helps protect your gums from excessive brushing and makes your toothbrush easy to operate. If too much pressure is applied, the oscillating movement of the brushhead will continue but the pulsation will stop. In addition to feeling it, you can also hear the difference.



Professional Timer

A short stuttering sound at 30-second intervals, which you can hear and feel, reminds you to brush the four quadrants of your mouth equally for a better overall clean.

2-Minute Timer

A long stuttering sound indicates when the dentist recommended 2-minute brushing time has been reached.

During the first few days of using the toothbrush, your gums may bleed slightly. In general, bleeding should stop after a few days. Should it persist after 2 weeks, please consult your dentist or hygienist.

Individual brushheads and accessories

The **Oral-B® ProfessionalCare™ 8500** offers you a variety of brushheads and accessories, allowing you to select those which best meet your individual needs. They are all designed for daily use:

1 FlexiSoft® brushhead

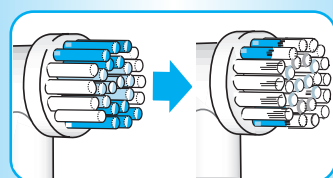
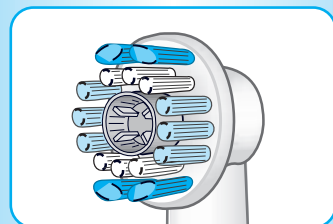
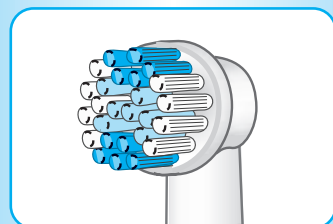
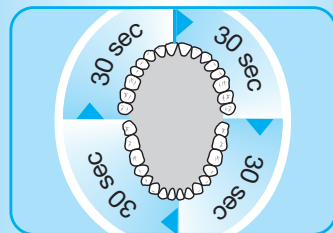
The FlexiSoft® brushhead features our outstanding oscillating-pulsating action to effectively clean your teeth, clean along the gumline and in hard-to-reach areas such as behind teeth. The compact round brushhead surrounds each tooth for a thorough clean. The green FlexiSoft® bristles bend, enabling both gentle brushing and deeper reach of the blue Interdental Tips between teeth.

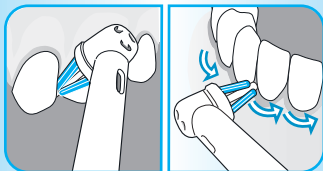
2 ProBright™ brushhead

The ProBright™ brushhead is specifically designed to polish and naturally whiten your teeth by removing coffee, tea and tobacco stains. It features our outstanding oscillating-pulsating head action of the FlexiSoft® brushhead to effectively clean teeth, combined with the special polishing cup for natural brightening. Although you can use any kind of toothpaste, a whitening paste is likely to result in optimal performance. We do not recommend using the ProBright™ brushhead with braces.

Apply the same brushing technique as described in the section «Ultimate Plaque Removal» for both brushheads.

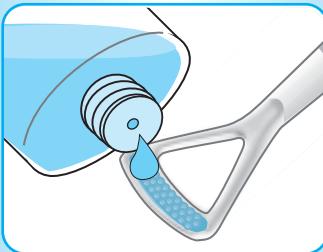
Both brushheads feature blue INDICATOR® bristles to help you monitor brushhead replacement. With thorough brushing, twice a day for two minutes, the blue colour will fade halfway within 3 months, signaling it is time to change the brushhead.





3 Interspace brushhead

The Interspace brushhead is designed for cleaning between teeth as well as around bridges, crowns and implants. To use, position brushhead at 45 degree angle to gumline. Slowly guide the brushhead along the gumline, pausing between teeth for optimal results.



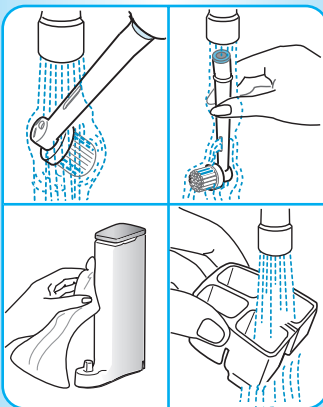
4 Tongue Freshener

The Tongue Freshener freshens breath by removing odour-causing bacteria from the tongue. It can be used everyday – before or after brushing. You can also use mouthwash with the Tongue Freshener.

Attach it to the handle, turn the appliance on and drag it across the tongue from back to front. We recommend a low speed setting for enhanced control during use. Rinse after use. Replace the Tongue Freshener when materials become worn.

Oral-B® ProfessionalCare™ 8500 replacement brushheads and accessories are available in stores that sell Oral-B products.

Cleaning recommendations



- After brushing, rinse your brushhead or accessory thoroughly under running water for several seconds with the handle switched on.
- Switch off the handle and remove the brushhead or accessory from the handle. Clean all parts separately under running water, then wipe them dry before you reassemble the brush and put the handle on the charger base.
- From time to time, also clean the charger base and the brushhead compartment with a damp cloth.
- For cleaning purposes, the brushhead compartment is removable.

Environmental notice

This product is provided with a nickel-hydrate battery, which does not contain any harmful heavy metals. Nevertheless, in the interest of protecting the environment, please do not dispose of the product in the household waste at the end of its useful life. Disposal can take place at a Braun Service Centre or at approved recycling or disposing locations in accordance with local regulations.

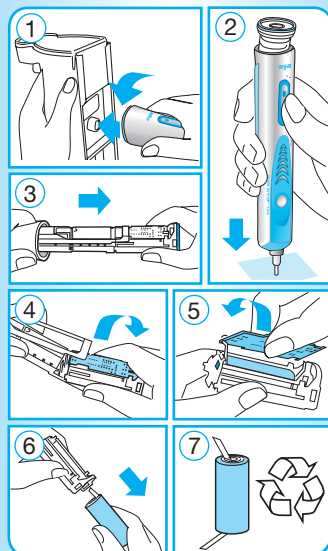
Battery removal at the end of the product's useful life

Open the handle as shown, remove the battery and dispose of it according to local environmental regulations.

Caution! Opening the handle will destroy the appliance and invalidate the guarantee.

Subject to change without notice.

This product conforms to the EMC-Directive 89/336/EEC and to the Low Voltage Regulation 73/23 EEC.



Questions? Ask Oral-B

I have sensitive teeth and gums.

What is the best way to brush with my Oral-B® ProfessionalCare™ 8500?

Oral-B® ProfessionalCare™ 8500 is as safe as a soft manual toothbrush at all speed levels. However, it gives you the flexibility to choose your desired speed level, best meeting your individual needs.

Can children use

Oral-B® ProfessionalCare™ 8500?

Given the product's enhanced plaque removal capabilities and equal safety to soft manual toothbrushes, **Oral-B® ProfessionalCare™ 8500** toothbrushes can be used by children. Children under age three should use the product under parental supervision, to ensure that all teeth and other areas of the mouth are properly cleaned. Children under 12 should not use the ProBright™ brushhead.

I wear braces.

What is the recommended way to brush?

Gently place the brush at an angle between the brackets and gums. Using a slower speed level will help maximize the precision. The Tongue Freshener can be used with braces, but use of the ProBright™ brushhead is not recommended. For everyday cleaning, Oral-B's Ortho brushhead is specifically designed to clean around braces and wires and can be used with the **Oral-B® ProfessionalCare™ 8500**.

I have bridges, crowns and fillings in my mouth. What is the best way to brush with my Oral-B® ProfessionalCare™ 8500?

Like all Oral-B power toothbrushes, **Oral-B® ProfessionalCare™ 8500** can be used by consumers with bridges, implants and crowns. We recommend using a slower mode for even better control.

I have recently had oral surgery. Can I use Oral-B® ProfessionalCare™ 8500?

You should always follow the instructions given by your oral surgeon or periodontist after an operation. Typically in the first few days following surgery, teeth and gums may be too sensitive for any toothbrush use. As quickly as your teeth and gums heal to permit brushing, you can proceed with using **Oral-B® ProfessionalCare™ 8500**. Its slow mode of brushing speed may be beneficial. The outstanding plaque removal capability will be particularly valuable, as a clean mouth will aid the healing process.

What happens if I use the Oral-B® ProfessionalCare™ 8500 Tongue Freshener at a high speed instead of the recommended low speed?

The **Oral-B® ProfessionalCare™ 8500** accessories can be operated at high or low speeds. However, we recommend the lower speed for optimal control.

If I have comments/questions about my Oral-B® ProfessionalCare™ 8500, what should I do?

For any additional questions or comments you have, please visit our website at www.oralb.com or call (please see page 2).

Guarantee

We grant 2 years guarantee on the product commencing on the date of purchase. Within the guarantee period we will eliminate, free of charge, any defects in the appliance resulting from faults in materials or workmanship, either by repairing or replacing the complete appliance as we may choose.

This guarantee extends to every country where this appliance is supplied by Braun or its appointed distributor.

This guarantee does not cover: damage due to improper use, normal wear especially regarding the brushheads or use as well as defects that have a negligible effect on the value or operation of the appliance. The guarantee becomes void if repairs are undertaken by unauthorised persons and if original Braun parts are not used.

To obtain service within the guarantee period, hand in or send the complete appliance with your sales receipt to an authorised Braun Customer Service Centre.

For UK only:

This guarantee in no way affects your rights under statutory law.