

Oral-B®

AdvancePower Bright

D 9511



powered by **BRAUN**

Type 4728

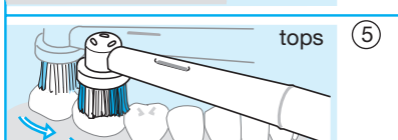
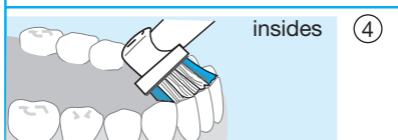
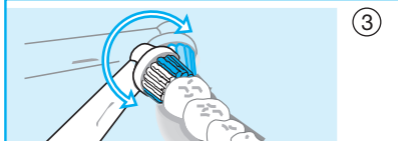
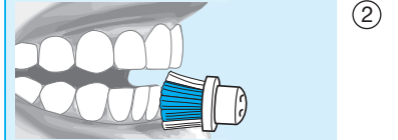
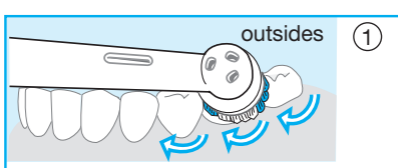
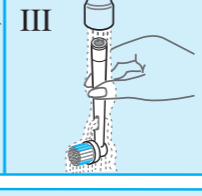
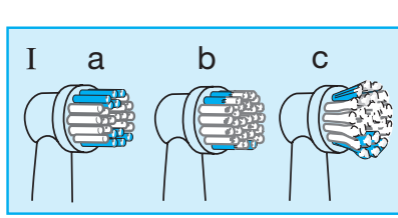
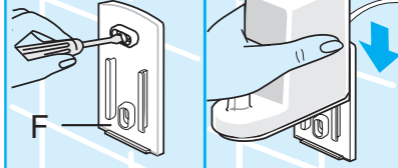
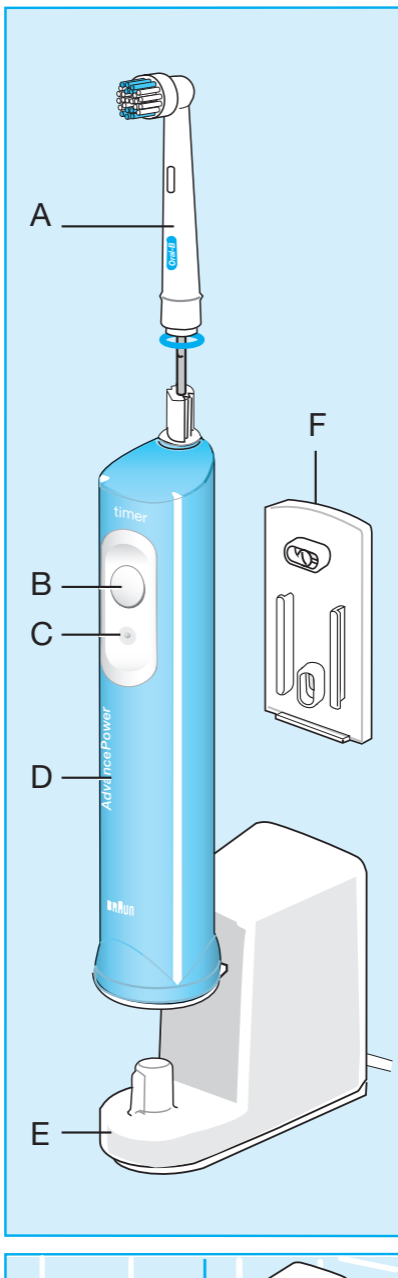
English	3, 19, 23
Français	4, 19, 23
Español	5, 19, 23
Português	6, 19, 23
Polski	7, 20, 23
Český	8, 20, 23
Slovenský	9, 21, 23
Magyar	10, 21, 23
Türkçe	11, 23
Русский	12, 21, 23
Українська	13, 22, 23
عربي	18, 17, 23



Braun Infoline

- (E)** Servicio al consumidor para España:
901 11 61 84
- (P)** Serviço ao Consumidor para Portugal:
808 20 00 33
- (B)** Vous avez des questions sur ce produit ?
Appelez Braun Belgique
(02) 711 92 11
- (TR)** Müşteri Hizmetleri Merkezi:
0212 - 473 75 85
- (RUS)** Если у Вас есть вопросы по поводу данного продукта, звоните
(095) 258 62 70

Internet:
www.oralb.com
www.braun.com



English

The Oral-B AdvancePower has been developed together with leading dental professionals to effectively remove plaque from all areas of your teeth. It has been designed for daily use for the whole family.

Please read the use instructions carefully before first use.

Important

Periodically check the cord for damage. Should this be the case, take the charging unit (E) to a Braun Service Centre. A damaged or non-functioning unit should no longer be used.

Description

- A Brushhead
- B On switch
- C Off switch
- D Handle
- E Charging unit
- F Wall holder

Specifications

Power supply: see bottom of charging unit

Handle voltage: 1.2 V

Connecting and charging

The appliance is electrically safe and can be used in the bathroom without hesitation.

- Plug the charging unit into an electrical outlet. Place the handle on the charging unit. Handle must be switched off.
- A full charge takes 16 hours and will provide an operation time of approx. 20 minutes.
- For everyday use, the handle can be stored on the plugged-in charging unit to maintain the toothbrush at full power. Overcharging is impossible.

Battery maintenance

To maintain the maximum capacity of the rechargeable battery, unplug the charging unit and discharge the handle by regular use at least every 6 months.

Using the toothbrush

The toothbrush can be used with any leading brand of toothpaste.

- To avoid splashing, guide the brushhead to your teeth before switching the appliance on.
- Slowly guide the brushhead from tooth to tooth, spending a few seconds on each tooth surface.
- Brush the gums as well as the teeth, first the outsides, then the insides and finally the chewing surfaces.
- Do not press too hard or scrub, simply let the brush do all the work.
- To thoroughly remove plaque, brush for at least two minutes.

Timer

An incorporated timer memorises the elapsed brushing time. After two minutes the timer signals by a short stutter.



During the first days of using the toothbrush, your gums may bleed slightly. In general, bleeding should stop after a few days. Should it persist after two weeks, please consult your dentist or hygienist.

Dentists recommend that you replace any toothbrush every 3 months, since worn bristles do not remove plaque as effectively as new ones. Therefore, the brushhead is provided with INDICATOR® bristles (I.a). With proper brushing twice a day for two minutes, the colour will disappear halfway down the bristles in a 3-month period, provided you use toothpaste (I.b). If the bristles splay before the colour recedes (I.c), you are exerting too much pressure on teeth and gums.

Replacement brushheads

Available at your retail store or Braun Service Centres.

Cleaning

After use, rinse the brushhead for several seconds under running water with the handle switched on (II). Then switch off the handle and take off the brushhead. Rinse both parts separately under running water (III) and wipe them dry.

From time to time, also clean the charging unit with a damp cloth (IV).

Environmental notice

This product contains nickel-cadmium rechargeable batteries. In the interest of protecting the environment, do not dispose of the product in the household waste at the end of its useful life. Disposal can take place at a Braun Service Centre.



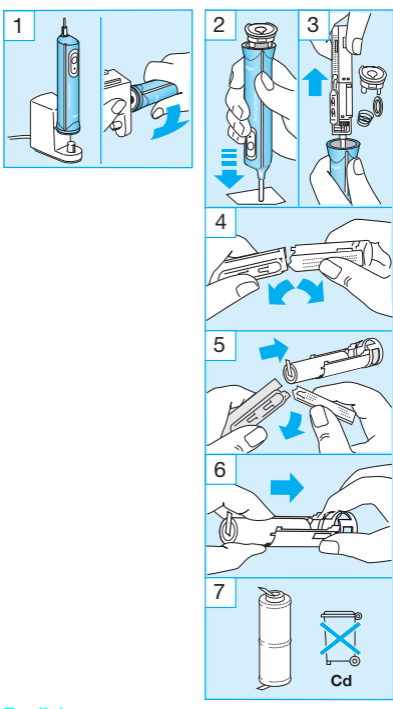
However, if you prefer to dispose of the battery yourself, please refer to the section «Battery removal» (page 16).

Subject to change without notice.

This product conforms to the EMC-Directive 89/336/EEC and to the Low Voltage Regulation 73/23 EEC.



At the end of the product's useful life, please dispose of it at appropriate collection points provided in your country.



English

Battery removal at the end of the product's useful life

Open the handle as shown, remove the battery and dispose of it according to local environmental regulations.

Caution: Opening the handle will destroy the appliance and invalidate the guarantee.

Français

Retrait des batteries à la fin de la durée de vie du produit

Ouvrir le corps de brosse comme indiqué, retirer les batteries et les mettre au rebut, conformément à la réglementation sur l'environnement.

Attention : en ouvrant l'appareil, vous le détruisez et la garantie est invalidée.

Español

Extracción de baterías al final de la vida útil del producto

Abra el aparato como se muestra, extraiga la batería y deshágase de ella de acuerdo con las regulaciones locales de protección medio-ambiental y reciclaje de materias primas.

Atención: La apertura del cuerpo del aparato supone su destrucción. La garantía no tendrá validez para el caso de aparatos con el cuerpo abierto.

Português

Remoção da bateria no final da vida útil do aparelho

Abra o corpo da escova como indicado, retire a bateria e descarte-a de acordo com a regulamentação ambiental local.

Atenção: A abertura do corpo destrói o aparelho e invalida a garantia.

Polski

Wyjmowanie zużytego akumulatora

Otworzyć dolną część bloku napędowego, tak jak to przedstawiono na rysunku, a następnie wyjąć akumulator. Ze zużytymi akumulatorami należy postępować zgodnie z obowiązującymi przepisami ochrony środowiska.

Uwaga: W wyniku otwarcia urządzenie ulega zniszczeniu. Uszkodzenia spowodowane otwarciem urządzenia nie są objęte gwarancją.

Český

Vyjmutí baterie na konci životnosti výrobku

Podle obrázku otevřete držadlo, vyjměte baterii a odevzdejte ji do sběrný dle místních předpisů.

Upozornění: Otevřením držadla se přístroj zničí a zruší se tím nárok na záruku.

Slovenský

Vybratie akumulatorovej batérie po skončení životnosti výrobku

Otvorte držadlo podľa obrázku, vyberte batériu a odovzdajte ju do príslušnej zberne podľa miestnych predpisov na ochranu životného prostredia.

Upozornenie: Otvorením držadla sa prístroj zničí a zruší sa tým nárok na záruku.

Magyar

Akkumulátor eltávolítása élettartalma végén

Nyissa ki a nyelet a mellékelt ábra szerint, és helyezze el az akkumulátort a környezetvédelmi előírásoknak megfelelő hulladéktárolóban.

Figyelem: A markolat felnyitása használhatatlanná teszi a készüléket és érvényteleníti a jótállást.

Türkçe

Cihazın ömrü bittiğinde pili çıkarma

Diş fırçanızın gövdesini şekilde görüldüğü gibi açarak pili çıkarınız. Yeniden dönüşüm için pili evinizdeki çöpe atmak yerine en yakın Braun servis istasyonuna veya satış noktasına gönderiniz.

Dikkat: Gövdesi açılmış cihaz garanti kapsamı dışındadır.

Русский

Удаление батарей в конце жизненного цикла изделия

Откройте рукоятку, как показано на рисунке, выньте батарею и выбросите ее в то место, которое определено местными правилами защиты окружающей среды.

Предупреждение: Открытие рукоятки приводит к разрушению электроприбора. При этом гарантия становится недействительной.

Українська

Як вийняти акумулятор після закінчення його терміну служби

Відкрийте ручку як показано, вийміть акумулятор й утилізуйте його у відповідності до місцевих положень і правил.

Увага! Відкривання ручки призведе до руйнування пристрою і зробить недійсною гарантію.

عربي

إزالة البطارية عند نهاية الحياة العملية للجهاز.

إفتح المقبض كما هو موضح أزل البطارية وتخلص

متها حسب الأنظمة البيئية المحلية.

تحذير إن فتح الجهاز يؤدي الى تلفه ويبطل

مفعول الضمان.

English

Guarantee

We grant 2 years guarantee on the product commencing on the date of purchase.

Within the guarantee period we will eliminate, free of charge, any defects in the appliance resulting from faults in materials or workmanship, either by repairing or replacing the complete appliance as we may choose.

This guarantee extends to every country where this appliance is supplied by Braun or its appointed distributor.

This guarantee does not cover: damage due to improper use, normal wear or use as well as defects that have a negligible effect on the value or operation of the appliance. The guarantee becomes void if repairs are undertaken by unauthorised persons and if original Braun parts are not used.

To obtain service within the guarantee period, hand in or send the complete appliance with your sales receipt to an authorised Braun Customer Service Centre.

For UK only:

This guarantee in no way affects your rights under statutory law.

Français

Garantie

Nous accordons une garantie de 2 ans sur ce produit, à partir de la date d'achat.

Pendant la durée de la garantie, Braun prendra gratuitement à sa charge la réparation des vices de fabrication ou de matière en se réservant le droit de décider si certaines pièces doivent être réparées ou si l'appareil lui-même doit être échangé.

Cette garantie s'étend à tous les pays où cet appareil est commercialisé par Braun ou son distributeur exclusif.

Cette garantie ne couvre pas : les dommages occasionnés par une utilisation inadéquate et l'usure normale. Cette garantie devient caduque si des réparations ont été effectuées par des personnes non agréées par Braun et si des pièces de rechange ne provenant pas de Braun ont été utilisées.

Pour toute réclamation intervenant pendant la période de garantie, retournez ou rappelez l'appareil ainsi que l'attestation de garantie à votre revendeur ou à un Centre Service Agréé Braun.

Appelez au 01.47.48.70.00 pour connaître le Centre Service Agréé Braun le plus proche de chez vous.

Clause spéciale pour la France

Outre la garantie contractuelle exposée ci-dessus, nos clients bénéficient de la garantie légale des vices cachés prévue aux articles 1641 et suivants du Code civil.