

BRAUN *design collection*

WK 600



Impression

Type 3214

www.braun.com/register

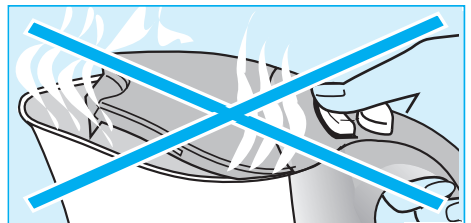
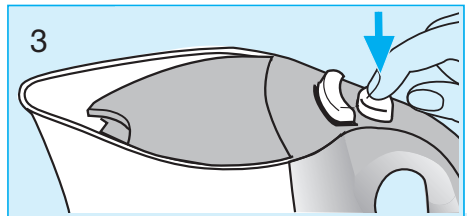
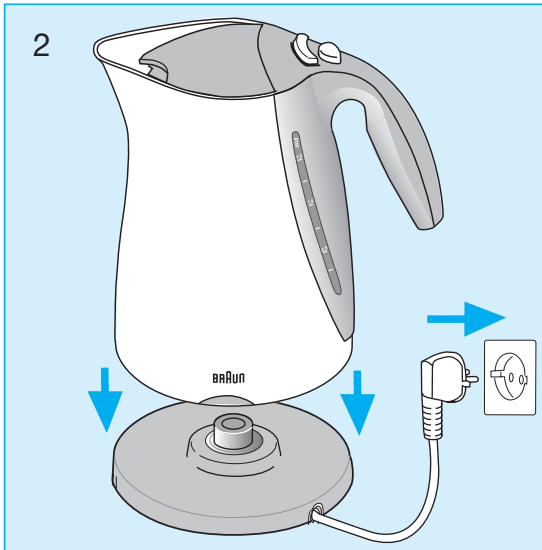
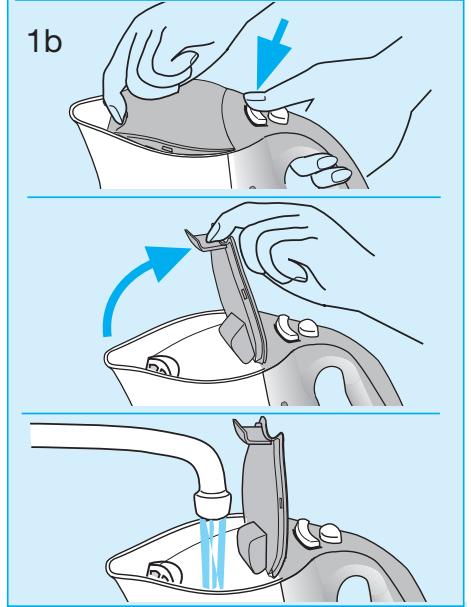
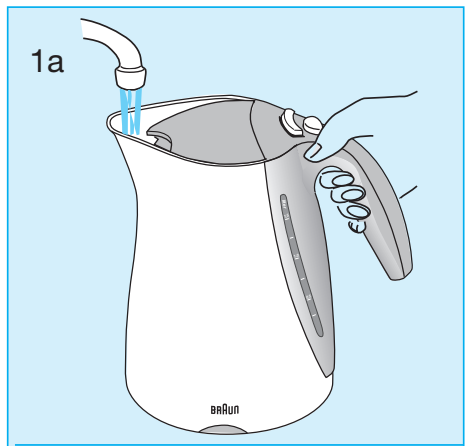
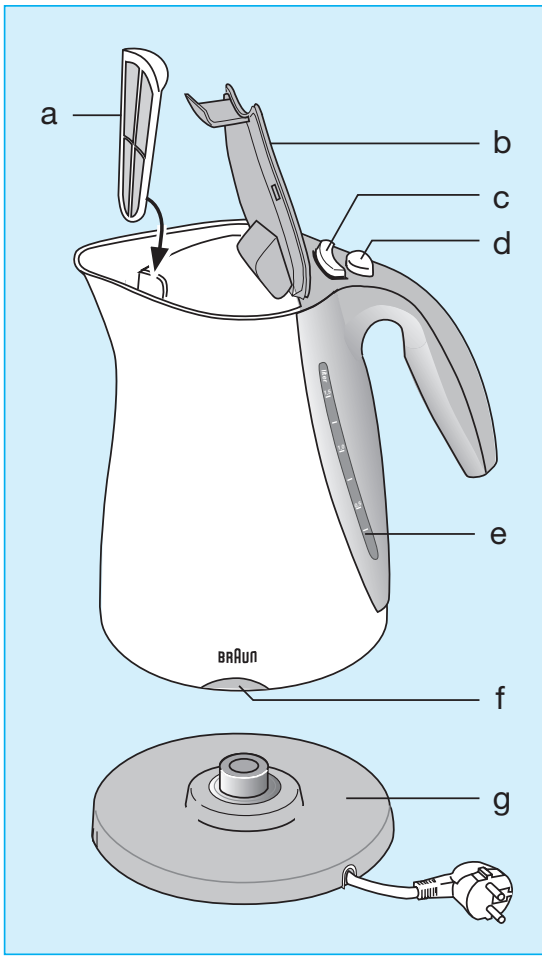
3-214-350/01/IX-03/G2
D/GB/F/E/P/I/NL/DK/N/S/FIN/
PL/CZ/SK/H/TR/GR/RUS/Arab



Braun Infoline

Deutsch	4, 5, 37
English	5, 6, 37
Français	7, 8, 37
Español	9, 10, 37
Português	11, 12, 37
Italiano	13, 14, 37
Nederlands	14, 15, 37
Dansk	16, 17, 37
Norsk	17, 18, 37
Svenska	19, 20, 37
Suomi	20, 21, 37
Polski	22, 23, 37
Český	24, 25, 37
Slovenský	25, 26, 37
Magyar	27, 28, 37
Türkçe	28, , 37
Ελληνικά	30, 31, 37
Русский	31, 33, 37
عربي	36, 34, 37

- (D)** Haben Sie Fragen zu diesem Produkt?
- (A)** Rufen Sie an (gebührenfrei):
00 800 27 28 64 63
00 800 BRAUNINFOLINE
- (CH)** **08 44 - 88 40 10**
- (E)** Servicio al consumidor para España:
901-11 61 84
- (P)** Serviço ao Consumidor para Portugal:
808 20 00 33
- (I)** Servizio consumatori:
(02) 6 67 86 23
- (NL)** Heeft u vragen over dit produkt?
Bel Braun Consumenten-infolijn:
(070) 4 13 16 58
- (B)** Vous avez des questions sur ce produit ?
Appelez Braun Belgique
(02) 711 92 11
- (DK)** Har du spørgsmål om produktet? Så ring
70 15 00 13
- (N)** Spørsmål om dette produktet? Ring
88 02 55 03
- (S)** Frågor om apparaten? Ring Kundservice
020 - 21 33 21
- (FIN)** Onko Sinulla kysyttävää tuotteesta? Soita
0203 77877
- (TR)** Müşteri Hizmetleri Merkezi:
0212 - 473 75 85
- (RUS)** Если у Вас есть вопросы по поводу данного продукта, звоните
(095) 258 62 70



English

nicht aufkochen, da diese herauspritzen kann:
Verbrühungsgefahr!

- Lassen Sie das Essigwasser über Nacht im Gerät stehen.
- Leeren Sie den Wasserkocher am nächsten Tag und spülen ihn mit klarem Wasser aus. Füllen Sie den Wasserkocher mit klarem Wasser und lassen Sie es kochen.
- Leeren Sie den Wasserkocher und spülen Sie ihn nochmals mit klarem Wasser aus.
- Bleiben Rückstände von Kesselstein übrig, so wiederholen Sie den Vorgang.
- Auch der Kalkfilter kann zum Entkalken in Essigwasser getränkt werden.

Änderungen vorbehalten.

Dieses Gerät entspricht der EMV-Richtlinie 89/336/EWG sowie der Niederspannungsrichtlinie (73/23 EWG).



Garantie

Als Hersteller übernehmen wir für dieses Gerät – nach Wahl des Käufers zusätzlich zu den gesetzlichen Gewährleistungsansprüchen gegen den Verkäufer – eine Garantie von 2 Jahren ab Kaufdatum. Innerhalb dieser Garantiezeit beseitigen wir nach unserer Wahl durch Reparatur oder Austausch des Gerätes unentgeltlich alle Mängel, die auf Material- oder Herstellungsfehlern beruhen. Die Garantie kann in allen Ländern in Anspruch genommen werden, in denen dieses Braun Gerät von uns autorisiert verkauft wird.

Von der Garantie sind ausgenommen: Schäden durch unsachgemäßen Gebrauch, normaler Verschleiß und Verbrauch sowie Mängel, die den Wert oder die Gebrauchstauglichkeit des Gerätes nur unerheblich beeinflussen. Bei Eingriffen durch nicht von uns autorisierte Braun Kundendienstpartner sowie bei Verwendung anderer als Original Braun Ersatzteile erlischt die Garantie.

Im Garantiefall senden Sie das Gerät mit Kaufbeleg bitte an einen autorisierten Braun Kundendienstpartner. Die Anschrift für Deutschland können Sie kostenlos unter 00800/27 28 64 63 erfragen.

Thank you for purchasing a Braun Impression water kettle. We hope that the design and the rapid boil feature give you many years of pleasure.

Before first use, read the use instructions carefully and keep them for future reference.

Important

- Before plugging into a socket, make sure that your voltage corresponds to the voltage printed on the bottom of the kettle. The kettle may only be operated on the base (g) supplied.
- This appliance is intended for household use only.
- Only use the kettle to heat water.
- Only operate the kettle on a dry, flat and fixed surface.
- Never let the cord hang down from the worktop. Winding it up with the cord storage facility may reduce the cord length.
- Keep the appliance out of reach of children.
- Caution: During and after operation, never touch the metal surfaces of the kettle as they will get hot and may cause burns and scalds. Only use the handle to carry it. Always hold the kettle in an upright position, to avoid boiling water come out.
- The base, the kettle or the cord must never get in contact with hot surfaces (e. g. stove plates).
- In case the empty kettle is switched on accidentally, the overheating protection will cut it off automatically. In this case, allow the kettle 10 minutes to cool down before filling it with water.
- Caution: Do not overfill the kettle! Water could boil over causing scalds.
- Do not open the lid while water is boiling.
- Check the cord regularly for possible damage.
- If the appliance shows any defect, stop using it and take it to a Braun Service Centre for repair. Faulty or unqualified repair work may cause accidents or injury to the user.
- Braun electric appliances meet applicable safety standards.

Description

- a Scale filter (removable)
- b Lid
- c Lid release button
- d On/off switch
- e Water level indicator
- f Pilot light
- g Base with cord storage

Max. capacity: 1.7 l water

Before first use

Before using the kettle for the first time, fill it up twice with water to the maximum level and bring it to boil. Empty the kettle after boiling each time.

Setting into operation

- 1a Fill the kettle through the spout with the lid closed, or:
1b Press the lid release button (c), open the lid, fill with water and close the lid again (due to safety reasons the kettle will not work with the lid open).
- 2 Place the kettle on the dry base and plug in the base.
- 3 Press the on/off switch (d), the pilot light will come on (do not open the lid when the kettle is switched on).
- 4 When the water has boiled, the kettle automatically switches off.

You may also stop the heating procedure at any time by pressing the on/off switch (d).

Automatic cut-off feature

The kettle switches off when ...

- the water has boiled,
- it contains no water (in case of accidental switching on),
- the lid is opened,
- it is taken off the base.

If the scale filter is not installed, the automatic cut-off will be delayed.

Cleaning

- Always unplug the appliance and allow cooling down before cleaning.
- Never clean the appliance under running water, nor immerse it in water. Clean the exterior surfaces of the kettle with a damp cloth only. Small amounts of dish-washing liquids may be used. Do not use steel wool or abrasive cleaners. Never use any solvents such as alcohol, gasoline or benzene.
- The removable scale filter can be cleaned with a soft brush; do not use a metal brush. The scale filter is dishwasher-proof.

Descaling

- In order to extend the lifetime of the kettle, it should be descaled regularly.
- Boil 0.8 l water in the kettle.
- Important: Switch off the kettle and add 0.4 l household vinegar (4-5% acid). Do not boil the contents as it may cause spilling being a danger of scalding.
- Let the mix of water and vinegar sit in the kettle overnight.
- Empty the kettle and rinse the inside thoroughly with fresh water. Fill the kettle with fresh water and boil it.
- Empty the kettle and rinse it again with fresh water.
- If the kettle still contains scale, repeat this procedure.
- To remove any scale from the scale filter, you may soak it in diluted vinegar.

Subject to change without notice.

This product conforms to the EMC-Directive 89/336/EEC and to the Low Voltage Regulation (73/23 EEC).



Guarantee

We grant 2 years guarantee on the product commencing on the date of purchase. Within the guarantee period we will eliminate, free of charge, any defects in the appliance resulting from faults in materials or workmanship, either by repairing or replacing the complete appliance as we may choose.

This guarantee extends to every country where this appliance is supplied by Braun or its appointed distributor.

This guarantee does not cover: damage due to improper use, normal wear or use as well as defects that have a negligible effect on the value or operation of the appliance. The guarantee becomes void if repairs are undertaken by unauthorised persons and if original Braun parts are not used.

To obtain service within the guarantee period, hand in or send the complete appliance with your sales receipt to an authorised Braun Customer Service Centre.

For UK only:

This guarantee in no way affects your rights under statutory law.