

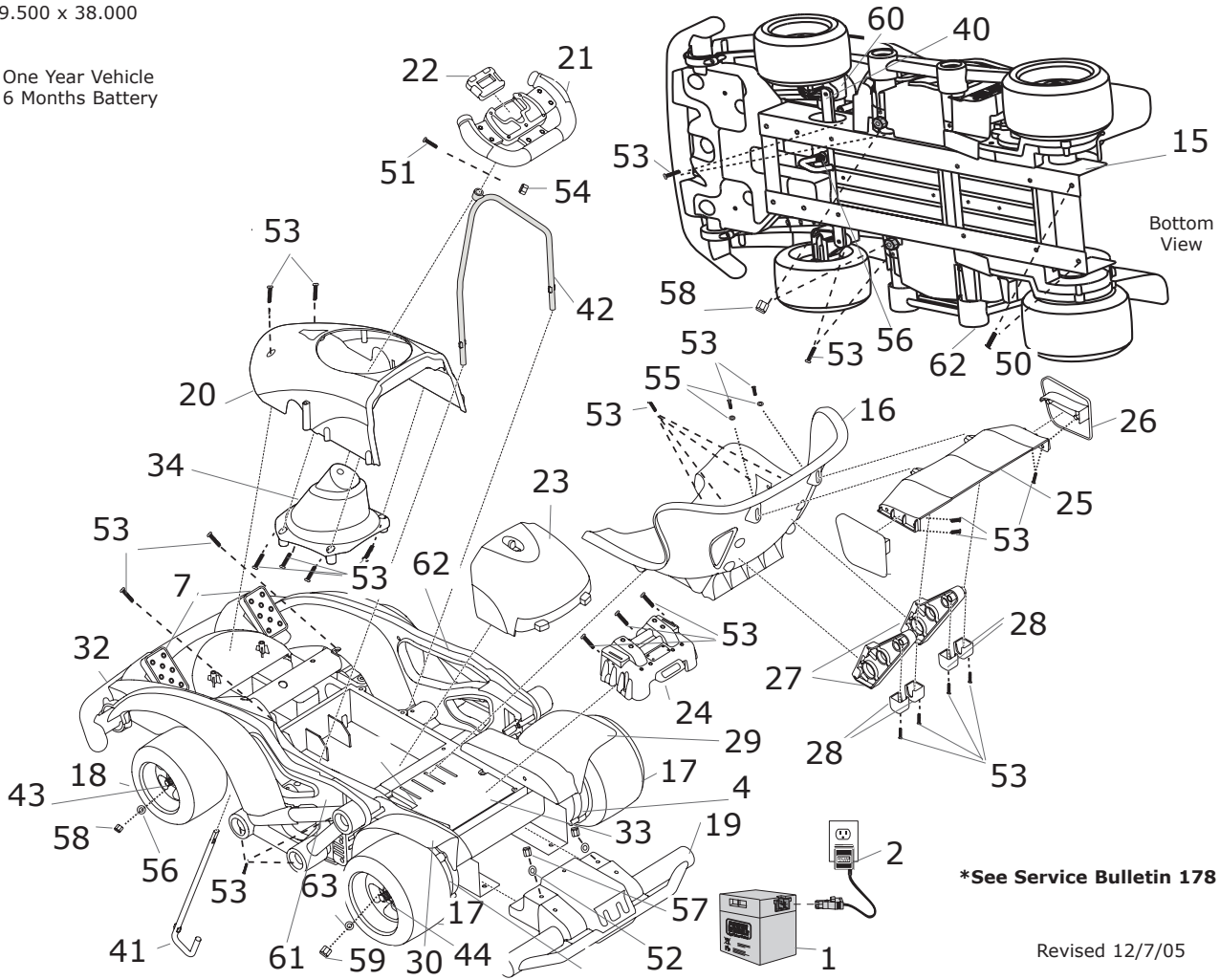
Age Range: 5 and up
Weight Limit: 120 lbs
Surfaces: Hard
Surfaces
 Speed: 7 MPH Forward
 Colors: Blue Body/Red Seat
 Intro: 2004
 Suggested Retail: 199.99
 Box Dimensions:
 20.875 x 9.500 x 38.000
 42 lbs
 Warranty

One Year Vehicle
 6 Months Battery



C0530 Rally Kart

Performance Series 12V



*See Service Bulletin 178

Revised 12/7/05

Item No.	Description	Part No.	Qty.	Item	Part	No.	Description	No.
Working / Electrical Parts								
1.	12V Battery	00801-1048	1			61.	Rail Left	C0530-2349 1
2.	12V Charger	00801-0972	1			62.	Rail Right	C0530-2289 1
3.	Left Motor Grbox Assy. N/A00968-4900		1			63.	Rear Bearing Washer	00801-1300 4
4.	Right Motor Grbox Assy. N/A00968-4901		1			Hardware / Metal Parts		
6.	Main Harness Assembly C0532-9799		1			40.	Steering Linkage Assy.	C0532-9089 1
7.	Footboard Assembly C0530-9229		1			41.	*Steering Column	C0532-9099 1
Plastic / Other Parts						42.	Steering Tube	C0532-4089 1
15.	Frame	N/A	1			43.	Front Axle	C0532-4519 2
16.	Seat	C0530-2309	1			44.	Rear Axle	C0532-4539 1
17.	Rear Wheel	C0530-6129	2			50.	1/4-20 x 3 Screw N/A (Order Hardware Bag)	2
18.	Front Wheel	C0530-6139	2			51.	#8-32 x 7/8 Screw N/A (Order Hardware Bag)	00913-1027 1
19.	Rear Bumper	C0532-2379	1			52.	1/4" Washer N/A (Order Hardware Bag)	00801-1337 2
20.	Cowling	C0530-2219	1			53.	#8 x 3/4 Screw	00912-8001 35
21.	*Steering Wheel Assembly	C0532-9409	1			54.	#8 x 32 Lock Nut N/A (Order Hardware Bag)	4
22.	Stopwatch	C0532-9529	1			55.	3/16 Washer N/A (Order Hardware Bag)	2
23.	Battery Cover (Clamp)	C0530-9369	1			56.	.375 Front Bearing Washer	00801-1335 1
24.	Pretend Motor	C0532-2319	1			57.	1/4"-20 Lock Nut N/A (Order Hardware Bag)	2
25.	Wing	C0530-2389	1			58.	3/8-16 Lock Nut	00905-0116 4
26.	Flap (Left & Right Bagged)	C0530-9029	1			59.	1/2-13 Lock Nut	00905-0115 2
27.	Strut (Left & Right-Bagged)	C0530-9019	1			60.	Front Axle Support	C0532-2069 2
28.	Cap (Wing Retainer)	C0532-2459	4			Parts Not Shown		
29.	Right Rear Fender	C0530-2179	1			Hardware Bag	C0530-9269	1
30.	Left Rear Fender	C0530-2189	1			**Owners Manual	C0530-0920	1
32.	Front Bumper	C0530-2209	1			Decal Sheet	C0530-0330	1
						Hot Wheels Racing Guide	C0530-0300	1
						Stencil/Pylon Sheet	C0530-2019	1
						Chalk	C0530-9039	2
						Footswitch (Plunger Type)	00801-0933	1
						PC Board	C0532-9539	1
						Front Bearing Washer	00801-1335	6
						Front Wheel Spacer	C0532-4629	2
						Front Axle Bearing	C0532-4529	4
						Rear Wheel Spacer	C0532-4639	2
						Rear Axle Drive Spacer	C0532-4549	2
						Rear Axle Bearing	C0532-4559	4
						Rear Axle Bushing	C0532-2149	2
						Additional Seat Screws	00912-8001	6
						Gearbox W/out Motor	00968-4800	2
						Motor Harness	C0532-9699	2
						Thick 1/2 Washer N/A	00801-1408	2
						8-32 x 1.5 Machine Screw N/A	00801-1333	4
						Left Motor Pinion	00968-4704D	2
						Right Motor Pinion	00968-4705D	2

N/A = Not Available **Bold and Underlined parts are to be purchased and installed by Service Centers only. These items may not be sold directly to consumers by Service Centers or Fisher-Price. **Service Centers: Please refer to the service bulletin titled C0530_C0532Instruct regarding part discrepancy in manual.**