

Age Range: 1-3 Yrs.  
 Weight Limit: 40 Lbs.  
 Surfaces: Hard, Grass & Carpet  
 Speed: 1 MPH  
 Intro: 1991  
 Warranty: 90 Days Vehicle  
 6 Months Battery

# 76092-9993 / 83655

## SWEET PEA®

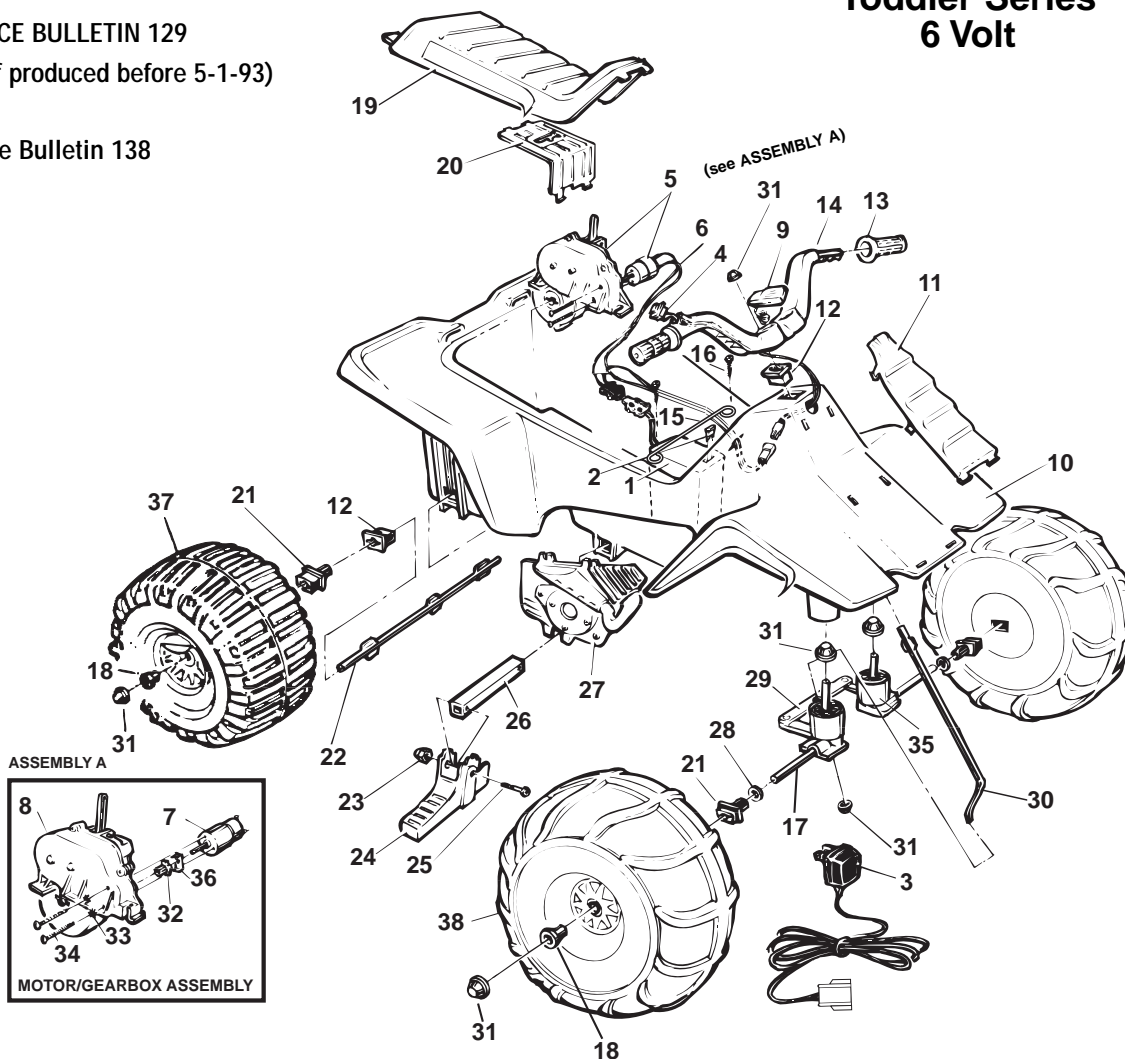
(6091 Refresh)

### Toddler Series 6 Volt

SERVICE BULLETIN 129

(If produced before 5-1-93)

Service Bulletin 138



REV. 09/04/03

Item No.	Description	Part No.	Qty.	Item No.	Description	Part No.	Qty.	Item No.	Description	Part No.	Qty.
1	**Battery 6 Volt	00801-1234	1	17	* Front Axle	74504-4509	2	32	Motor Drive Gear N/A	74504-2259	1
2	25 Amp Fuse	0801-0151	1	18	Wheel Bushing	78560-2679	4	33	Star Washer N/A	0801-0330	2
3	**6-Volt Charger	00801-0975	1	19	Seat N/A	80067-0009	1	34	Motor Bolt	0801-0269	2
4	**Switch Assembly	78560-9799	1	20	Motor Cover	73560-9489	1	35	Front Post Bushing N/A	76092--2549	2
5	#5 Motor/Gearbox Assy	74504-9519	1	21	* Bushing w/Long Extension	78560-2659	4	36	D Lock Washer	0801-0329	1
6	**Wiring Harness (main)	<b>73560-9799</b>	1	22	Rear Axle	74504-4539	1	37	Rear Wheel N/A	80062-0023	2
7	Motor w/ Pinion	<b>74590-9539</b>	2	23	Acorn Nut N/A	0801-0218	2	38	Front Wheel N/A	80062-0024	2
8	#5 Gearbox	<b>72629-9259</b>	1	24	Footpeg N/A	76940-2169	2	<b>PARTS NOT SHOWN</b>			
9	Microphone (Yellow)	74550-9479	1	25	1-1/4" Shoulder Bolt	0801-0304	2		Tassels N/A	73680-2129	2
10	Body N/A	80005-0203	1	26	Footpeg Support	76940-2179	1		Decal Sheet N/A	80017-0114	1
11	Grill N/A	80065-0013	1	27	False Motor Set N/A	80021-0012	1		Literature Bag N/A	80034-0465	1
12	* Bushing w/o Extension	74504-2549	2	28	5/16" Washer	0801-0253	2				
13	Handgrips (Yellow)	74504-2219	2	29	Steering Linkage	74504-4219	1				
14	Handlebar/Switch Assy N/A	80029-0019	1	30	* Steering Column	80054-0046	1				
15	Battery Retainer	74504-4429	1		Subs to -	76940-4239	1				
16	#8 x 7/8" Trusshead Screw	0801-0228	2	31	.354 Cap Nut (White)	0801-0548	8				

\*See Service Bulletin 129 if produced before 5-1-93.

\*\*See Service Bulletin 138 **Bold and Underlined parts are to be purchased and installed by Service Centers only. These items may not be sold directly to consumers by Service Centers or Fisher-Price.**

