

Age Range: 1-3 Yrs.  
 Weight Limit: 40 Lbs.  
 Surfaces: Hard, Grass & Carpet  
 Speed: 1 MPH  
 Colors: White Body  
 Pink Wheels, Seat & Handlebars  
 Yellow Trim

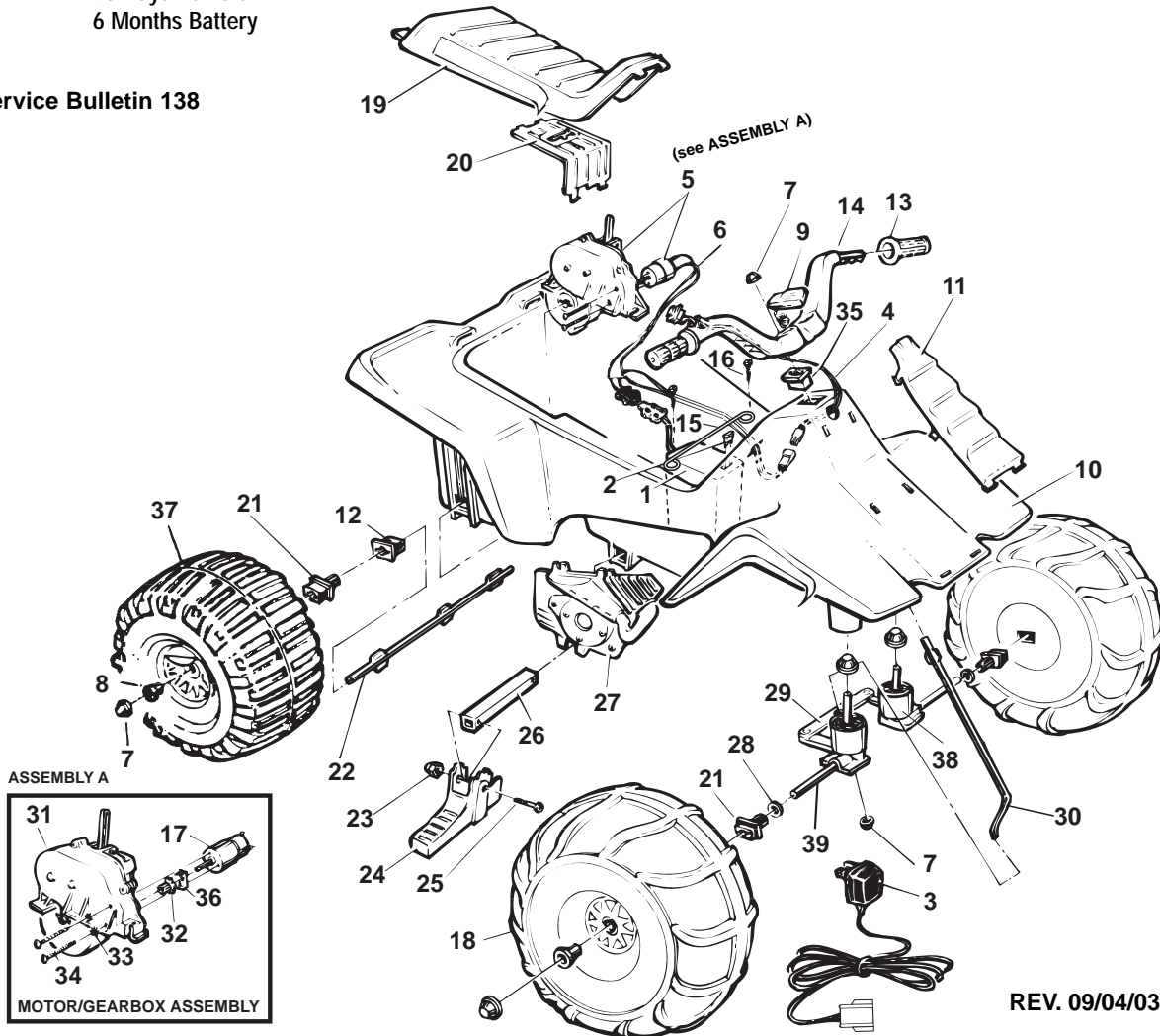
Avail: 1987 - 1990  
 Warranty: 90 Days Vehicle  
 6 Months Battery

# 76091-9993 / 83650

## SWEET PEA®

6 Volt

See Service Bulletin 138



REV. 09/04/03

Item No.	Description	Part No.	Qty.	Item No.	Description	Part No.	Qty.	Item No.	Description	Part No.	Qty.
1	** Battery 6 Volt (Type H)	00801-1234	1	18	Front Wheels N/A	80062-0020	2	36	D Lock Washer	0801-0329	1
2	25 Amp Fuse Kit	0801-0151	1	19	Seat N/A	80067-0071	1	37	*** Rear Wheel (NLA)	800862-0015	2
3	** 6-Volt Charger	00801-0976	1	20	Motor Cover	73560-9489	1	<i>(can use 73670-2459 Pink Mermaid Barbie Wheel)</i>			
4	Switch Assm	78560-9799	1	21	Bushing w/Long Extension	78560-2659	2	38	Front Post Bushing N/A	80009-0086	2
5	#5 Motor/Gearbox Assy (Include. # 32, 33, 34 and 36)	74504-9519	1	22	Rear Axle	74504-4539	1	39	Front Axle N/A	80025-0057	2
<b>6</b>	<b>**Wiring Harness</b>	<b>74504-9059</b>	<b>1</b>	23	Acorn Nut N/A	0801-0218	2	<b>PARTS NOT SHOWN</b>			
7	.354 Cap Nut	0801-0251	6	24	Footpeg N/A	80023-0146	2	Tassels 73680-2129 2			
8	Wheel Bushing	78560-2679	4	25	1-1/4" Shoulder Bolt	0801-0304	2	Decal Sheet N/A 80017-0416 1			
9	Microphone	74550-9479	1	26	Footpeg Support	76940-2129	1	Retainer Clip N/A 80001-0096 2			
10	Body N/A	80005-0203	1	27	False Motor Set N/A	80021-0012	1	Literature Bag N/A 80034-0459 1			
11	Grill N/A	80065-0051	1	28	5/16" Washer	0801-0253	2	Use & Care Manual N/A 76091-CCCC 1			
12	Bushing w/o Extension	74504-2549	2	29	Steering Linkage	74504-4219	1				
13	Handgrips (Yellow)	74504-2219	2	30	Steering Column	76940-4239	1				
14	Handlebar/Switch Assy N/A	80029-0019	1	<b>31</b>	<b>#5 Gearbox</b>	<b>72629-9259</b>	<b>1</b>				
15	Battery Retainer	74504-4429	1	32	Motor Drive Gear N/A	74504-2259	1				
16	#8 x 7/8" Trusshead Screw	0801-0228	2	<b>33</b>	<b>Star Washer N/A</b>	<b>0801-0330</b>	<b>2</b>				
<b>17</b>	<b>Motor w/Pinion</b>	<b>74590-9539</b>	<b>1</b>	<b>34</b>	<b>Motor Bolt</b>	<b>0801-0269</b>	<b>2</b>				
				35	Bushing w/Short Extens. N/A	80009-0035	3				



\*\*See Service Bulletin 138

\*\*\* If made prior to 9-12-89, replace both rear wheels

**Bold and Underlined parts are to be purchased and installed by Service Centers only. These items may not be sold directly to consumers by Service Centers or Fisher-Price.**