

Service  
Service  
Service



Philips Domestic Appliances and Personal Care

# Service Manual

## PRODUCT INFORMATION

### General:

- Mains/rechargeable operation
- World-wide automatic voltage selection
- Electronic on/off switch
- Washable

### Safety information

- This product meets the requirements regarding interference suppression on radio and TV.
- After the product has been repaired, it should function properly and has to meet the safety requirements as officially laid down at this moment.

## TECHNICAL INFORMATION

- Voltage : 100 - 240 Volt / 50 - 60 Hz
- Motor voltage : 1,2 Volt
- Shaving heads : HQ8 - 4222 036 05820
- SAP coding : 7140XL

## DISASSEMBLY- AND RE-ASSEMBLY ADVICE

### Disassembly:

- Remove shaving unit, to prevent damaging during repairing.
- Remove the 2 screws (A) out of the hairchamber.
- Remove the hairchamber from the body.
- Remove the 2 screws (B) on the backside of the shaver.
- Remove the cover.
- Remove the side grips.
- Remove the housing by bending the hooks with a screwdriver.
- Take out the basic body.

## REPAIR INSTRUCTION

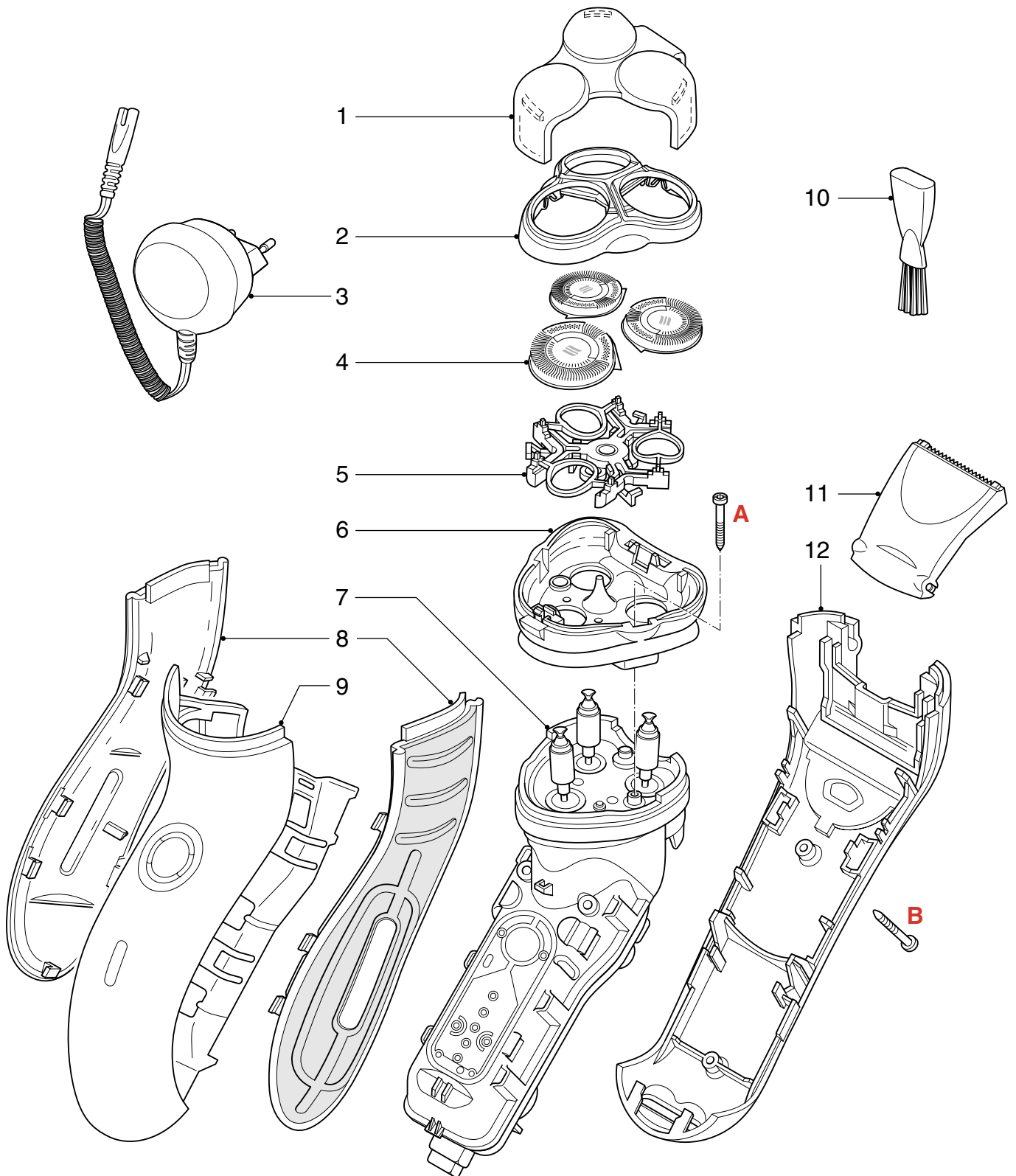
- No specific issues

## OPTIONAL (accessories)

- Car cord : 4222 036 08920

EXPLODED VIEW & PARTS LIST

7140XL



Pos	Service code	Description	
1	4222 036 12600	Protection cap	Cheetah
2	4222 036 12610	Bracket-assy	
3	4222 036 06790	Power plug	NOR
4	4222 036 05820	Shaving heads	
5	4222 036 11220	Holder-assy	
6	4222 036 12640	Hairchamber	

Pos	Service code	Description
7	4222 036 12800	Basic body
8	4222 036 12570	Grip left & right
9	4222 036 12850	Housing-assy
10	4222 036 02770	Brush
11	4222 036 12220	Trimmer assy
12	4222 036 12710	Back shell assy
	4222 036 11480	Screw