

BRAUN cruZer³

2865



Type 5733

www.braun.com/register



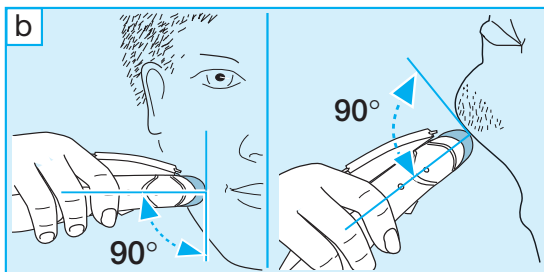
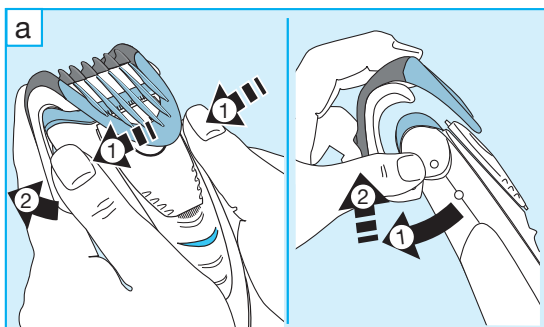
Braun Infoline

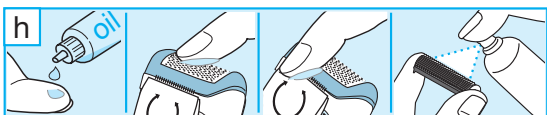
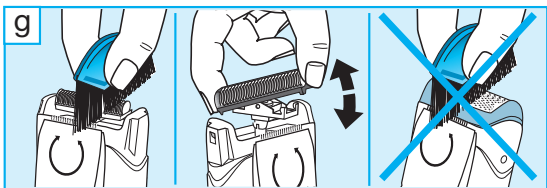
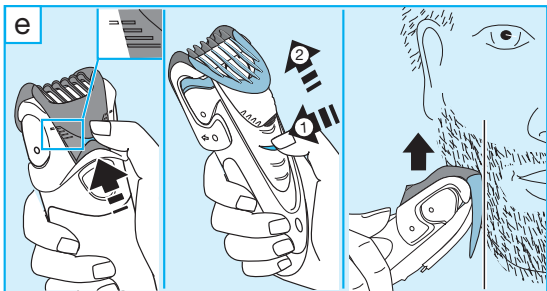
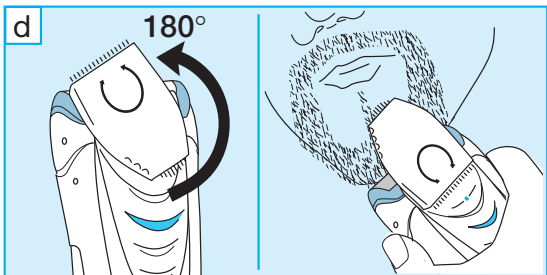
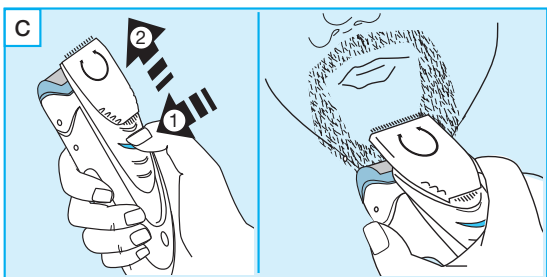
Deutsch	6, 48, 54
English	9, 48, 54
Français	12, 48, 54
Español	15, 49, 54
Português	18, 50, 54
Italiano	21, 50, 54
Nederlands	24, 51, 54
Dansk	27, 51, 54
Norsk	30, 51, 54
Svenska	33, 52, 54
Suomi	36, 52, 54
Türkçe	39 54
Ελληνικά	42, 53, 54

- (D)** Haben Sie Fragen zu diesem Produkt?
- (A)** Rufen Sie an (gebührenfrei):
00 800 27 28 64 63
00 800 BRAUNINFOLINE
- (CH)** **08 44 - 88 40 10**
- (E)** Servicio al consumidor para España:
901 11 61 84
- (P)** Serviço ao Consumidor para Portugal:
808 20 00 33
- (I)** Servizio consumatori:
(02) 6 67 86 23
- (NL)** Heeft u vragen over dit produkt? Bel Braun Consumenten-infolijn:
(070) 4 13 16 58
- (B)** Vous avez des questions sur ce produit ? Appelez Braun Belgique
(02) 711 92 11
- (DK)** Har du spørgsmål om produktet? Så ring
70 15 00 13
- (N)** Spørsmål om dette produktet? Ring
22 63 00 93
- (S)** Frågor om apparaten? Ring Kundservice
020 - 21 33 21
- (FIN)** Onko Sinulla kysyttävää tuotteesta? Soita
0203 77877
- (TR)** Müşteri Hizmetleri Merkezi:
0212 - 473 75 85

Internet:

www.braun.com





English

Our products are designed to meet the highest standards of quality, functionality and design. We hope you entirely enjoy your new Braun shaver.

Warning

Your shaver is provided with a special cord set with an integrated Safety Extra Low Voltage power supply. Do not exchange or manipulate any part of it. Otherwise there is risk of electric shock.

Description

- 1 Foil protection cap
- 2 Shaver foil
- 3 Cutter block
- 4 Styler
- 4a Wide shaper (28 mm)
- 4b Narrow shaper (14 mm)
- 5 Charging light
- 6 On/off switch
- 7 Trimming attachment
- 8 Beard length setting
- 9 Special cord set

Charging

The best environmental temperature for charging is between 15 °C and 35 °C.

- Using the special cord set, connect the shaver to an electrical outlet with the motor switched off.
- When charging for the first time, leave the shaver to charge continuously for 4 hours. The green charging light (5) shows that the shaver is being charged. When the battery is fully charged, the charging light intermittently blinks on and off. This indicates that the battery maintains its full capacity.
- A full charge provides 30 minutes of cordless shaving time depending on your beard growth.
- Once the shaver is completely charged, discharge the shaver through normal use. Then recharge to full capacity. Subsequent charges will take about 1 hour.
- Maximum battery capacity will only be reached after several charging/discharging cycles.
- If the rechargeable batteries are discharged, you may also shave by connecting the shaver to an electrical outlet via the special cord set.

Shaving

First, remove the trimming attachment: Using your thumbs, press against the side clips of the trimming attachment so that they swing off in the direction of the arrows (a).

Activate the on/off switch (6). The floating foil frame automatically adapts to your skin surface for a close, smooth shave.

For pre-shaving after a few days of not having shaved, use the wide shaper (4a) to pre-cut long hairs. For a close, smooth shave, finish with the foil.

Tips for the perfect shave

- We recommend that you shave before washing, as the skin tends to be slightly swollen after washing.
- Hold the shaver at right angles (90°) to the skin (b). Stretch the skin and shave against the direction of beard growth.
- To maintain 100% shaving performance, replace your foil and cutter block at least every 18 months or when worn.

This appliance may also be used in the shower. Before doing so, make sure that it is unplugged!

When using it in the shower, we recommend applying shaving foam or gel.

Using the styler

- The wide shaper (4a) evenly cuts and trims larger areas (c): Ideal for shaping sideburns, moustaches and partial short beards. Press the blue rib to push out the styler (4).
- The narrow shaper (4b) precisely defines lines and edges (d): Ideal for precise contouring. To use the narrow shaper, push out the styler and turn it 180°.
- Frequent use of the styler may reduce the battery capacity.

Using the trimming attachment

- The trimming attachment (7) is ideal for beard trimming and keeping it at a constant length.
- Place the trimming attachment onto the shaver foil (2) and press it against the shaver housing until it snaps into place with a click.
- Press the beard length selector (8) (e) and slide it up in order to set the desired beard length (length settings from top to bottom 1.2 mm, 2.8 mm, 4.4 mm, 6 mm). Push out the styler (4).
- Activate the on/off switch and trim against hair growth by guiding the blue transparent comb part over the skin.
- After use, pull back the styler. Remove the trimming attachment (a).

Cleaning

Always unplug the appliance before cleaning.

Regular cleaning ensures better shaving performance. Rinsing the shaving head after each shave under running water is an easy and fast way to keep it clean:

- Switch the shaver on (cordless) and rinse the shaving head under hot running water (f). A natural based soap may also be used provided it contains no particles or

abrasive substances. Rinse off all foam and let the shaver run for a few more seconds.

- Next, switch off the shaver, remove the shaver foil and the cutter block. Then leave the disassembled shaving parts to dry.

Alternatively, you may clean the shaver using the brush provided (g):

- Switch off the shaver. Remove the shaver foil.
- Using the brush, clean the cutter block and the inner area of the shaver head. However, do not clean the shaver foil with the brush as this may damage the foil.

Keeping your shaver in top shape

About every four weeks, clean the cutter block with Braun cleaning agents. Put a drop of light machine oil onto the shavers (4a, 4b) and the shaver foil (h).

Replacing the shaving parts

To maintain 100% shaving performance, replace your foil and cutter block at least every 18 months or when worn. Change both parts at the same time for a closer shave with less skin irritation.

(Shaver foil and cutter block: 2000 series)

Preserving the batteries

In order to maintain the optimum capacity of the rechargeable batteries, the shaver has to be fully discharged (by shaving) every 6 months approximately. Then recharge the shaver to full capacity. Do not expose the shaver to temperatures higher than 50 °C for extended periods of time.

Environmental notice

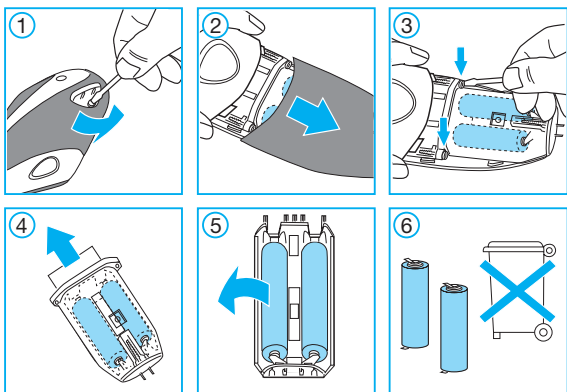
This appliance is provided with nickel-hydrate rechargeable batteries. To protect the environment, do not dispose of this appliance in the household waste at the end of its useful life. Open the housing as shown on page 46, remove and dispose of the batteries at your retail store or at appropriate collection sites according to national or local regulations.

Subject to change without notice.

This product conforms to the EMC-Directive 89/336/EEC and to the Low Voltage Regulation (73/23 EEC).



Electric specifications see printing on the special cord set.



Deutsch

Akku-Entsorgung am Ende der Lebensdauer des Gerätes

English

Battery removal at the end of the product's useful life

Français

Retrait des batteries à la fin de la durée de vie du produit

Español

Extracción de la pila al finalizar la vida útil del producto

Português

Remoção da bateria no fim da vida útil do produto

Italiano

Eliminazione delle batterie alla fine del ciclo di vita del prodotto

Deutsch

Garantie

Als Hersteller übernehmen wir für dieses Gerät – nach Wahl des Käufers zusätzlich zu den gesetzlichen Gewährleistungsansprüchen gegen den Verkäufer – eine Garantie von 2 Jahren ab Kaufdatum. Innerhalb dieser Garantiezeit beseitigen wir nach unserer Wahl durch Reparatur oder Austausch des Gerätes unentgeltlich alle Mängel, die auf Material- oder Herstellungsfehlern beruhen. Die Garantie kann in allen Ländern in Anspruch genommen werden, in denen dieses Braun Gerät von uns autorisiert verkauft wird.

Von der Garantie sind ausgenommen: Schäden durch unsachgemäßen Gebrauch (Knickstellen an der Scherfolie, Bruch), normaler Verschleiß (z.B. Scherfolie oder Klingenblock) sowie Mängel, die den Wert oder die Gebrauchstauglichkeit des Gerätes nur unerheblich beeinflussen. Bei Eingriffen durch nicht von uns autorisierte Braun Kundendienstpartner sowie bei Verwendung anderer als Original Braun Ersatzteile erlischt die Garantie.

Im Garantiefall senden Sie das Gerät mit Kaufbeleg bitte an einen autorisierten Braun Kundendienstpartner. Die Anschrift für Deutschland können Sie kostenlos unter 00800/27 28 64 63 erfragen.

English

Guarantee

We grant 2 years guarantee on the product commencing on the date of purchase. Within the guarantee period we will eliminate, free of charge, any defects in the appliance resulting from faults in materials or workmanship, either by repairing or replacing the complete appliance as we may choose.

This guarantee extends to every country where this appliance is supplied by Braun or its appointed distributor.

This guarantee does not cover: damage due to improper use, normal wear and tear (e.g. shaver foil or cutter block) as well as defects that have a negligible effect on the value or operation of the appliance. The guarantee becomes void if repairs are undertaken by unauthorised persons and if original Braun parts are not used.

To obtain service within the guarantee period, hand in or send the complete appliance with your sales receipt to an authorised Braun Customer Service Centre.

For UK only:

This guarantee in no way affects your rights under statutory law.

Français

Garantie

Nous accordons une garantie de 2 ans sur ce produit, à partir de la date d'achat.

Pendant la durée de la garantie, Braun prendra gratuitement à sa charge la réparation des vices de fabrication ou de matière en se réservant le droit de décider si certaines pièces doivent être