

BRAUN

3470

3270



Silk-épil[®] SoftPerfection

Type 5318

www.braun.com/register

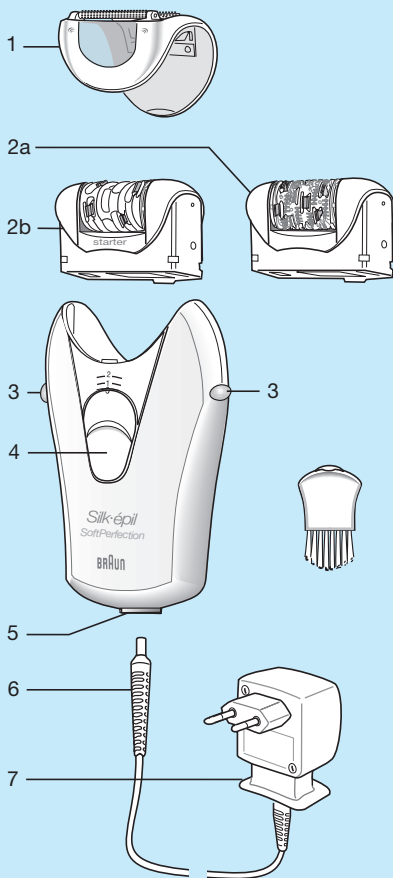
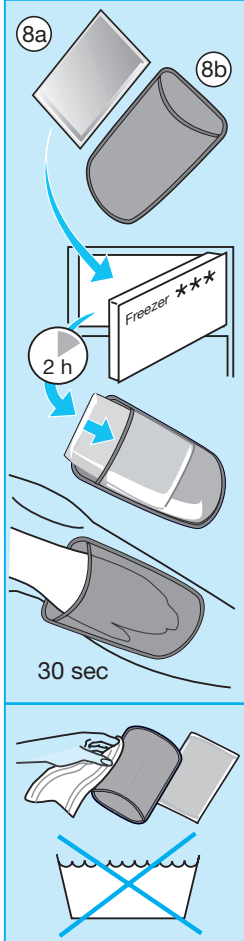
Easy Start



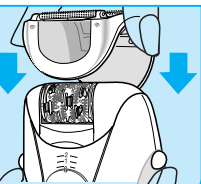
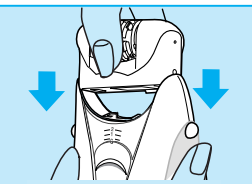
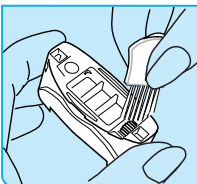
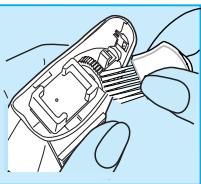
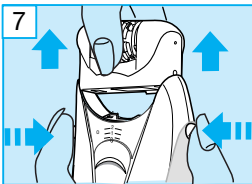
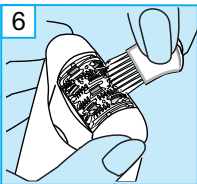
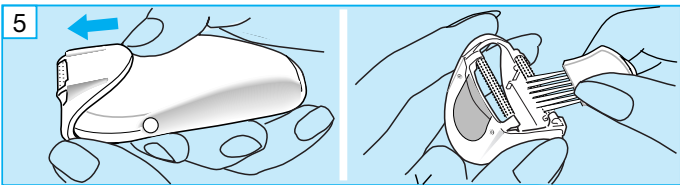
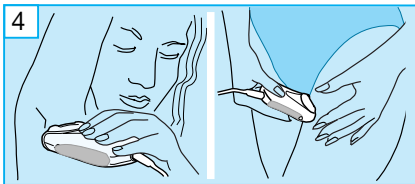
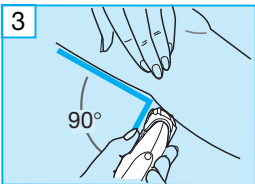
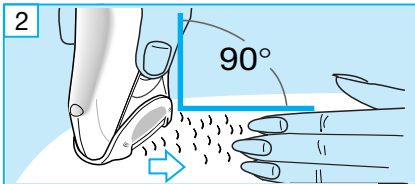
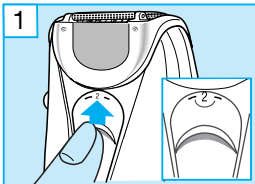
Braun Infoline

Deutsch	6, 97, 106
English	10, 97, 106
Français	14, 97, 106
Español	18, 98, 106
Italiano	22, 98, 106
Nederlands	26, 98, 106
Dansk	30, 99, 106
Norsk	34, 99, 106
Svenska	38, 99, 106
Suomi	42, 100, 106
Polski	46, 100, 106
Český	50, 101, 106
Slovenský	54, 102, 106
Magyar	58, 102, 106
Hrvatski	62, 102, 106
Slovenski	66, 103, 106
Türkçe	70, 106
Русский	74, 103, 106
Українська	78, 104, 106
عربي	89, 83, 106
فارسی	96, 90, 106

- (D)** Haben Sie Fragen zu diesem Produkt?
- (A)** Rufen Sie an (gebührenfrei):
00 800 27 28 64 63
00 800 BRAUNINFOLINE
- (CH)** **08 44 - 88 40 10**
- (E)** Servicio al consumidor para España:
901 11 61 84
- (P)** Serviço ao Consumidor para Portugal:
808 20 00 33
- (I)** Servizio consumatori:
(02) 6 67 86 23
- (NL)** Heeft u vragen over dit product? Bel Braun Consumenten-infolijn:
0 800-445 53 88
- (B)** Vous avez des questions sur ce produit? Appelez Braun Belgique
(02) 711 92 11
- (DK)** Har du spørgsmål om produktet? Så ring
70 15 00 13
- (N)** Spørsmål om dette produktet? Ring
22 63 00 93
- (S)** Frågor om apparaten? Ring Kundservice
020 - 21 33 21
- (FIN)** Onko Sinulla kysyttävää tuotteesta? Soita
0203 77877
- (TR)** Müşteri Hizmetleri Merkezi:
0212 - 473 75 85
- (RUS)** Если у Вас есть вопросы по поводу данного продукта, звоните
(095) 258 62 70

A**B**

C



English

Our products are engineered to meet the highest standards of quality, functionality and design. We hope you thoroughly enjoy using the Braun Silk-épil Soft Perfection Easy Start.

In the following we would like to familiarise you with the appliance and provide some useful information about epilation. Please read the use instructions carefully and thoroughly before using the appliance.

Braun Silk-épil SoftPerfection Easy Start has been designed to make the removal of unwanted hair as efficient, gentle and easy as possible. Its proven epilation system removes your hair at the root, leaving your skin smooth for weeks.

- The high-precision epilation head (2a) with its unique arrangement of tweezers is designed to remove hair efficiently and gently at the root. The innovative SoftLift™ tips provide an extra close epilation for perfectly smooth skin, allowing to remove hairs as short as 0.5 mm and also flat lying hairs. And as the hair that re-grows is fine and soft, there will be no more stubble.
- The 4-way moving pain softener (1) makes the epilation ultra gentle. With its pulsating movement it stimulates and relaxes the skin to offset the pulling sensation.

If you have not used an epilator before, or if you have not epilated for a longer period of time, it may take a short while for your skin to adapt to epilation. The discomfort experienced at first is considerably reduced with repeated use as the number of hair to be removed decreases over time and as the skin adjusts to the process.

The Braun Silk-épil SoftPerfection Easy Start has been specially designed to make your start in epilation easy as it gently helps your skin in the adjustment phase.

- The starter epilation head (2b) has been developed especially for the first few epilations, when skin is not yet used to the process and also for sensitive skin. Compared to the standard epilation head it has fewer tweezers that are further apart, pulling out less hair simultaneously. This makes epilation much gentler and helps your skin adjust to the process, but will take a bit longer than with the standard epilation head.

The cooling application provides additional help to reduce possible skin irritation after epilation and will also leave the skin feeling cool and fresh.

Warning

- Keep the appliance dry.
- Keep the appliance out of the reach of children.
- When switched on, the appliance must never come in contact with hair on your head, eyelashes, ribbons, etc. to prevent any danger of injury as well as to prevent blockage or damage to the appliance.
- Before use, check whether your voltage corresponds to the voltage printed on the transformer. Always use the country-specific 12 V transformer plug supplied with this product.

General information on epilation

Silk-épil is designed to epilate hair on legs, but use tests monitored by dermatologists have revealed that you can also epilate the underarm and the bikini line.

All methods of hair removal at the root can lead to in-growing hair and irritation (e.g. itching, discomfort and reddening of the skin) depending on the condition of the skin and hair.

This is a normal reaction and should quickly disappear, but may be stronger when you are removing hair at the root for the first few times or if you have sensitive skin.

Using the cooling application will help to prevent irritation.

If, after 36 hours, the skin still shows irritation, we recommend that you contact your physician.

In general, the skin reaction and the sensation of pain tend to diminish considerably with the repeated use of Silk-épil.

In some cases inflammation of the skin could occur when bacteria penetrate the skin (e.g. when sliding the appliance over the skin). Thorough cleaning of the epilation head before each use will minimise the risk of infection.

If you have any doubts about using this appliance, please consult your physician. In the following cases, this appliance should only be used after prior consultation with a physician:

- eczema, wounds, inflamed skin reactions such as folliculitis (purulent hair follicles) and varicose veins
- around moles
- reduced immunity of the skin, e.g. diabetes mellitus, during pregnancy, Raynaud's disease
- haemophilia or immune deficiency.

Some useful tips

Epilation is easier and more comfortable when the hair is at the optimum length of 2–5 mm (0.08–0.2 in.). If hairs are longer, we recommend that you shave first and epilate the shorter re-growing hairs after 1 or 2 weeks.

When epilating for the first time, it is advisable to epilate in the evening, so that any possible reddening can disappear

overnight. To relax the skin we recommend applying a moisture cream after epilation.

Fine hair which re-grows might not grow up to the skin surface. The regular use of massage sponges (e.g. after showering) or exfoliation peelings helps to prevent in-growing hair as the gentle scrubbing action removes the upper skin layer and fine hair can get through to the skin surface.

A Description (see page 4)

- ① 4-way moving pain softener
- ②a Standard epilation head
- ②b Starter epilation head with reduced number of tweezers
- ③ Release buttons
- ④ Switch
- ⑤ Socket for cord connector
- ⑥ Cord connector
- ⑦ 12 V transformer plug

Cooling application:

- ⑧a Gel pack
- ⑧b Cooling glove

B Before starting off

Preparing your skin

Your skin must be dry and free from grease or cream.

Optional skin cooling: For the first few epilations or if you have sensitive skin you can use the cooling application, recommended by dermatologists to help reduce possible skin irritation.

- Ensure that the gel pack has been in the deep freezer (***) for at least 2 hours (for convenience you can store the gel pack in the freezer).

- Insert the gel pack underneath the glove's transparent foil. Use only with glove.
- Put transparent (cool) side of the glove on your leg.
- Start cooling for approx. 1/2 minute, longer if needed.
- Epilate the cooled skin area immediately as described in section «C».
- Repeat cooling and epilating until completion.
- While epilating, please ensure your skin is dry.

Important: Apply cooling glove to the same area for no longer than 2 minutes. Keep away from sunlight. Do not use gel pack when damaged. Dispose of in household waste. Do not use if you are hypersensitive, allergic to the cold, or if your skin suffers from sensory disturbances, when suffering from cardiac diseases or arterial circulatory disorders.

Preparing the appliance

- Before starting off, thoroughly clean the epilation head you want to use (2a) or (2b).
- To remove the epilation head, press the release buttons (3) on the left and right and pull it off.
- Click the desired head into place:
 - Choose the starter epilation head (2b) if you are epilating for the first time or if you have very sensitive skin.
 - Once your skin is used to epilation, you may switch to the standard epilation head (2a) which allows a more efficient and faster epilation thanks to its greater number of tweezers.
- Make sure that the 4-way moving pain softener is in place.
- Plug the cord connector (6) into the socket (5) and plug the transformer plug (7) into an electrical outlet.

C How to epilate

- 1 To turn on the appliance, slide switch (4) to setting «2» («2» = normal speed, «1» = reduced speed).
- 2 Rub your skin to lift short hairs. For optimum performance hold the appliance at a right angle (90°) against your skin. Guide it in a slow, continuous movement without pressure against the hair growth, in the direction of the switch. The SoftLift™ tips will make sure that even flat lying hair is lifted and removed thoroughly at the root. As hair can grow in different directions, it may also be helpful to guide the appliance in different directions to achieve optimum results. Both rollers of the 4-way moving pain softener should always be kept in contact with the skin, allowing the pulsating movements to stimulate and relax the skin for a gentler epilation.
- 3 **Leg epilation**
Epilate your legs from the lower leg in an upward direction. When epilating behind the knee, keep the leg stretched out straight.
- 4 **Underarm and bikini line epilation**
Please be aware that especially at the beginning these areas are particularly sensitive to pain. With repeated usage the pain sensation will diminish. For more comfort, ensure that the hair is at the optimum length of 2–5 mm. Before epilating, thoroughly clean the respective area to remove residues (like deodorant). Then carefully dab dry with a towel. When epilating the underarm, keep your arm raised up so that the skin is stretched and guide the appliance in different directions.

As skin may be more sensitive directly after epilation, avoid using irritating substances such as deodorants with alcohol.

Cleaning the epilation heads

- 5 After epilating, unplug the appliance and clean the epilation head used:
First take off the 4-way moving pain softener ① and brush out the rollers.
- 6 To thoroughly clean the tweezer element, use the cleaning brush dipped into alcohol. Turn the product around, hold the brush against the back of the tweezer element and clean the tweezers with the brush while turning the barrel manually.
- 7 Remove the epilation head by pressing the release buttons ③ on the left and right and pull it off.
Give the top of the housing a quick clean with the brush. Place the epilation head and the 4-way moving pain softener back on the housing.

Subject to change without notice.

This product conforms to the EMC-Directive 89/336/EEC and to the Low Voltage Regulation 73/23 EEC.



At the end of the product's useful life, please dispose of it at appropriate collection points provided in your country.

